

RIO GRANDE COUNTY

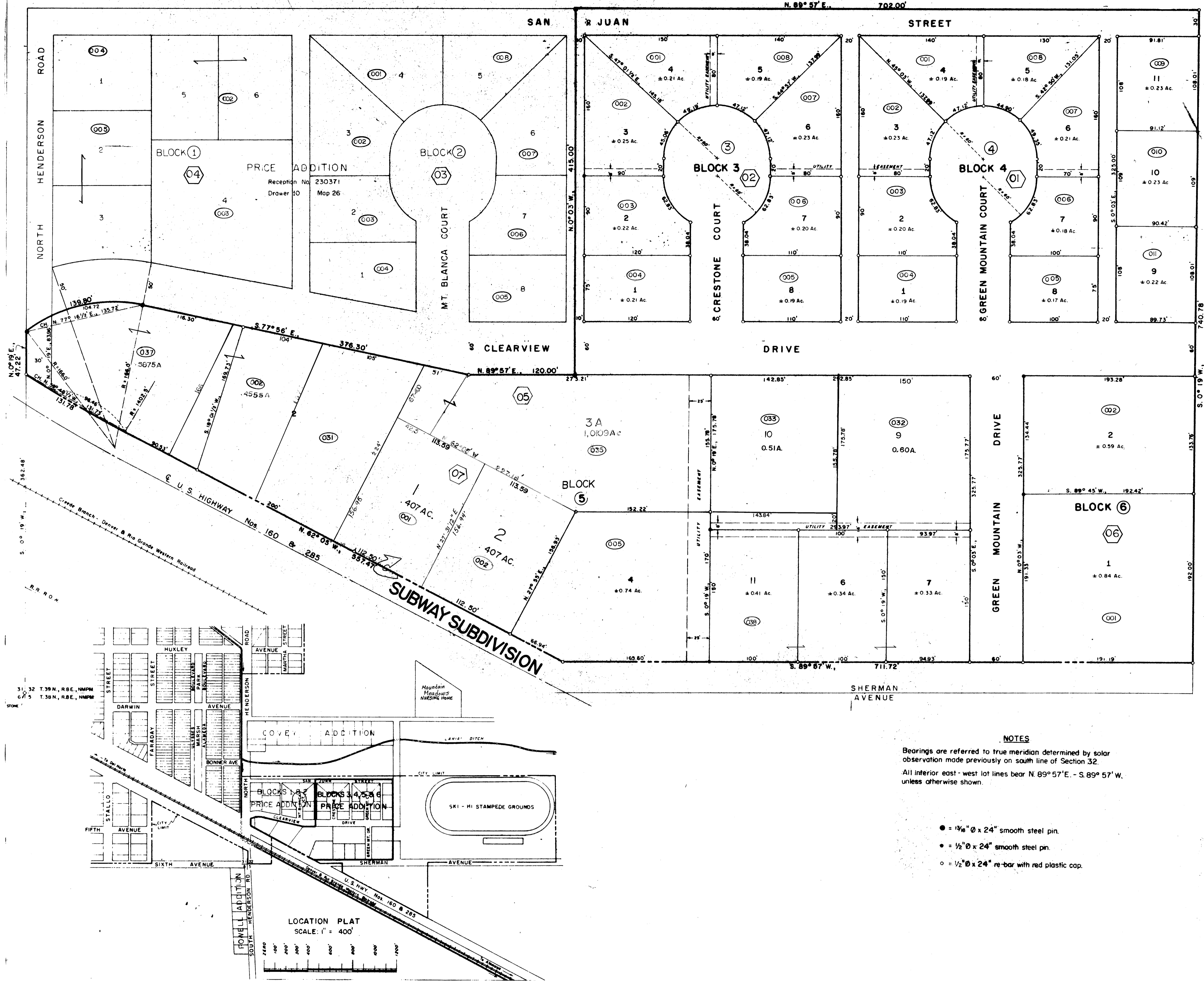
DRAWN BY		DATE	
CHECKED BY		DATE	
REVISED			
Date	By	Remarks	
8-17-76	EB		
9-22-77	EB		
8-2-78	EB		
3-27-79	EA		
1-18-82	EB		
2-8-83	EB		
3-10-88	EB		
8-8-90	DM		
1-12-91	DM		
01-16-92	DM		
1-10-93	DM		

R 3E											R 3E	
09	21	19	17	15	13	11						11
23	35	27	29	31	33	35						35
49	47	45	43	41	39	37						37
51	53	55	57	59	61	63						63

COUNTY INDEX

6	5	4	3	2	1
17	8	9	35B	10	12
18	17	16	15	14	13
20	21	22	23	24	
30	29	28	27	26	25
31	32	33	34	35	36

TOWNSHIP INDEX



NOTES
 Bearings are referred to true meridian determined by solar observation made previously on south line of Section 32.
 All interior east-west lot lines bear N. 89° 57' E. - S. 89° 57' W. unless otherwise shown.

- = 1 3/8" Ø x 24" smooth steel pin.
- = 1/2" Ø x 24" smooth steel pin.
- = 1/2" Ø x 24" re-bar with red plastic cap.

THIS MAP FOR ASSESSMENT PURPOSES ONLY NOT INTENDED TO BE USED FOR LEGAL PURPOSES

35 323
 fr Sec 32 T 39 R 8
PRICE ADDITION
 DR 10 MAP 26
PRICE RESUBDIVISION
 DR 10 MAP 202
SUBWAY SUBDIVISION
 DR 11 MAP 174

