

RIO GRANDE COUNTY

DRAWN BY	A.O.D.	DATE	1972-3
CHECKED BY	C.J.M.	DATE	1972-3
REVISED			
Date	By	Remarks	
3-24-71	CS		
5-7-75	CS		
8-18-76	EB		
8-2-78	EB		
3-27-80	EB		
2-8-83	EB		
2-16-84	EB		
2-9-86	DM		
3-5-88	DA		
1-25-89	DA		
12-19-86	ES		
12-18-87	CL		

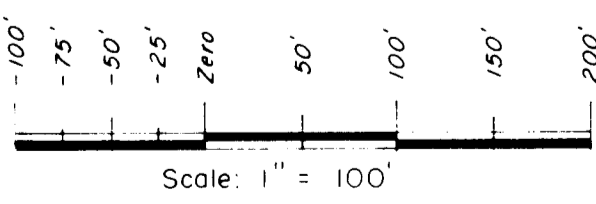
R 3 E		R 8 E	
T 41 N	09	10	11
	21	19	17
	23	27	29
	49	47	43
T 37 N	51	53	55
		59	61
		63	

COUNTY INDEX

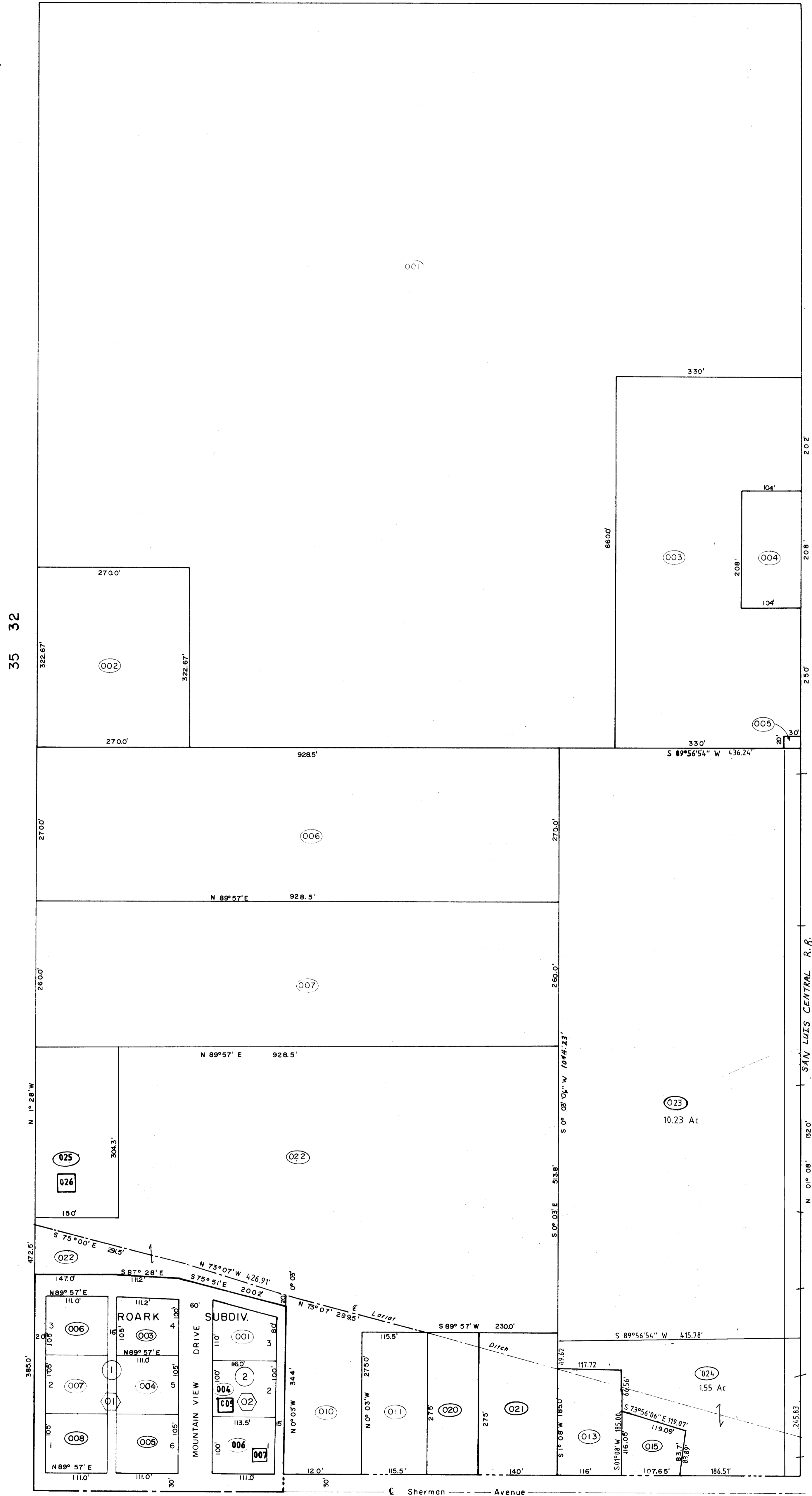
6	5	4	3	2	1
7	8	9	10	11	12
18	17	16	15	14	13
19	20	21	22	23	24
30	29	28	27	26	25
31	32	33	34	35	36

TOWNSHIP INDEX

N



PLANNED DEVELOPMENT SUBDIVISION
P. O. BOX 67 - 47 - 200' WIDE
111.5' ETL (200' R.A.P.) 111.52



(W²SW⁴)

THIS MAP FOR ASSESSMENT
PURPOSES ONLY NOT INTENDED
TO BE USED FOR LEGAL PURPOSES

35 330

W²SW⁴ Sec. 33
T. 39 N., R. 8 E.