

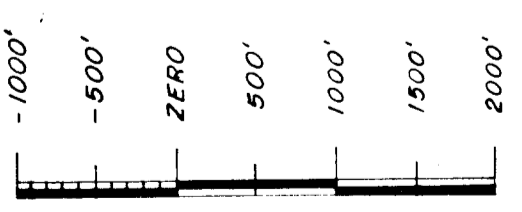
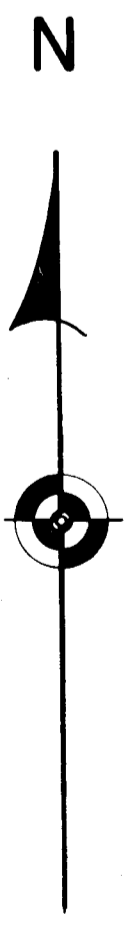
RIO GRANDE COUNTY

DRAWN BY A.O.D. DATE 1972-3
CHECKED BY C.J.M. DATE 1972-3

REVISED			
Date	By	Remarks	
1-25-74	JL	2-2-89 DM	2-5-01 DA
2-7-75	JL	3-3-90 DM	3-5-83 DA
9-22-77	EB	12-21-90 DM	1-10-89 DA
8-2-78	EB	2-4-91 DM	1-24-89 DM
3-27-80	EB	11-04-91 DM	1-19-89 DA
1-22-81	EB	12-30-92 DM	1-14-89 DA
1-18-82	EB	11-13-94 DM	2-3-84 ES
2-10-83	EB	01-13-95 DM	12-18-86 ES
2-18-84	EB	2-9-96 DM	12-18-87 CL
12-28-84	BD	2-10-98 DM	01-03-12 ES
1-14-87	EB	01-13-99 DA	01-03-12 ES
3-10-88	EB	02-28-2000 DA	01-20-14 ES
09-22-14	ES	1-20-18 MS	1-22-20 MS
11-18-15	MS	1-16-19 CF	3-2-22 MS
12-21-22	MS		

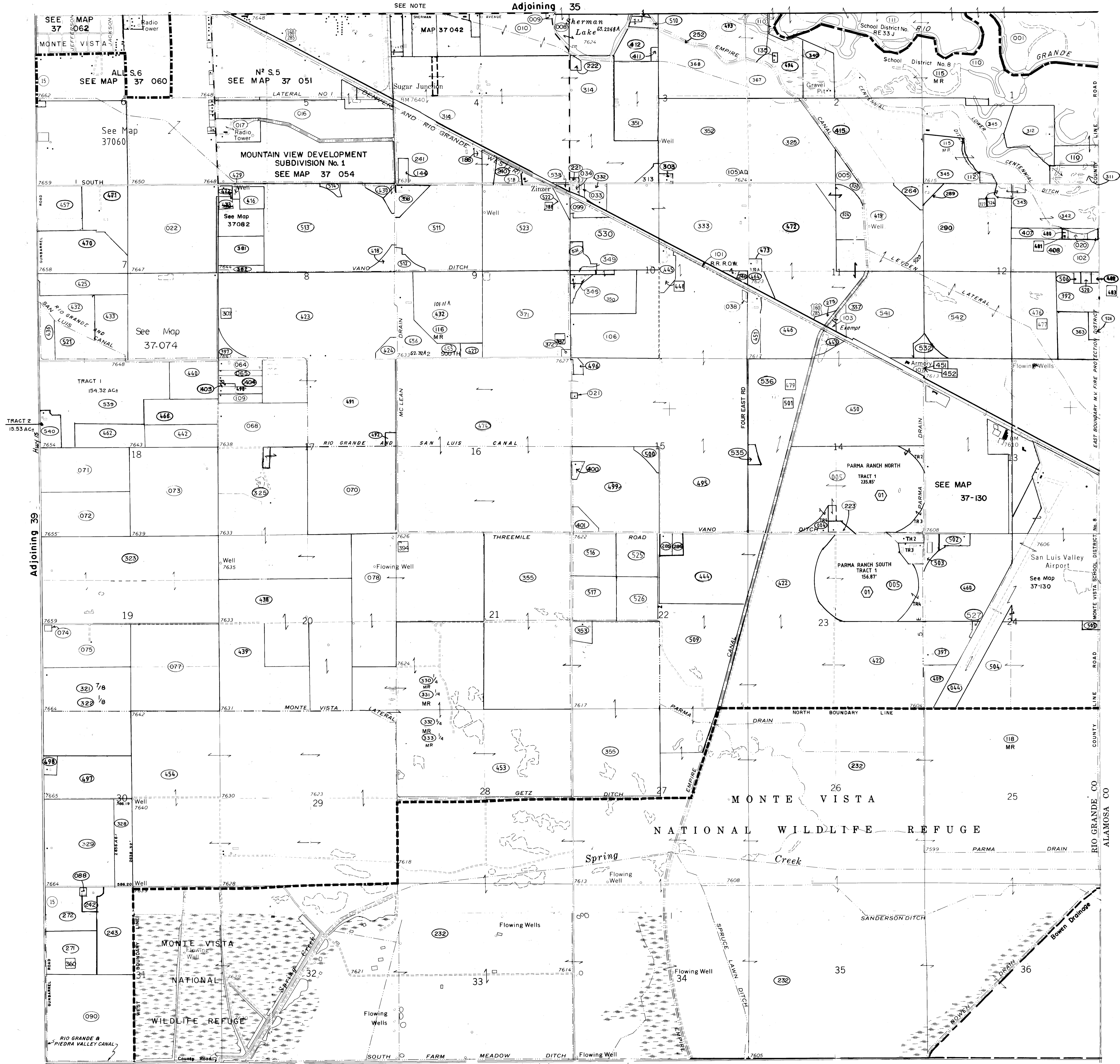
T.37 N.				
09				
21	19	17	15	13
23	27	29	31	33
49	47	45	43	41
51	53	55	57	59
COUNTY INDEX				

33 B											
6	5	4	3	2							1
7	8	9	10	11	12						13
18	17	16	15	14	13					12	
19	20	21	22	23	24				25		
30	29	28	27	26	25			24			
31	32	33	34	35	36						
TOWNSHIP INDEX											



SCALE: 1" = 1200'

DAVIS ENGINEERING SERVICE, INC.
P. O. BOX 67 - 576 SPRUCE ST.
DEL. NORTE, COLORADO 81132



NOTE: IMPROVEMENTS ONLY 154 THRU 176-180-188 THRU 193
ARE INCLUDED ON PARCEL 096 (TRAILER PARK)
ALSO 196 THRU 200 & 202 THRU 215

Adjoining 63

THIS MAP FOR ASSESSMENT PURPOSES ONLY NOT INTENDED TO BE USED FOR LEGAL PURPOSES