

RIO GRANDE COUNTY

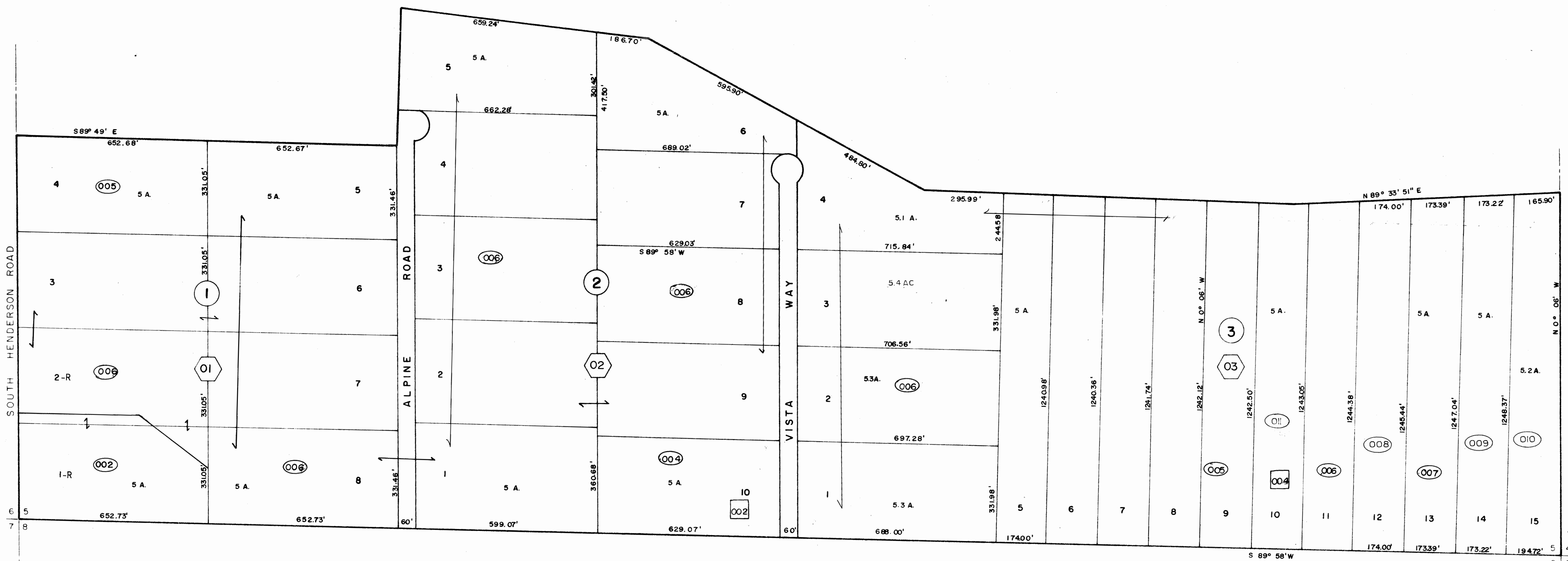
DRAWN BY A.O.D. DATE 1972-3		CHECKED BY C.J.M. DATE 1972-3	
REVISED			
Date	By	Remarks	
9-25-77	TL		
5-7-75	TL		
9-22-77	EB		
3-28-80	EB		
2-16-84	EB		
3-10-88	EB		
8-9-90	DM		
12-1-90	DM		
1-29-92	DM		
12-31-92	DM		
11-14-11	ES		
12-16-11	ES		
1-15-21	MS		

R. 3 E.		R. 8 E.	
T. 37 N.	T. 38 N.	T. 39 N.	T. 40 N.
21	23	25	27
29	31	33	35
43	45	47	49
53	55	57	59
61	63	65	67

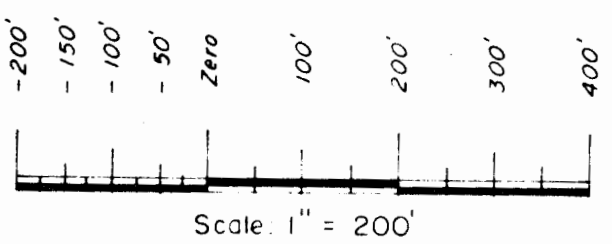
COUNTY INDEX

33 S.		33 S.	
T. 37 N.	T. 38 N.	T. 39 N.	T. 40 N.
6	7	8	9
10	11	12	13
14	15	16	17
18	19	20	21
22	23	24	25
26	27	28	29
30	31	32	33
34	35	36	37

TOWNSHIP INDEX



Description of Mountain View Development Subdivision No. 1:  
 Beginning at the SW corner of Sec. 5, T. 38 N., R. 8 E., N.M.P.M.,  
 thence N. 1° 42' 06" W. along the west line of said Sec. 5, 1322.59 feet  
 to a fence corner; thence N. 89° 49' 24" E. along a fence line  
 1305.37 feet to a fence corner; thence N. 0° 26' 06" W. along a fence  
 line 481.98 feet to a fence corner; thence S. 84° 53' 09" E. along a  
 fence line 853.07 feet to an angle point in the fence; thence  
 S. 63° 05' 06" E. along a fence line 1080.76 feet to an angle point in  
 the fence; thence N. 89° 52' 21" E. along a fence line 1263.90 feet to  
 an angle point in the fence; thence N. 89° 33' 51" E. along a fence line  
 936.60 feet to a point on the east line of said Sec. 5; thence  
 S. 1° 18' 51" E. along said east line of Sec. 5, 1249.64 feet to the SE  
 corner of said Sec. 5; thence S. 89° 58' W. along the south line of said  
 Sec. 5, 5304.93 feet, more or less, to the Point of Beginning, containing  
 approximately 169.557 acres, more or less, and 33 sites within 3 blocks.  
 For more detail see plat on file in the office of the County Clerk  
 and Recorder.



THIS MAP FOR ASSESSMENT  
 PURPOSES ONLY NOT INTENDED  
 TO BE USED FOR LEGAL PURPOSES

37 054

MOUNTAIN VIEW DEVELOPMENT  
 SUBDIVISION No. 1  
 S<sup>2</sup> Section 5  
 T. 38 N., R. 8 E.

DAVIS ENGINEERING SERVICE, INC.  
 P. O. BOX 67 - 576 SPRUCE ST.  
 DEL NORTE, COLORADO 81132