

NORTH VALLEY SITES,  
SOUTH HILL SITES,  
BUDMAR MEADOWS  
Fractions of Tract 38  
T. 38 N., R. 4 1/2 E.

# RIO GRANDE COUNTY

DRAWN BY *AOD* DATE 1972-3  
 CHECKED BY *CJM* DATE 1972-3  
 REVISED

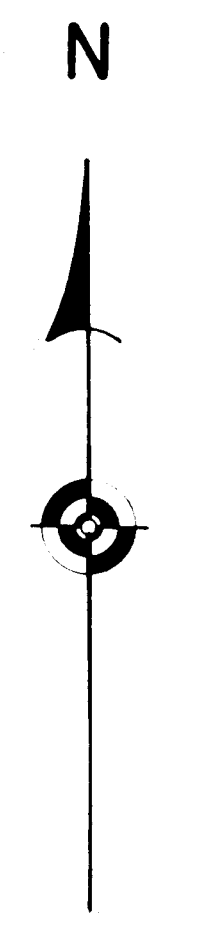
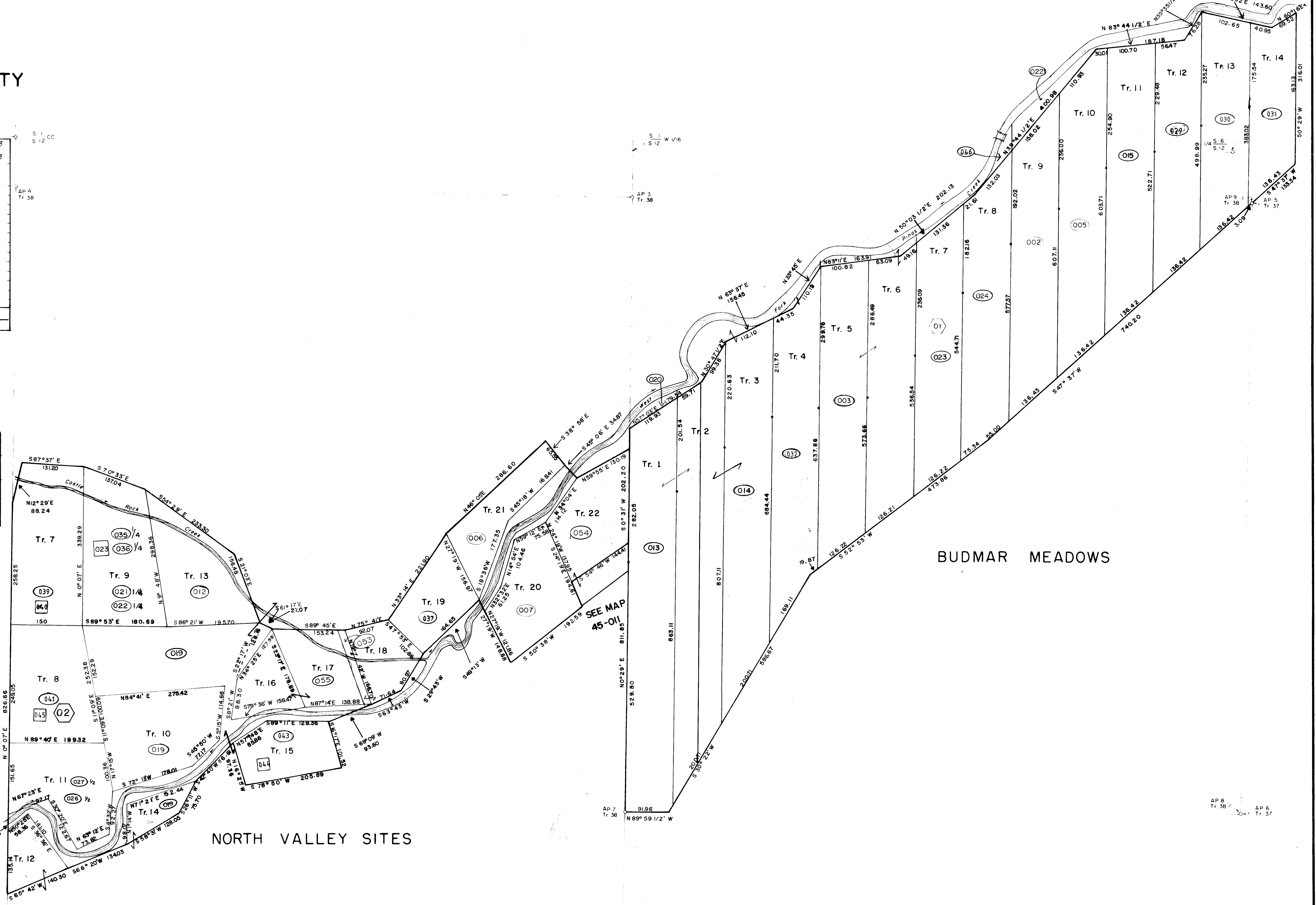
Date	By	Remarks
1-25-74	JL	1-14-94 DM
7-7-76	FL	1-23-96 DM
9-12-76	EB	2-24-97 DM
9-23-77	EB	2-10-98 DM
8-2-78	EB	01-22-99 DA
3-31-80	EB	2-7-01 DA
1-22-81	EB	3-7-02 DM
1-19-82	EB	12-19-05 ES
1-31-83	EB	01-2014 ES
3-22-88	EB	01-2014 ES
2-26-89	DM	11-17-16 MS
8-14-90	DM	1-16-19 CF
11-08-91	DM	5-2-22 MS
12-27-22	MS	

09	10	11	12	13	14
21	19	17	15	13	11
23	22	21	20	19	18
49	47	45	43	41	39
51	53	55	57	59	61

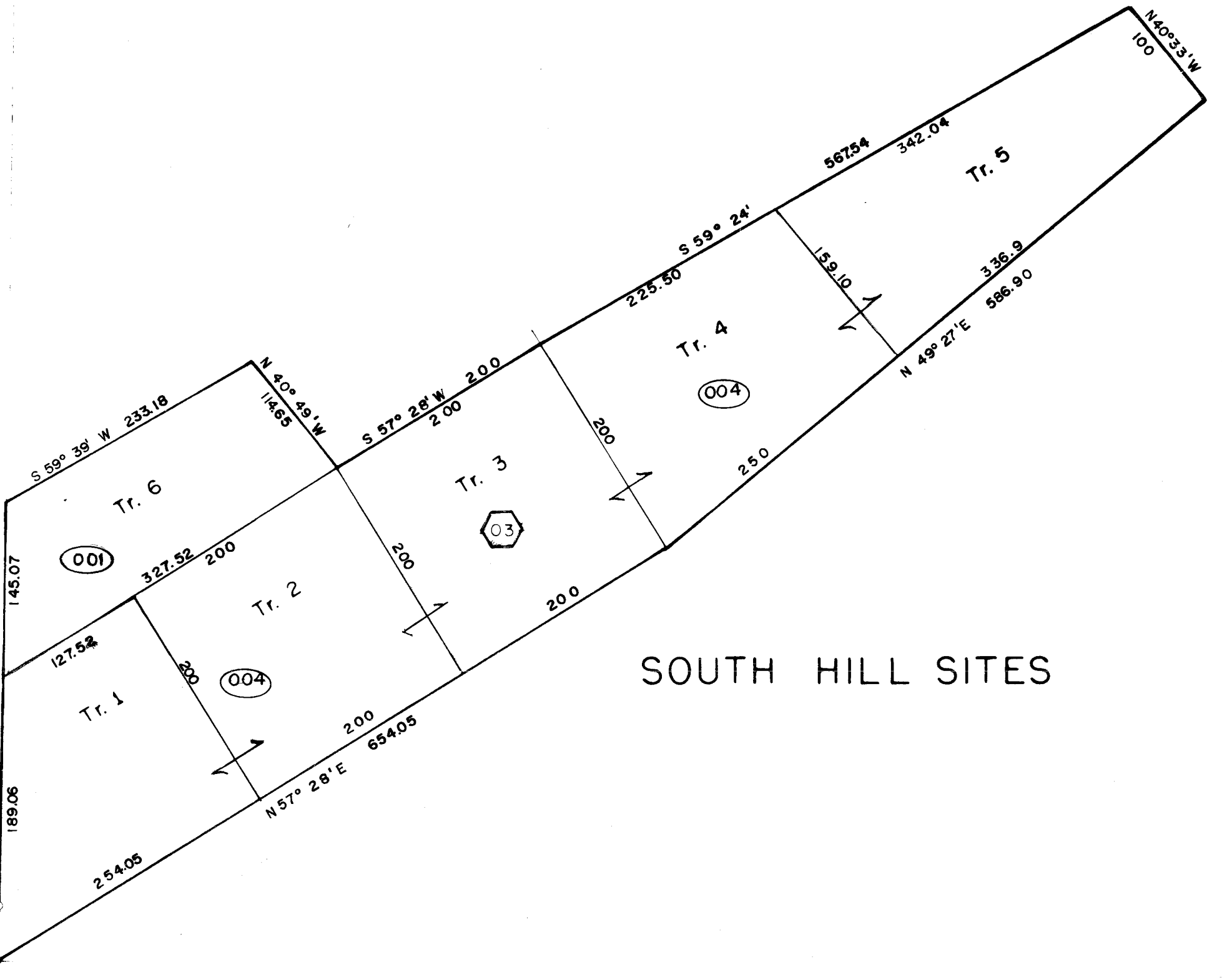
COUNTY INDEX

6	5	4	3	2	1
7	8	9	10	11	12
18	17	16	15	14	13
19	20	21	22	23	24
30	29	28	27	26	25
31	32	33	34	35	36

TOWNSHIP INDEX



Portion of O18  
 SEE TWN MAP



Scale 1" = 100'

For more detail see recorded plats in the office of the County Clerk & Recorder

NORTH VALLEY SITES  
 SOUTH HILL SITES  
 BUDMAR MEADOWS  
 Fractions of Tract 38  
 T. 38 N., R. 4 1/2 E.

THIS MAP FOR ASSESSMENT  
 PURPOSES ONLY NOT INTENDED  
 TO BE USED FOR LEGAL PURPOSES