

RIO GRANDE COUNTY

DRAWN BY A.O.D. DATE 1972-3
CHECKED BY C.J.M. DATE 1972-3

Date	By	Remarks
9-25-77	JL	12-18-07 ES
7-7-77	TL	09-23-14 ES
8-3-78	EB	1-18 MS
3-31-80	EB	3-2-22 MS
2-10-83	EB	
1-15-87	EB	
1-13-93	DM	
1-23-95	DM	
2-24-97	DM	
2-27-99	DM	
1-10-99	DM	
3-11-94	DM	
12-19-86	ES	

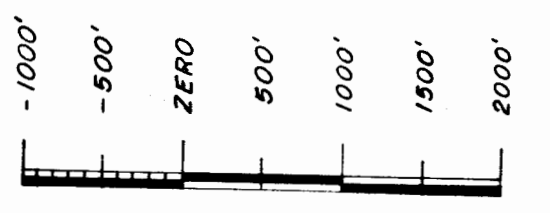
T.37 N.		R.3 E.	
09	10	11	12
13	14	15	16
17	18	19	20
21	22	23	24
25	26	27	28
29	30	31	32
33	34	35	36
37	38	39	40
41	42	43	44
45	46	47	48
49	50	51	52
53	54	55	56
57	58	59	60
61	62	63	64

COUNTY INDEX

6	5	4	3	2	1
7	8	9	10	11	12
13	14	15	16	17	18
19	20	21	22	23	24
25	26	27	28	29	30
31	32	33	34	35	36

TOWNSHIP INDEX

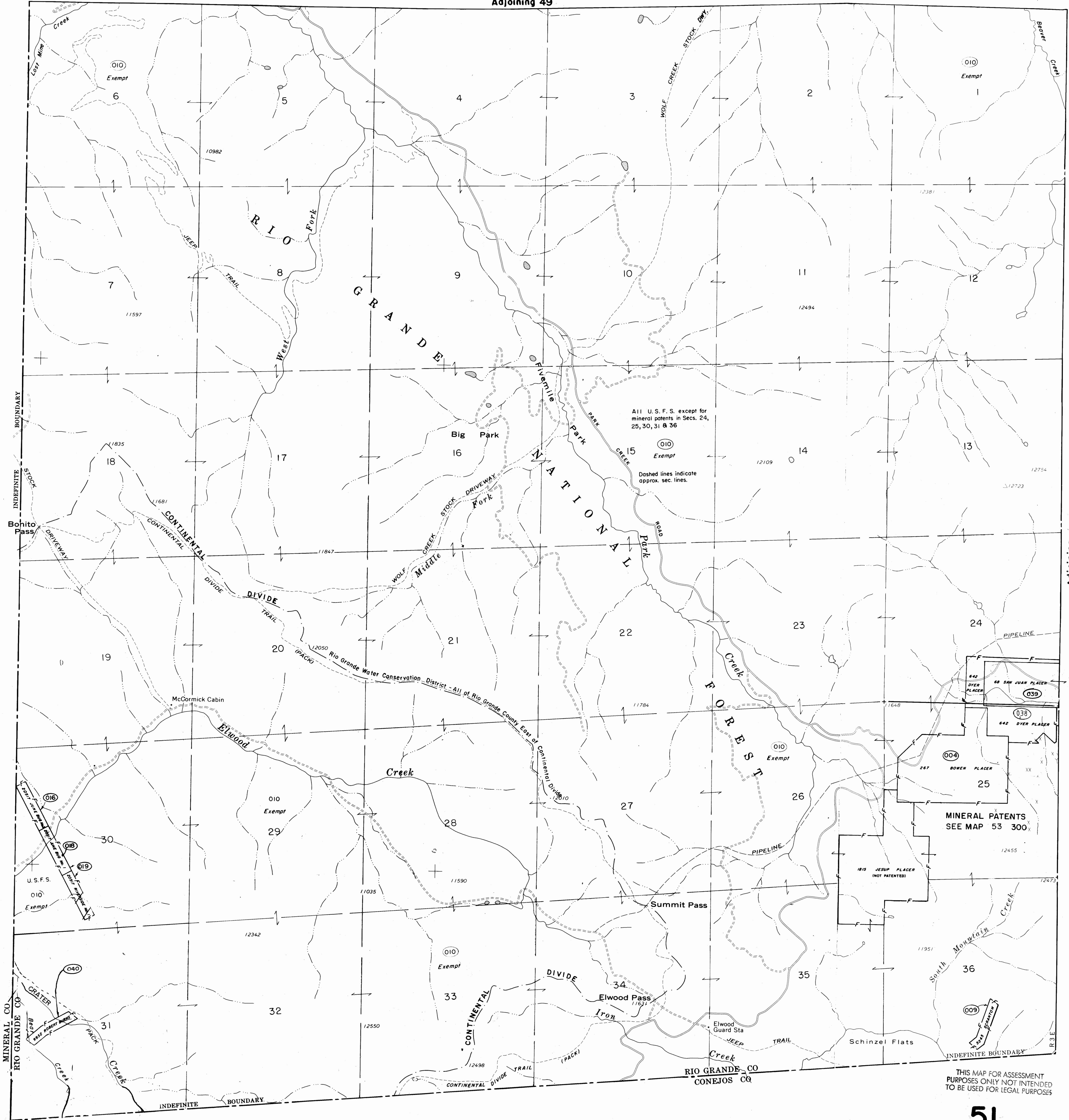
N



SCALE: 1" = 1200'

DAVIS ENGINEERING SERVICE, INC.
P. O. BOX 67 - 576 SPRUCE ST.
DEL NORTE, COLORADO 81132

Adjoining 49



All U.S.F.S. except for mineral patents in Secs. 24, 25, 30, 31 & 36
Dashed lines indicate approx. sec. lines.

MINERAL PATENTS
SEE MAP 53 300

THIS MAP FOR ASSESSMENT PURPOSES ONLY NOT INTENDED TO BE USED FOR LEGAL PURPOSES

51

T.37 N., R.3 E.

Adjoining 53

FROM 53 - 193
OO 032