

15 280  
SW Sec. 28  
T. 40N., R. 6E.

# RIO GRANDE COUNTY

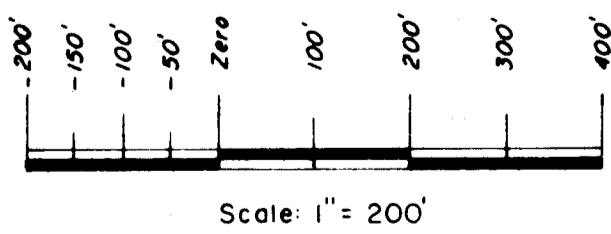
DRAWN BY <i>A.O.D.</i> DATE 1972-3		
CHECKED BY <i>C.J.M.</i> DATE 1972-3		
REVISED		
Date	By	Remarks
7-18-74	JL	
7-27-76	EB	
3-4-80	EB	

R 3 E							
T 40 N	09			R 6 E			
	21	19	17	15	13	11	
	23	25	27	29	31	33	35
	49	47	45	43	41	39	37
T 37 N	51	53	55	57	59	61	63

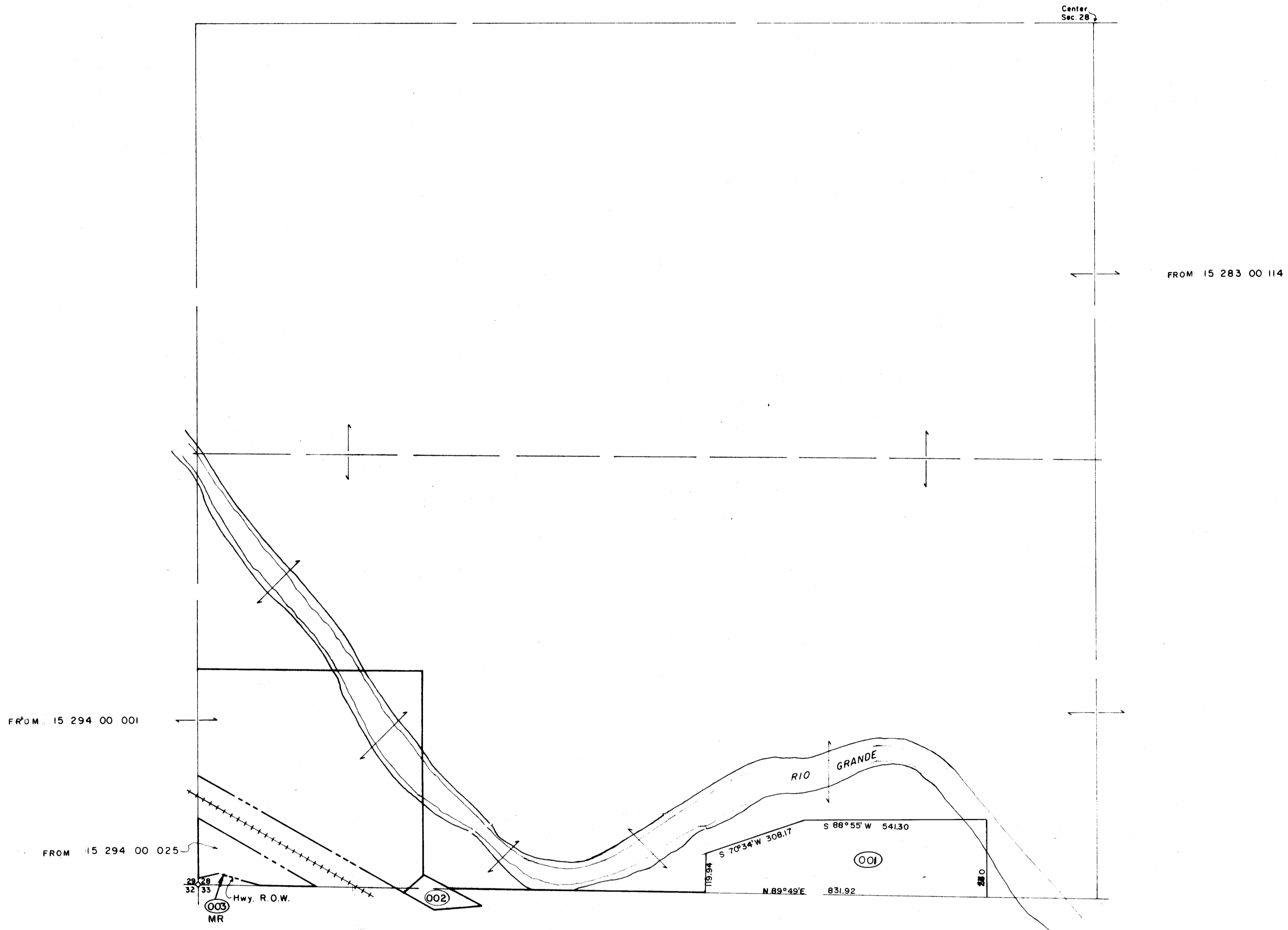
COUNTY INDEX

6	5	4	3	2	1
7	8	9	10	11	12
18	17	16	15	14	13
19	20	21	22	23	24
30	29	28	27	26	25
31	32	33	34	35	36

TOWNSHIP INDEX



DAVIS ENGINEERING SERVICE, INC.  
P. O. BOX 67 - 576 SPRUCE ST.  
DEL NORTE, COLORADO 81132



THIS MAP FOR ASSESSMENT PURPOSES ONLY NOT INTENDED TO BE USED FOR LEGAL PURPOSES

15 280  
SW<sup>4</sup> Section 28  
T. 40N., R. 6 E.