

15 294
 S²SE⁴ & SE⁴SW⁴ Sec. 29
 LA MESA SUBDIVISION
 VOSS DEVELOPMENT
 T. 40 N., R. 6 E.

RIO GRANDE COUNTY

DRAWN BY AOD DATE 1972-3
 CHECKED BY CJM DATE 1972-3

REVISED

Date	By	Remarks
7-14-77	JL	DM 7-12-90 02-11-02 04
10-3-75	EB	12-20-90 DM 1-14-04 DA
7-24-76	EB	2-4-91 DM 12-12-06 JM
9-7-77	EB	10-21-91 DM 12-29-09 ES
7-28-78	EB	12-16-92 DM 12-09-11 ES
3-4-80	EB	12-30-93 DM 11-07-12 ES
1-13-81	EB	1-19-94 DM 12-19-13 ES
1-6-82	EB	1-24-94 UPDMS 11-10-16 MS
1-12-83	EB	12-20-94 DM 1-3-04 CF
1-19-84	EB	12-22-95 DM 1-7-21 MS
12-10-84	EB	D21397 DM 2-1-22 MS
12-18-86	EB	D21197 DM 12-20-22 MS
1-14-88	EB	12-28-98 WM

COUNTY INDEX

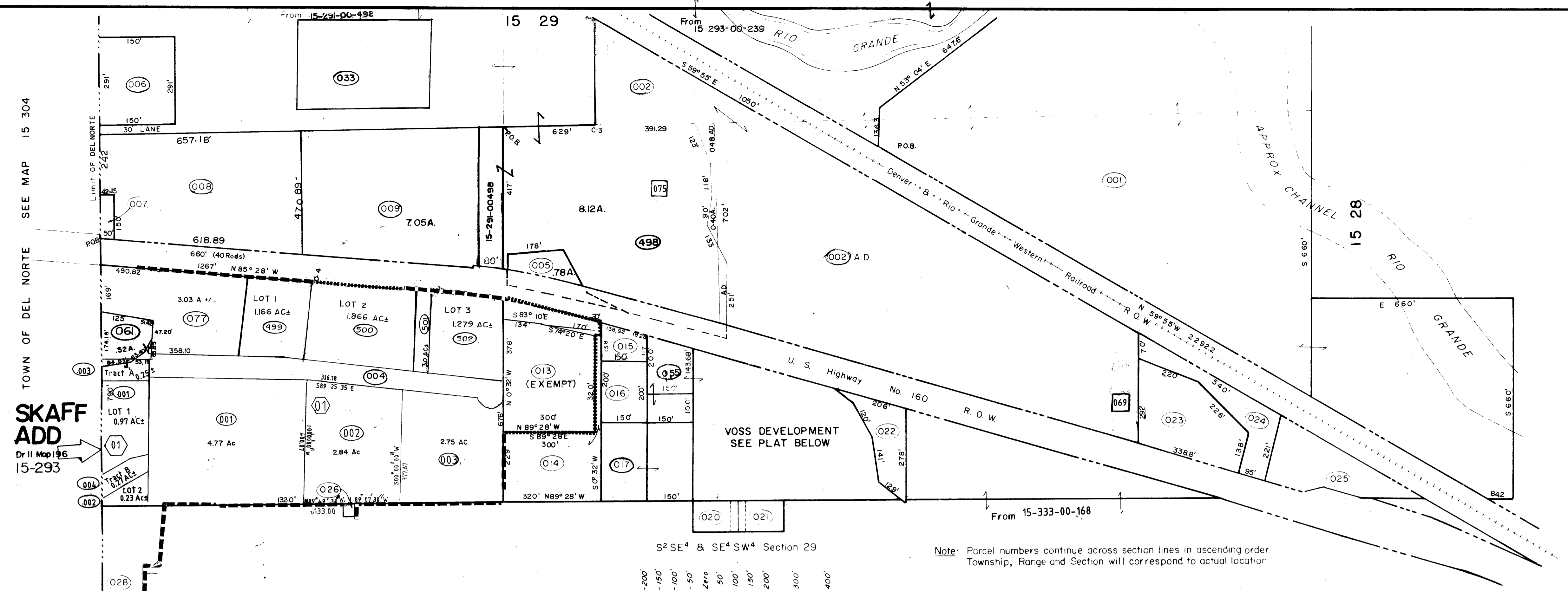
09	11
21	17
19	15
27	23
25	31
33	35
49	43
47	41
53	59
51	61
55	63

TOWNSHIP INDEX

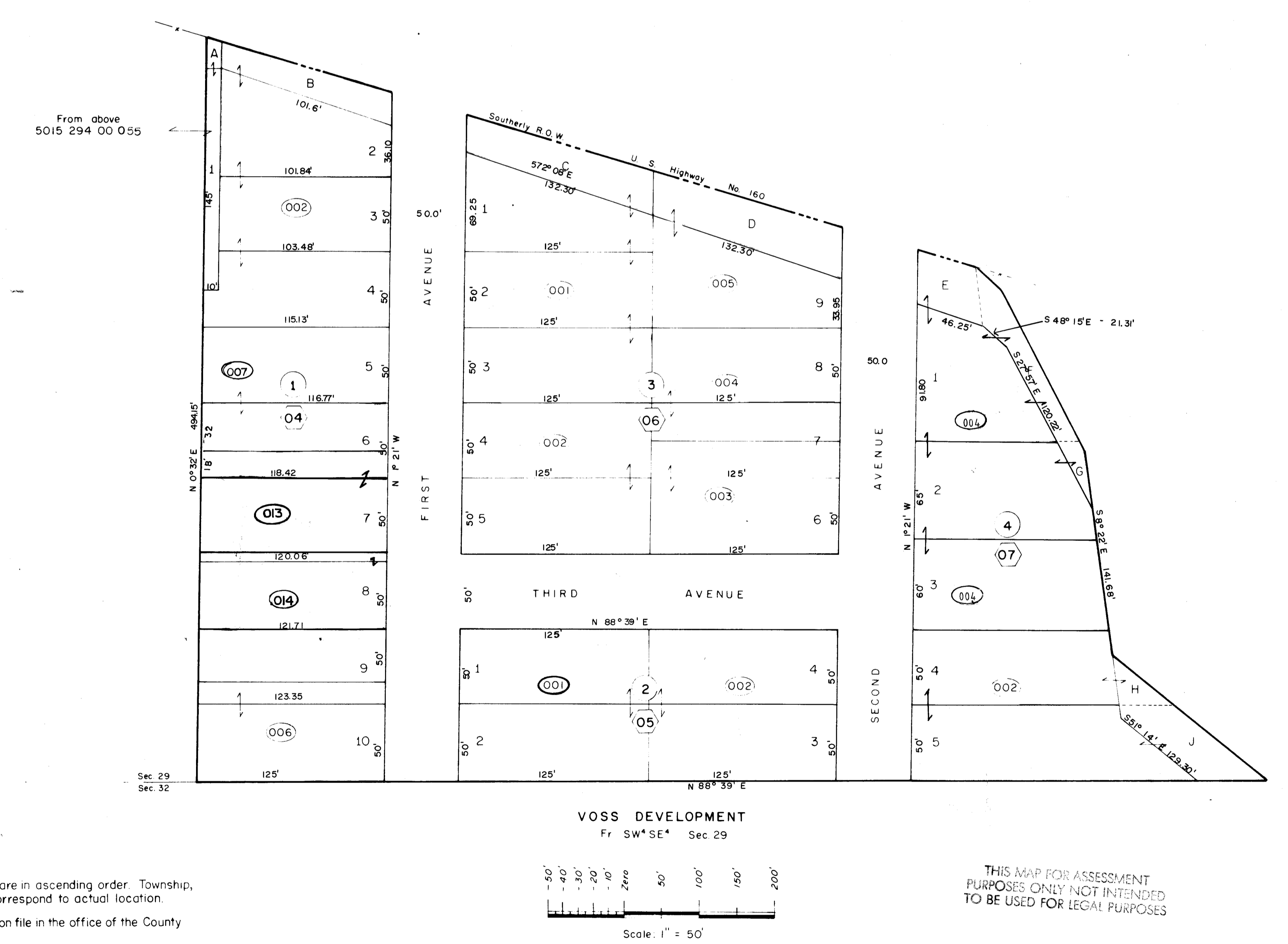
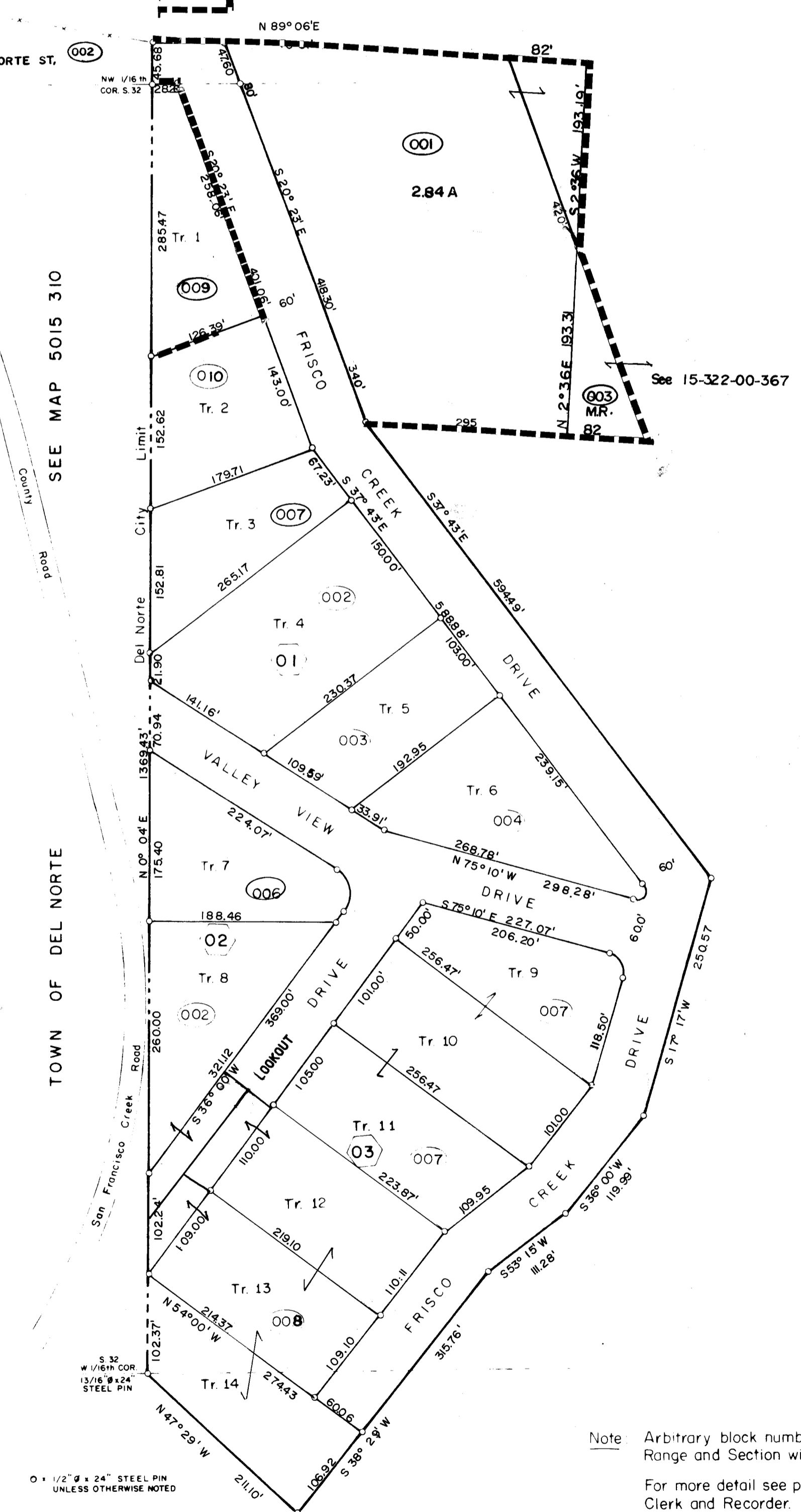
6	5	4	3	2	1
7	8	9	10	11	12
18	17	16	15	14	13
19	20	21	22	23	24
30	29	28	27	26	25
31	32	33	34	35	36



Scales as noted



Dr II Map 196
 15-293



Note: Arbitrary block numbers are in ascending order. Township, Range and Section will correspond to actual location.
 For more detail see plats on file in the office of the County Clerk and Recorder.

THIS MAP FOR ASSESSMENT PURPOSES ONLY NOT INTENDED TO BE USED FOR LEGAL PURPOSES

DAVIS ENGINEERING SURVEYORS
 P. O. BOX 67 - 576 SPRING VALLEY, N.M.

15 294
 S²SE⁴ & SE⁴SW⁴ Sec. 29
 LA MESA SUBDIVISION
 VOSS DEVELOPMENT
 T. 40 N., R. 6 E.