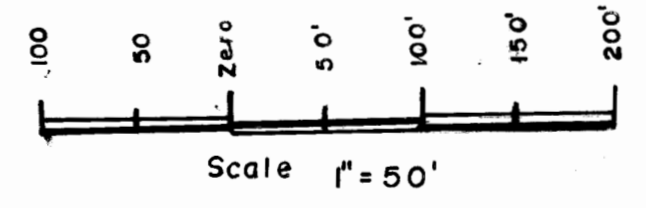
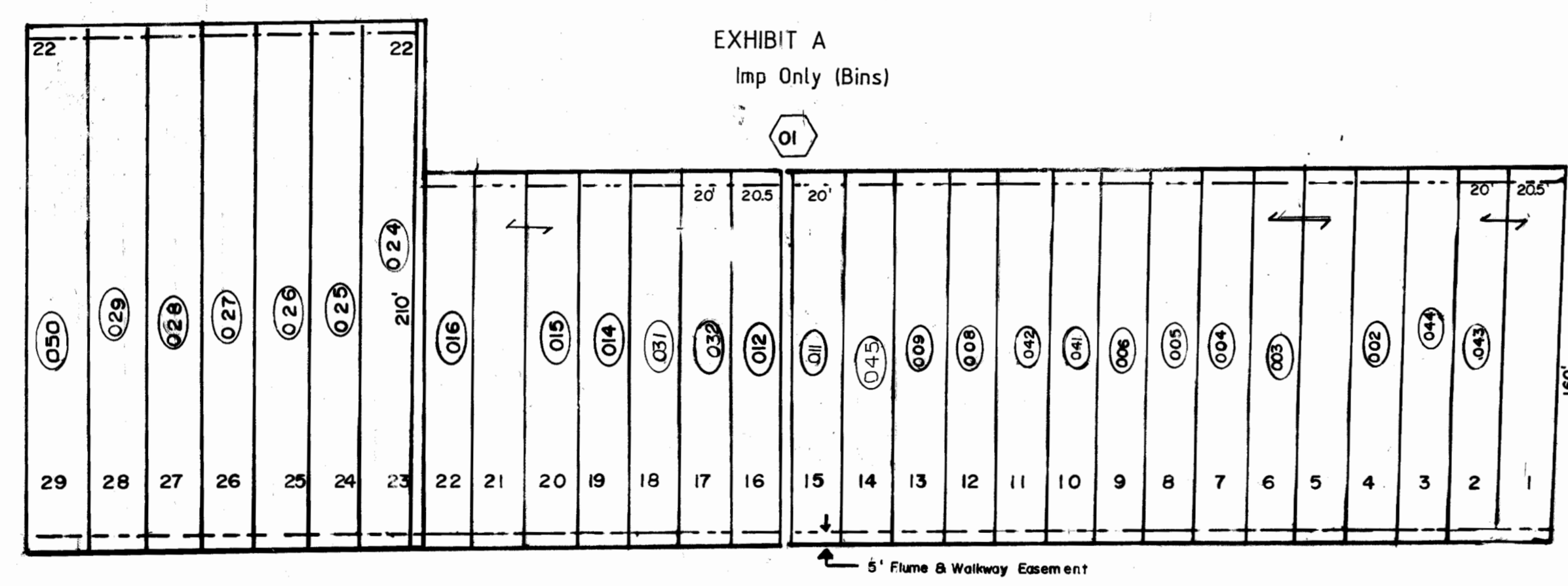
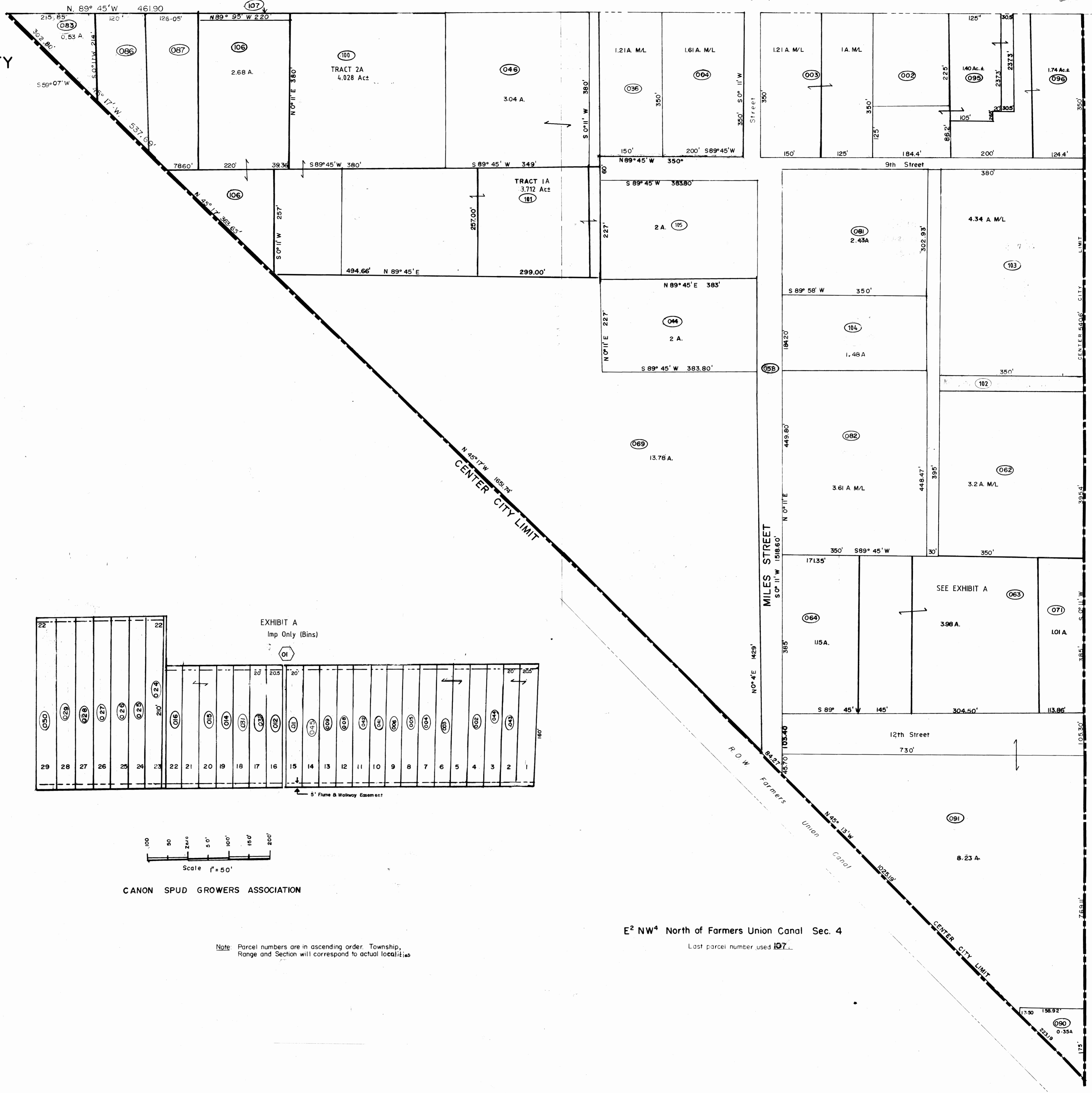
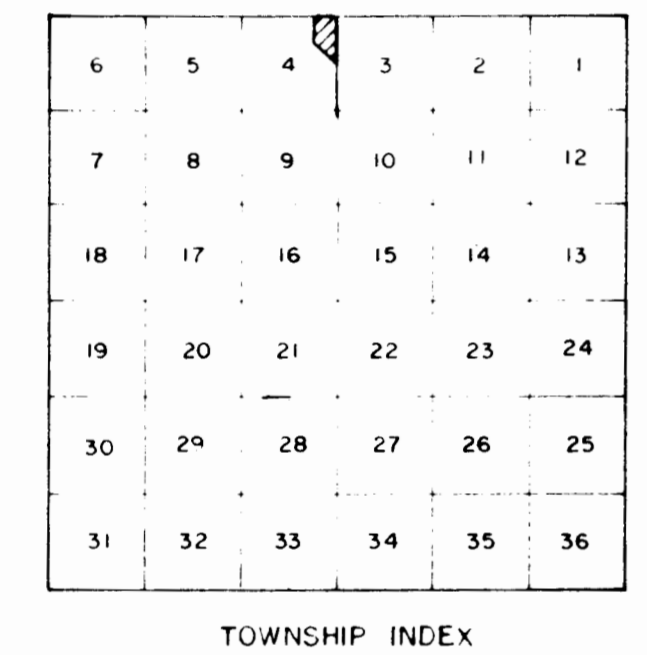
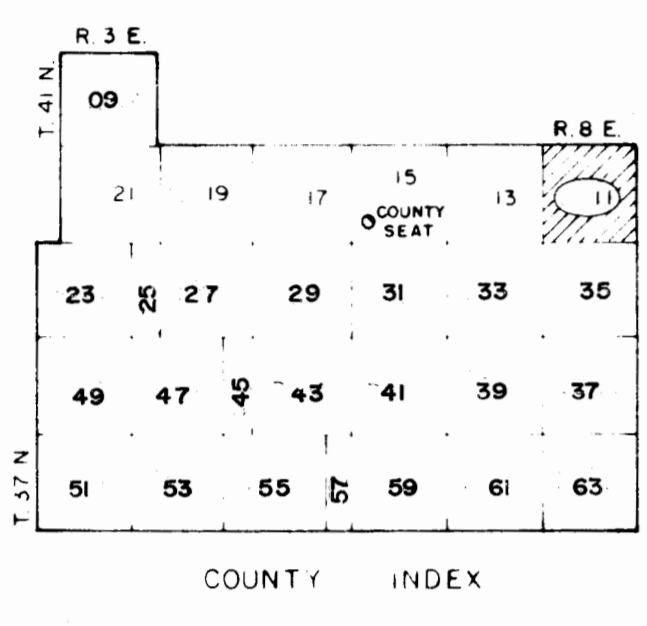


RIO GRANDE COUNTY

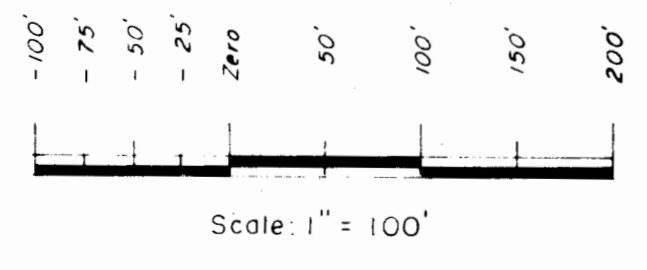
DRAWN BY A.O.D. DATE 1972-3
CHECKED BY C.J.M. DATE 1972-3
REVISED

Date	By	Remarks
7-27-74	JL	12-16-86 EB
9-12-75	EB	7-10-90 DM
7-27-76	EB	12-29-10 ES
9-6-77	EB	11-29-11 ES
7-25-78	EB	11-06-12 ES
3-3-80	EB	11-10-16 MS
1-12-81	EB	1-2-19 cf
1-5-82	EB	12-14-92 DM
8-3-82	EB	12-20-93 DM
1-19-83	EB	1-21-95 DM
1-12-84	EB	02-13-97 DM
12-5-84	EB	12-14-98 WM
12-1-85	EB	2-11-02 DA
12-5-84	EB	01-21-04 DA
12-1-85	EB	1-13-06 E.S.



CANON SPUD GROWERS ASSOCIATION

Note: Parcel numbers are in ascending order. Township, Range and Section will correspond to actual locality.



E² NW⁴ North of Farmers Union Canal Sec. 4
Last parcel number used 107.

DAVIS ENGINEERING SERVICE, INC.
P. O. BOX 67 - 576 SPRUCE ST.
DEL NORTE, COLORADO 81132

THIS MAP FOR ASSESSMENT PURPOSES ONLY NOT INTENDED TO BE USED FOR LEGAL PURPOSES

11 040

E² NW⁴ North of Farmers Union Canal Sec. 4

T. 40 N., R. 8 E.