

17-330

Sections 4 and 5 T. 39 N., R. 5 E.  
Sections 32, 33, and 34 T. 40 N., R. 5 E.

Dr. 11 Map 154

RIO GRANDE COUNTY

DRAWN BY	L.G.C.	DATE	2-13-02
CHECKED BY		DATE	
REVISED			
Date	By	Remarks	

R. 3 E.				
9	10	11	12	13
14	15	16	17	18
19	20	21	22	23
24	25	26	27	28
29	30	31	32	33
34	35	36	37	38
39	40	41	42	43
44	45	46	47	48
49	50	51	52	53
54	55	56	57	58
59	60	61	62	63
R. 6 E.				

COUNTY INDEX

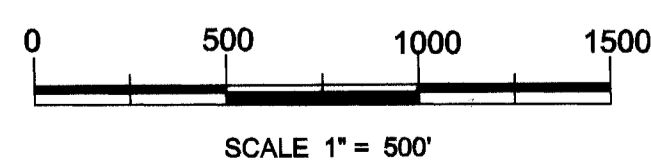
6	5	4	3	2	1
7	8	9	10	11	12
13	14	15	16	17	18
19	20	21	22	23	24
25	26	27	28	29	30
31	32	33	34	35	36

TOWNSHIP INDEX

NOTICE

THIS MAP IS FOR ASSESSMENT PURPOSES ONLY. IT IS NOT NECESSARILY ACCURATE BY SURVEYING STANDARDS. DO NOT USE FOR LEGAL CONVEYANCE.

N



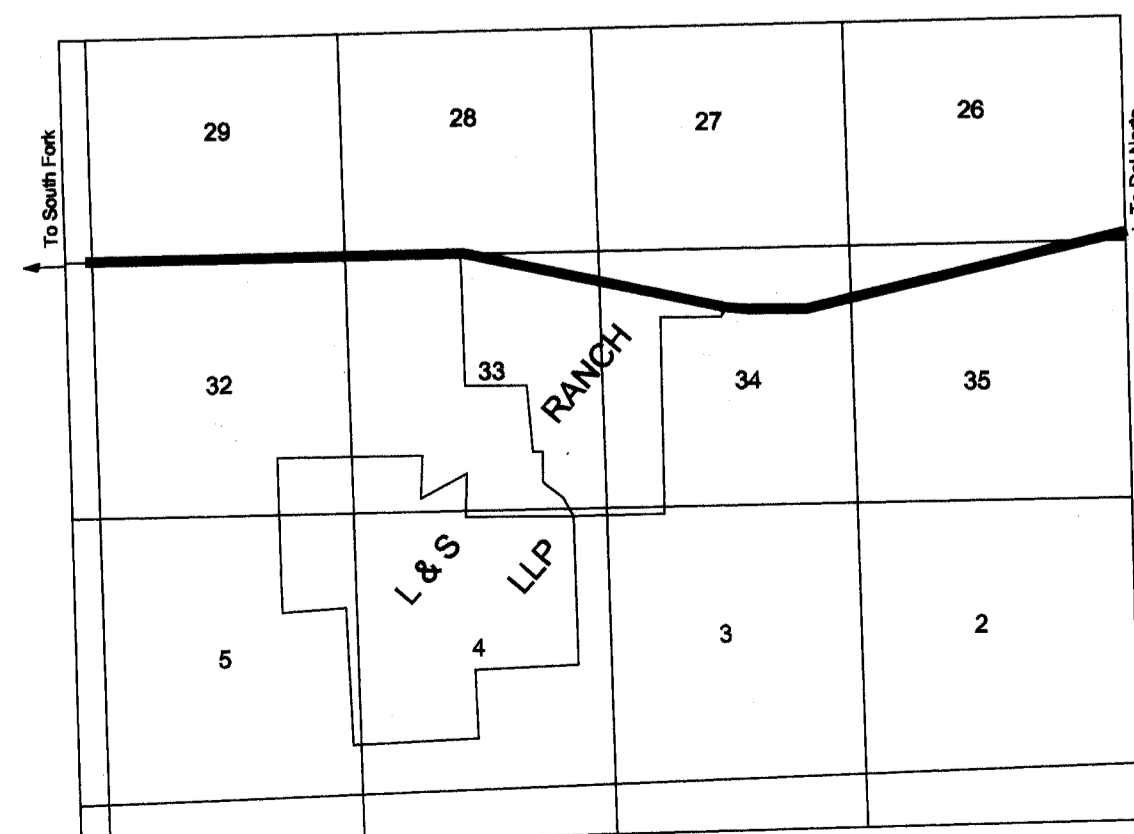
SCALE 1" = 500'

Assessor's Plat By:  
San Luis Valley GIS/GPS Authority  
P.O. Box 300  
Alamosa, Colorado 81101  
719-589-6089



LEGEND

- △ = Stone monument
- ◇ = 3/4" aluminum capped monument, RLS 5442
- ⊙ = 2" aluminum capped monument, RLS 5442
- = 1/2" x 24" rebar w/red plastic cap, RLS 5442
- = 1/2" smooth steel pin w/red plastic cap, ROS 5442
- ⊠ = Highway right of way marked, brass disk set in concrete
- w.c. = Witness corner
- x-x-x- = Fence line
- p-p- = Overhead power or power transmission lines
- - - = Irrigation or drain ditch



SCALE 1" = 4000'

DIVISION OF L & S RANCH LLP  
17-330

Sections 4 and 5 T. 39 N., R. 5 E.  
Sections 32, 33, and 34 T. 40 N., R. 5 E.  
Dr. 11 Map 154