

19204-02
River Island Ranch,
Filing No. 2
Dr 11 Map 220

RIO GRANDE COUNTY

DRAWN BY	A.W.M.	DATE	3/14/2008
CHECKED BY		DATE	
REVISED			
Date	By	Remarks	

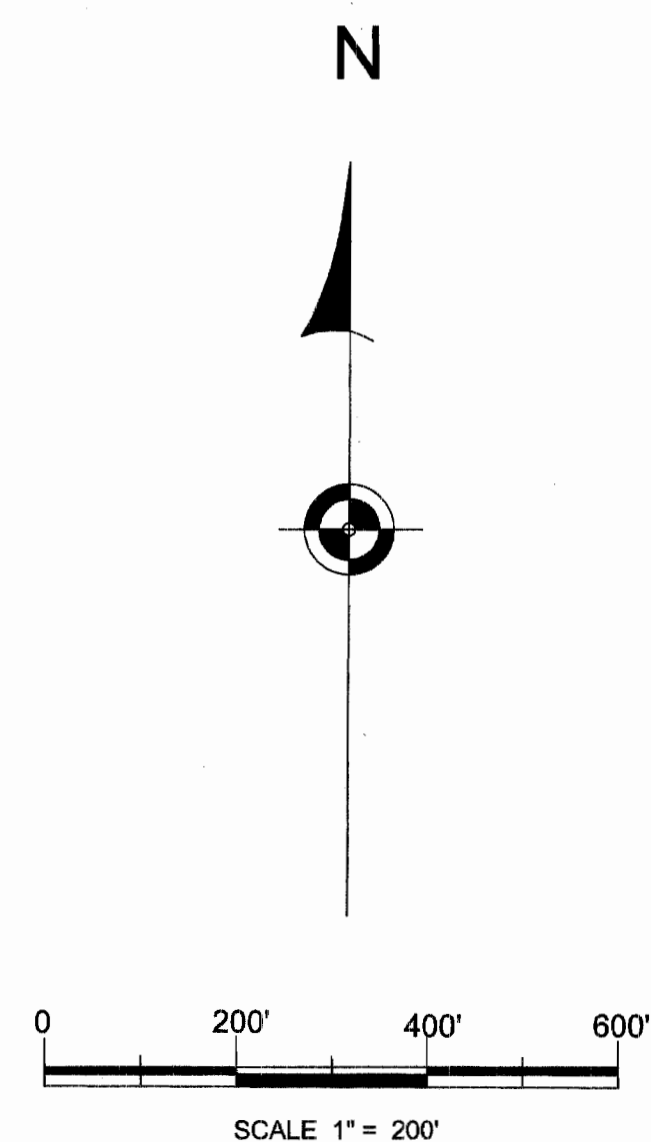
9	10	17	15	13	11
21	27	29	31	33	35
23	27	29	31	33	35
49	47	45	43	41	39
51	53	55	57	59	61

COUNTY INDEX

6	5	4	3	2	1
7	8	9	10	11	12
18	17	16	15	14	13
19	20	21	22	23	24
30	29	28	27	26	25
31	32	33	34	35	36

TOWNSHIP INDEX
 NOTICE

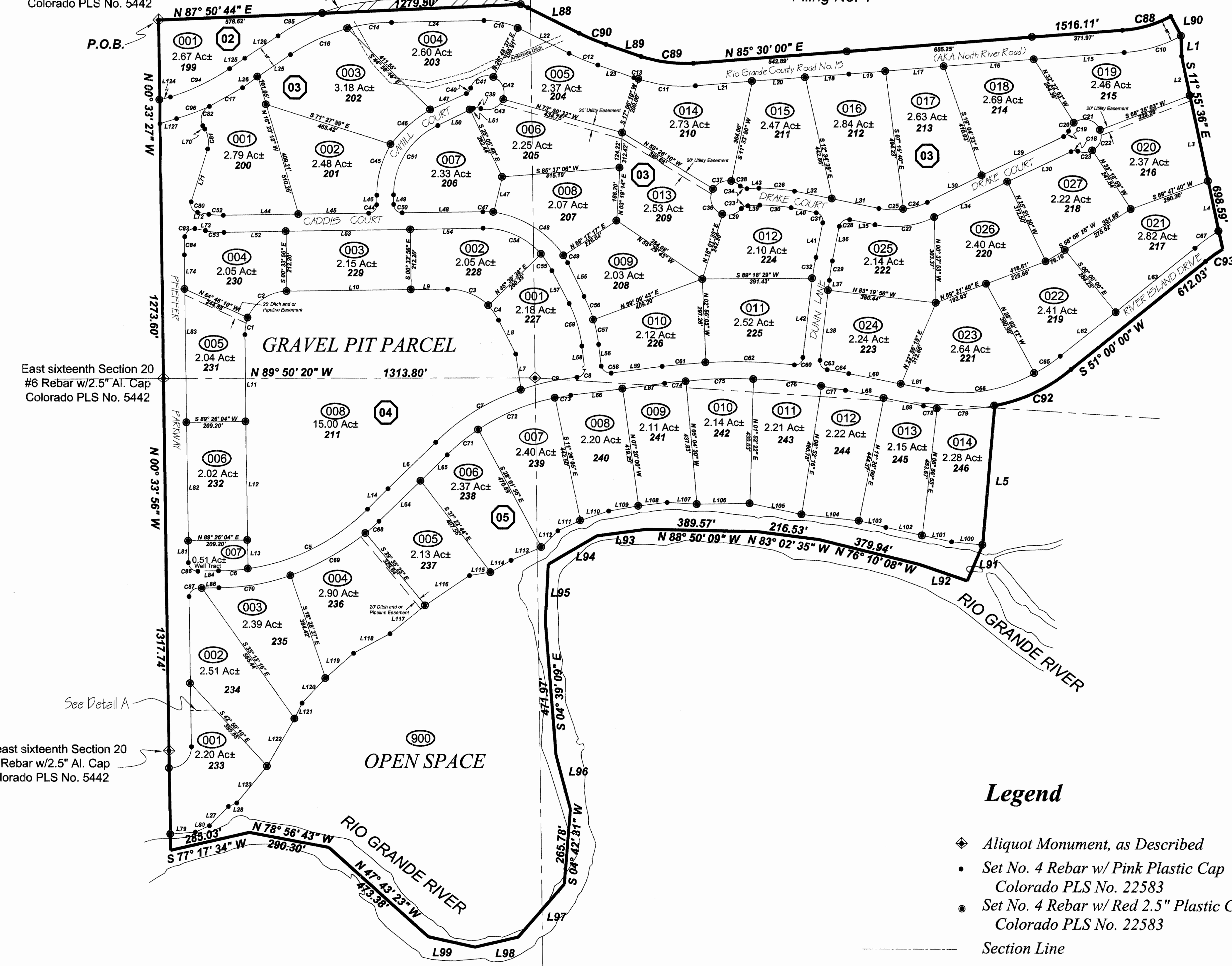
THIS MAP IS FOR ASSESSMENT PURPOSES ONLY. IT IS NOT NECESSARILY ACCURATE BY SURVEYING STANDARDS. DO NOT USE FOR LEGAL CONVEYANCE.



Southeast sixteenth Section 20
 #6 Rebar w/2.5" Al. Cap
 Colorado PLS No. 5442

Area not being dedicated by this plat - out side of ownership by River Island Ranch, Inc.

River Island Ranch
 Filing No. 1



East sixteenth Section 20
 #6 Rebar w/2.5" Al. Cap
 Colorado PLS No. 5442

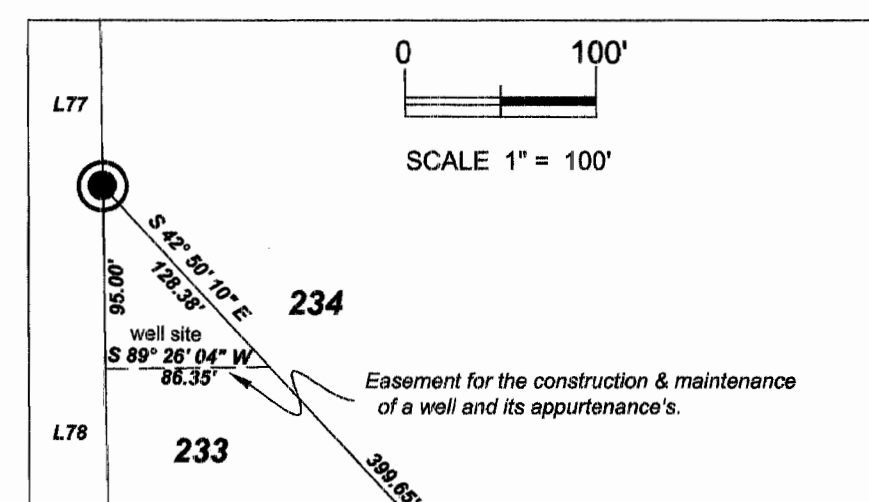
Northeast sixteenth Section 20
 #6 Rebar w/2.5" Al. Cap
 Colorado PLS No. 5442

See Detail A

Legend

- ◆ Aliquot Monument, as Described
- Set No. 4 Rebar w/ Pink Plastic Cap
Colorado PLS No. 22583
- Set No. 4 Rebar w/ Red 2.5" Plastic Cap
Colorado PLS No. 22583
- Section Line
- Subdivision Boundary
- Lot Line
- Easement, as Described

Detail A



19204-02
River Island Ranch,
Filing No. 2
Dr 11 Map 320