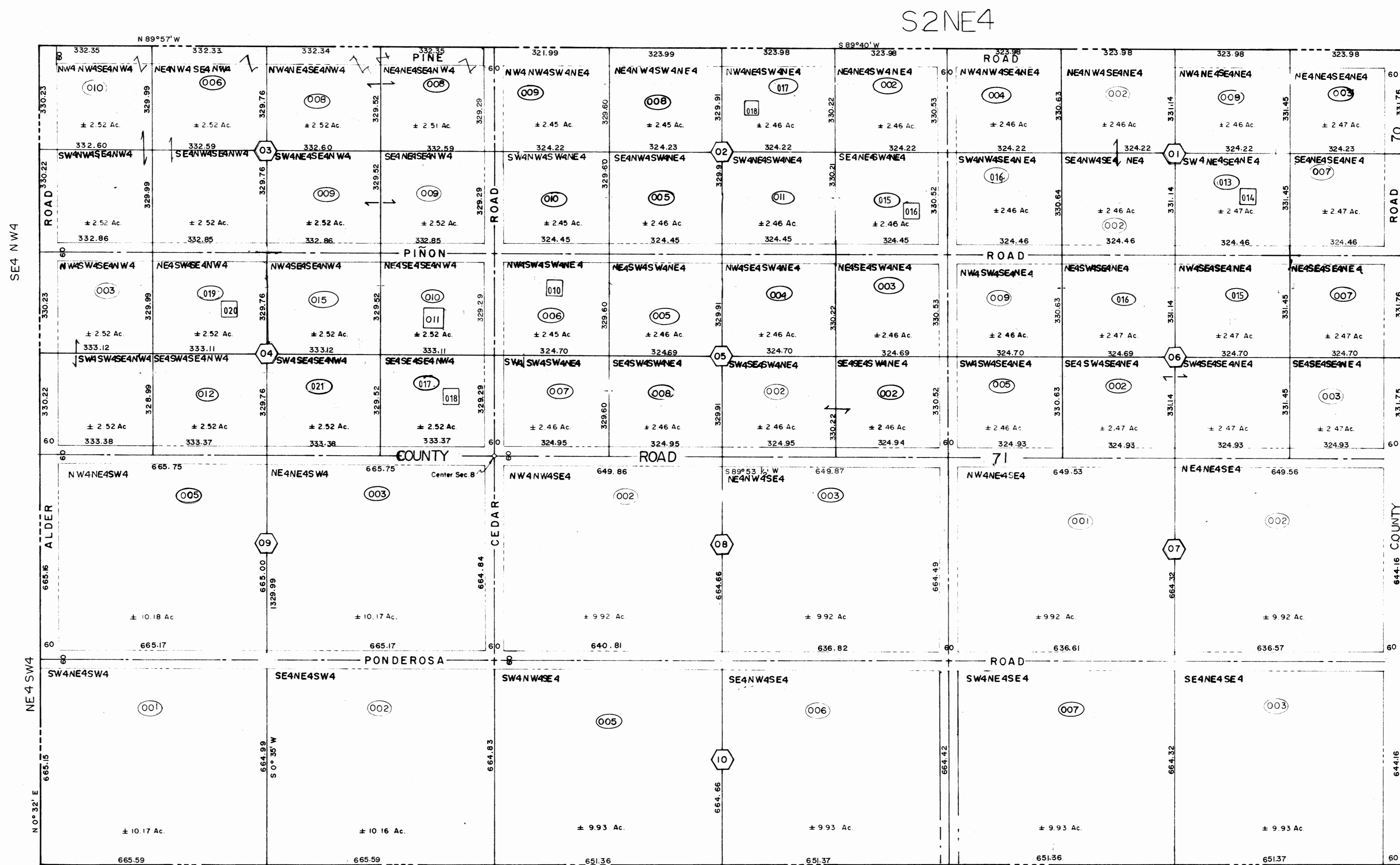
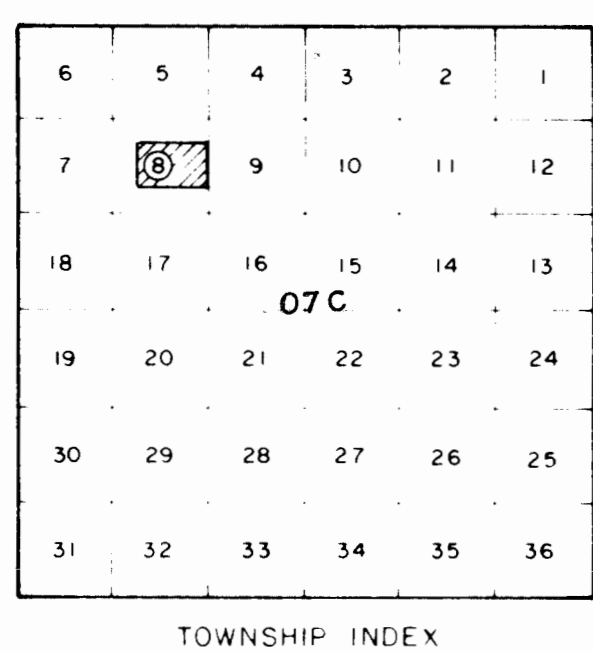
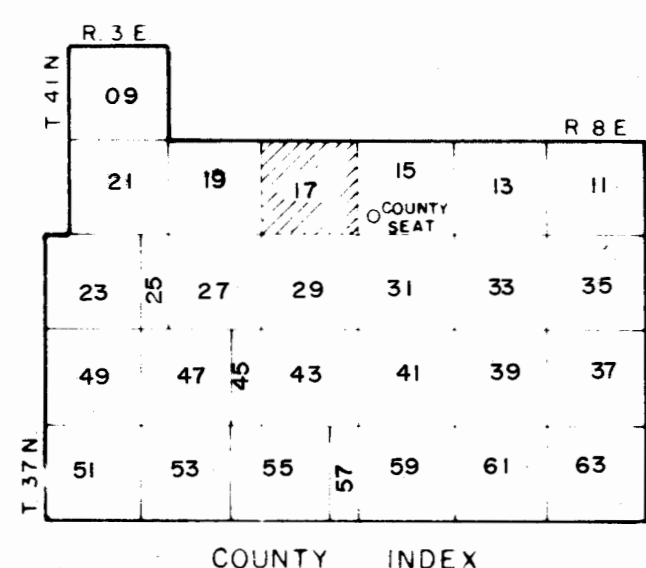
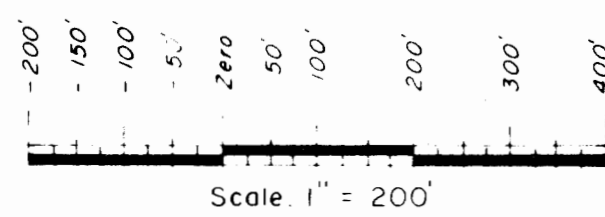


RIO GRANDE COUNTY

Drawn By	A.O.D.	Date	1972-3
Checked By	C.J.M.	Date	1972-3
REVISED			
Date	By	Remarks	
9-17-74	JL	01-09-95 DM	
5-4-75	JL	02-13-97 DM	
7-15-75	P.W.	12-12-97 DM	
7-26-78	EB	1-4-99 DA	
3-5-80	EB	3-18-80 DA	
1-13-81	EB	01-17-01 DA	
1-11-82	EB	02-12-02 DA	
1-27-83	EB	01-07-83 DA	
12-13-84	B.D.	12-12-07 ES	
1-19-88	EB	12-30-85 ES	
1-03-94	DM	12-12-11 ES	
12-21-94	DM	11-06-15MS	



Subdivision fully monumented. For more detail see plat filed in the office of the County Clerk and Recorder.
Acreage figures shown refer to total area within respective tract boundaries and include road rights of way.
Located in N²SE⁴, S²NE⁴, NE⁴SW⁴ and SE⁴NW⁴ of Section 8, T. 40 N., R. 5 E., N.M.P.M.



DAVIS ENGINEERING SERVICE, INC.
P. O. BOX 67 - 576 SPRUCE ST.
DEL NORTE, COLORADO 81132

THIS MAP IS FOR ASSESSMENT PURPOSES ONLY NOT INTENDED TO BE USED FOR LEGAL PURPOSES

17 080

RIO GRANDE RANCHOS (SUBDIVISION)
Fraction of Section 8
T. 40 N., R. 5 E.