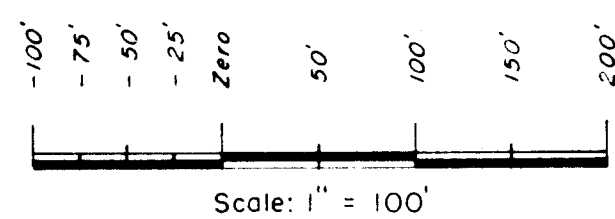
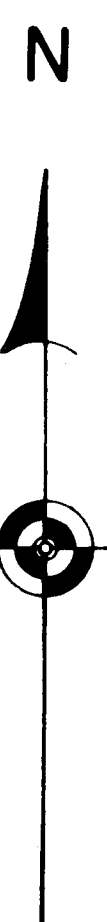
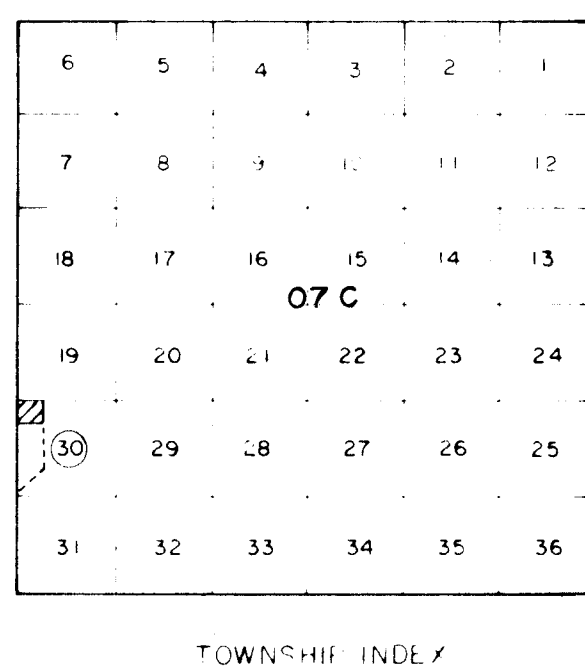
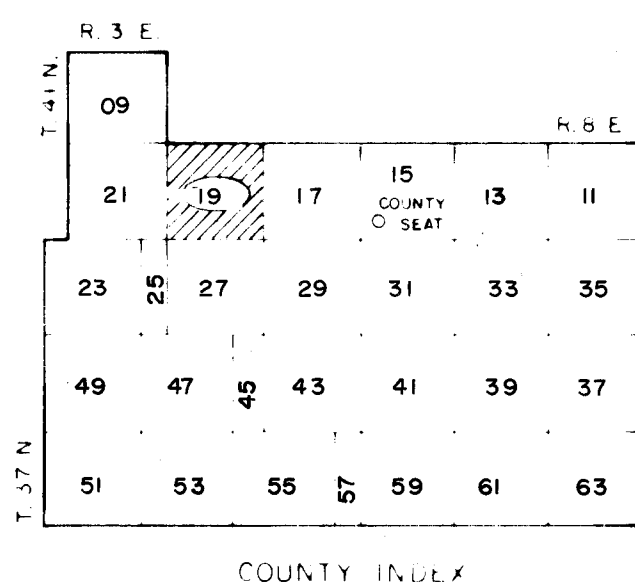
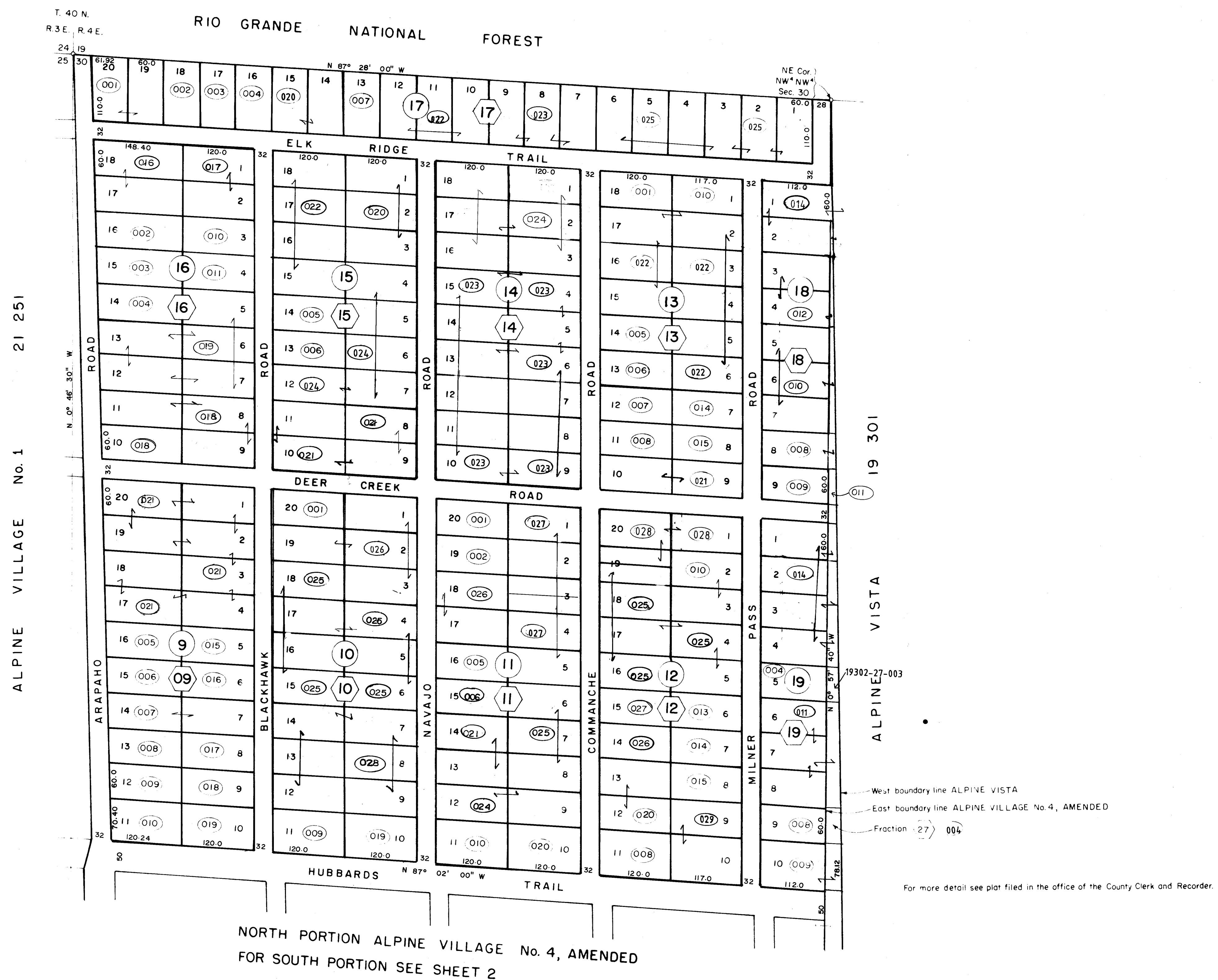


RIO GRANDE COUNTY

DRAWN BY	A.O.D.	DATE	1972-3
CHECKED BY	C.J.M.	DATE	1972-3
REVISIONS			
Date	By	Remarks	
7-1-77	JL	12-21-92 DM	01-04-09 ES
9-12-78	P.L.S.	1-3-94 DM	12-29-10 ES
3-8-80	EB	12-21-94 DM	12-12-11 ES
1-14-81	EB	01-09-95 DM	11-09-12 ES
1-27-83	EB	02-14-97 DM	07-08-14 ES
12-10-84	B.D.	12-31-97 DM	11-09-15 MS
1-5-87	EB	1-5-99 DA	11-16-16 ms
1-20-88	EB	7-22-20 DA	1-11-21 MS
2-7-89	DM	2-21-02 DA	2-9-22 MS
7-23-90	DM	01-07-03 DA	
10-23-91	DM	01-13-04 DA	
		01-26-06 ES	
		12-13-07 ES	



DAVIS ENGINEERING SERVICE, INC.
P. O. BOX 67 - 576 SPRUCE ST.
DEL NORTE, COLORADO 81132



Note: Descr. for Alpine Village No. 4, Amended: Parts of NW⁴NW⁴, SW⁴NW⁴ and a part of NW⁴SW⁴ lying north of County Road and also a part of SE⁴SW⁴ lying north of County Road, all in Sec. 30, T. 40 N., R. 4 E., N.M.P.M.

THIS MAP FOR ASSESSMENT
PURPOSES ONLY NOT INTENDED
TO BE USED FOR LEGAL PURPOSES