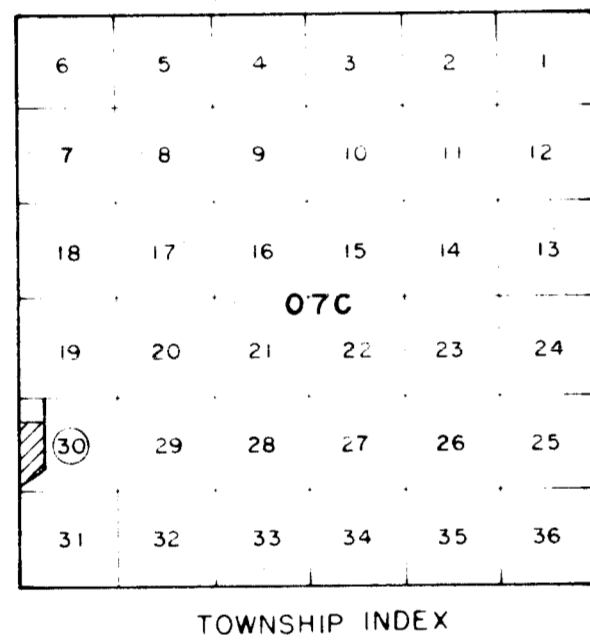
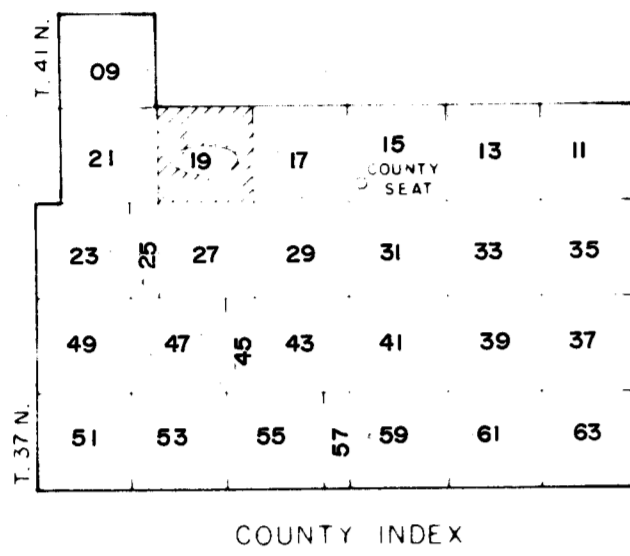
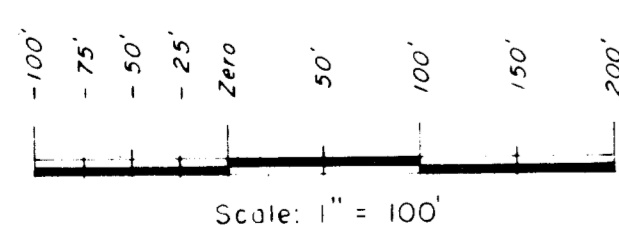


RIO GRANDE COUNTY

Drawn by	ADD	Date	1972-3
Checked by	CJM	Date	1972-3
REVISIONS			
Date	By	Remarks	
9-14-71	JL	1-10-01-DA	
9-15-75	EB	02-21-02-DA	
3-11-80	EB	12-13-07-ES	
12-10-84	B.D.	12-31-09-ES	
1-5-87	EB	12-29-10-ES	
2-2-88	EB	1-1-09-12-ES	
10-23-91	DM	12-31-13-ES	
1-3-94	DM	11-09-15-MS	
12-21-94	DM	1-8-18-MS	
01-09-99	DM	2-9-22-MS	
02-14-97	DM	12-21-22-MS	
01-04-99	DA		
01-04-99	DA		



N

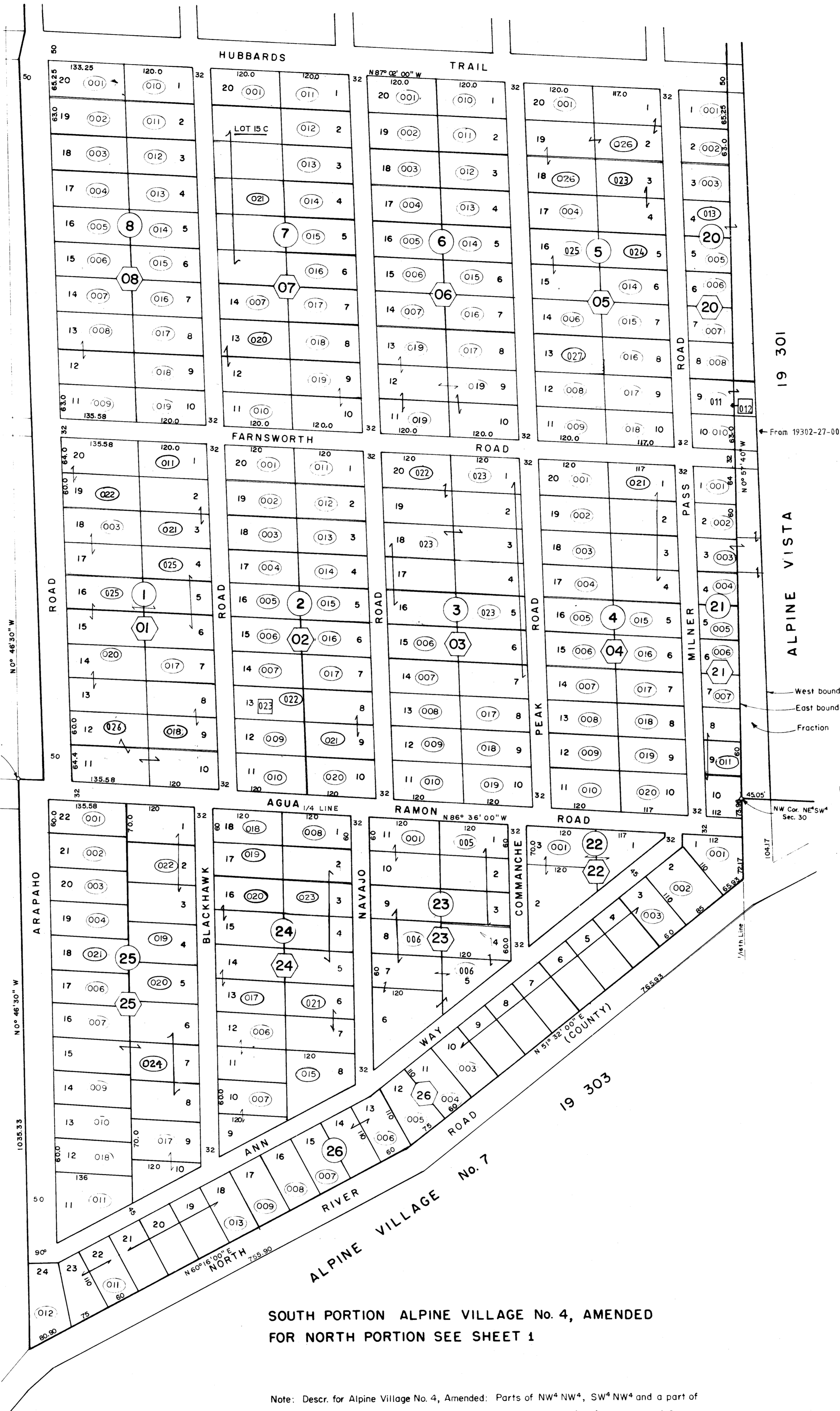


DAVIS ENGINEERING SERVICE, INC.
P. O. BOX 67 - 576 SPRUCE ST.
DEL NORTE, COLORADO 81132

ALPINE VILLAGE No. 2

ALPINE VILLAGE No. 6

MAR
R. 3 E. R. 4 E.
S. 25 S. 30
T. 40 N.



SOUTH PORTION ALPINE VILLAGE No. 4, AMENDED
FOR NORTH PORTION SEE SHEET 1

Note: Descr. for Alpine Village No. 4, Amended: Parts of NW⁴NW⁴, SW⁴NW⁴ and a part of NW⁴SW⁴ lying north of County Road and also a part of SE⁴SW⁴ lying north of County Road, all in Sec. 30, T. 40 N., R. 4 E.

For more detail see plat filed in the office of the County Clerk and Recorder.

THIS MAP FOR ASSESSMENT
PURPOSES ONLY NOT INTENDED
TO BE USED FOR LEGAL PURPOSES

19 302

SHEET 2 OF 2 SHEETS
SOUTH PORTION
ALPINE VILLAGE No. 4, AMENDED
(SEE NOTE FOR DESCR.)

T. 40 N., R. 4 E.