

RIO GRANDE COUNTY

DRAWN BY		DATE	
CHECKED BY		DATE	
REVISED			
Date	By	Remarks	
12-14-97	DM	12-12-11	ES
12-31-97	DM	11-09-12	ES
01-04-98	DA	12-31-13	ES
02-21-02	DA	09-09-14	ES
01-18-01	DA	11-09-15	MS
02-21-02	DA	11-16-16	MS
01-01-03	DA	1-8-18	MS
01-13-04	DM	1-30-19	CF
01-16-05	DM	1-21-20	CF
02-26-06	ES	1-11-21	JVS
12-13-07	ES	7-9-27	MS
01-04-09	ES		
12-29-10	ES		

ALPINE VILLAGE No 4  
19 302 (2 SHEETS)

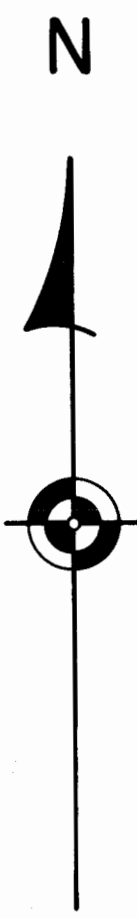
T.4 N.		R.3 E.		R.4 E.	
9					
21	19	17	15	13	11
23	25	27	29	31	33
49	47	45	43	41	39
51	53	55	57	59	61

COUNTY INDEX

6	5	4	3	2	1
7	8	9	10	11	12
18	17	16	15	14	13
19	20	21	22	23	24
30	29	28	27	26	25
31	32	33	34	35	36

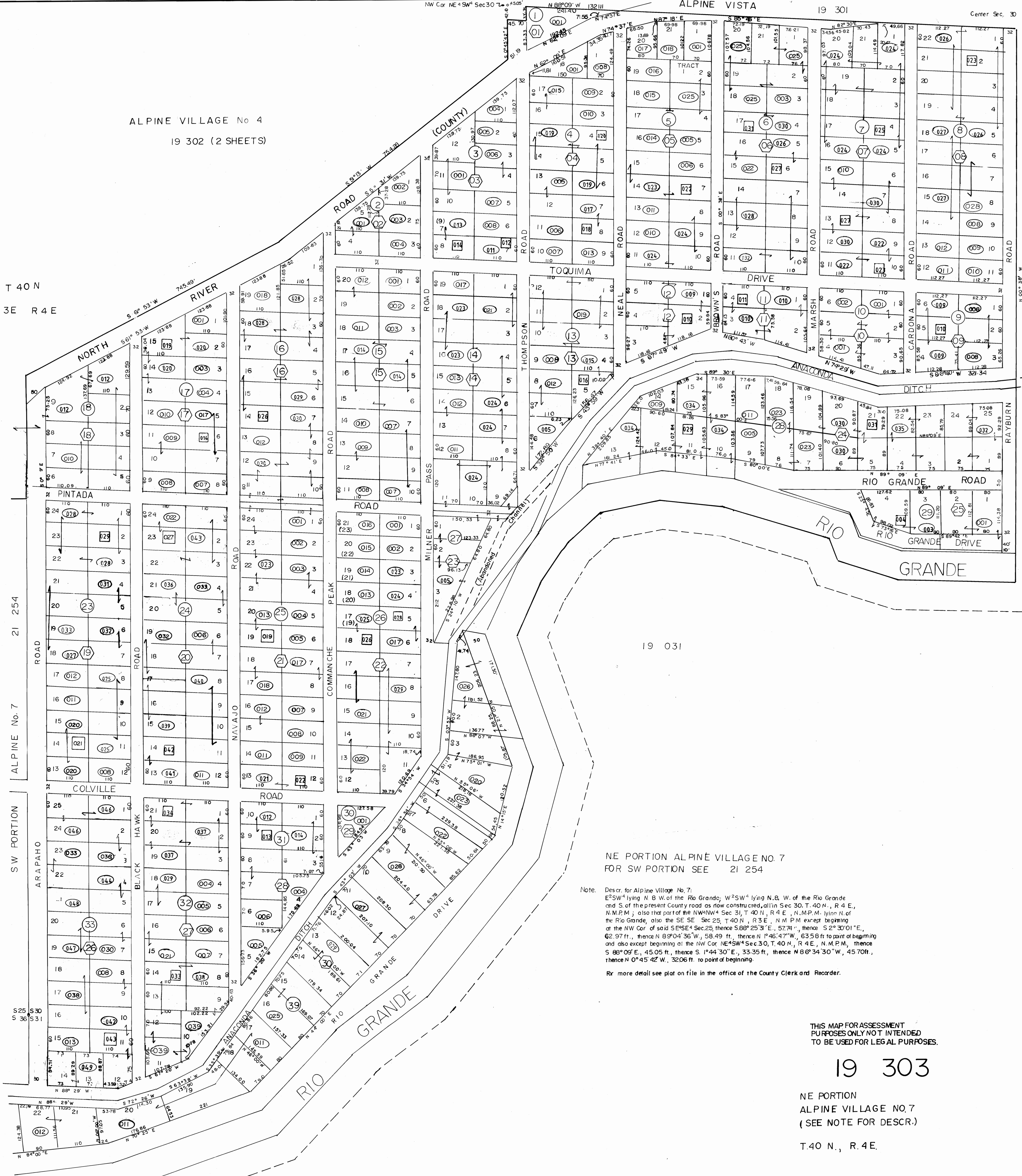
TOWNSHIP INDEX

**NOTICE**  
THIS MAP IS FOR ASSESSMENT PURPOSES ONLY. IT IS NOT NECESSARILY ACCURATE BY SURVEYING STANDARDS. DO NOT USE FOR LEGAL CONVEYANCE.



Davis Engineering Service, Inc.  
576 Spruce Street  
Del Norte, Colorado 81132

T 40 N  
R 3 E R 4 E



NE PORTION ALPINE VILLAGE NO. 7  
FOR SW PORTION SEE 21 254

Note: Descr. for Alpine Village No. 7:  
E<sup>2</sup>S<sup>2</sup>W<sup>4</sup> lying N. B. W. of the Rio Grande, W<sup>2</sup>S<sup>2</sup>W<sup>4</sup> lying N. B. W. of the Rio Grande and S. of the present County road as now constructed, all in Sec 30, T. 40 N., R. 4 E., N.M.P.M.; also that part of the NW<sup>1</sup>/<sub>4</sub> Sec 31, T. 40 N., R. 4 E., N.M.P.M. lying N. of the Rio Grande, also the SE<sup>1</sup>/<sub>4</sub> Sec 25, T. 40 N., R. 3 E., N.M.P.M. except beginning at the NW Cor. of said SE<sup>1</sup>/<sub>4</sub> Sec. 25, thence S 89° 25' 31" E., 57.74', thence S 2° 30' 01" E., 62.97', thence N 89° 04' 36" W., 58.49', thence N 46° 47' W., 63.58' to point of beginning and also except beginning at the NW Cor. NE<sup>1</sup>/<sub>4</sub> Sec 30, T. 40 N., R. 4 E., N.M.P.M., thence S 88° 09' E., 45.05', thence S. 1° 44' 30" E., 33.35', thence N 88° 34' 30" W., 45.70', thence N 0° 45' 42" W., 32.06', to point of beginning.

For more detail see plat on file in the office of the County Clerk and Recorder.

THIS MAP FOR ASSESSMENT PURPOSES ONLY NOT INTENDED TO BE USED FOR LEGAL PURPOSES.

19 303

NE PORTION  
ALPINE VILLAGE NO. 7  
(SEE NOTE FOR DESCR.)

T. 40 N., R. 4 E.