

RIO GRANDE COUNTY

DRAWN BY A.O.D. DATE 1972-3  
 CHECKED BY C.J.M. DATE 1972-3  
 REVISED

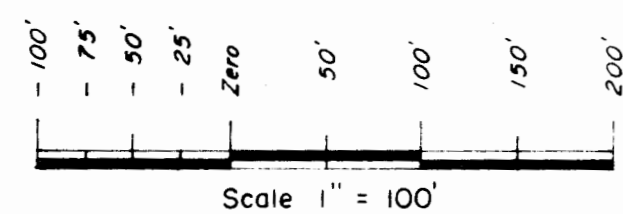
Date	By	Remarks
1-15-79	J.L.	1-9-87 EB 01-18-04 D9
2-6-75	J.L.	2-2-88 EB 12-12-07 ES
8-1-75	J.L.	2-7-89 DM 01-04-10 ES
8-11-76	EB	1-3-94 DM 12-29-10 ES
9-12-77	EB	12-21-94 DM 12-19-11 ES
7-27-78	EB	01-09-95 DM 11-09-12 ES
3-11-80	EB	01-15-96 DM 01-02-14 ES
1-14-81	EB	01-02-98 DM 09-17-14 ES
1-11-82	EB	01-05-99 DA 11-11-21 MS
1-27-83	EB	02-02-800 DA
1-26-84	EB	01-11-01 DA
12-10-84	BD	02-21-92 DA
1	BD	08-01-93 DA

COUNTY INDEX

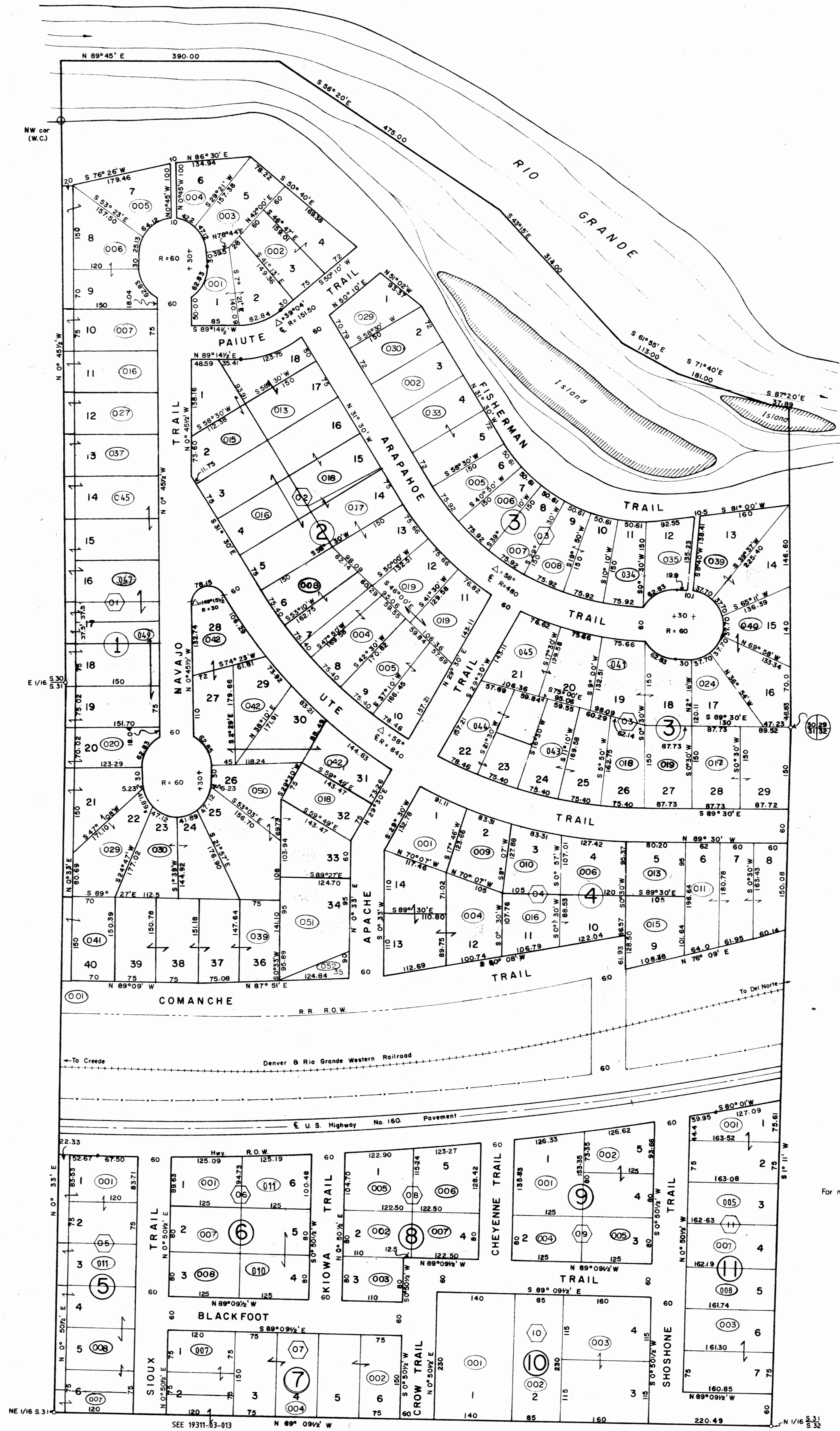
09	10	11
21	19	17
23	27	29
49	47	43
51	53	55

TOWNSHIP INDEX

6	5	4	3	2	1
7	8	9	10	11	12
18	17	16	15	14	13
19	20	21	22	23	24
30	29	28	27	26	25
31	32	33	34	35	36



DAVIS ENGINEERING SERVICE, INC.  
 P. O. BOX 67 - 576 SPRUCE ST.  
 DEL NORTE, COLORADO 81132



For more detail see plat on file in the office of the County Clerk and Recorder

THIS MAP FOR ASSESSMENT PURPOSES ONLY NOT INTENDED TO BE USED FOR LEGAL PURPOSES

19 310

INDIAN TRAILS DEVELOPMENT No. 1  
 SE<sup>4</sup>SE<sup>4</sup> Sec. 30 and NE<sup>4</sup>NE<sup>4</sup> Sec. 31

T. 40 N., R. 4 E.