

19-312-02
HIDDEN VIEW RANCHES
FR of the E 1/2 E 1/2 NW 1/4 and W 1/2 W 1/2 NE 1/4

RIO GRANDE COUNTY

DRAWN BY	L.G.C.	DATE	02/26/01
CHECKED BY		DATE	
REVISED			
Date	By	Remarks	
12-06	JM		
12-07	ES		
11-02-12	ES		

R. 3 E.		R. 4 E.	
9	10	11	12
21	22	23	24
33	34	35	36
47	48	49	50
53	54	55	56
61	62	63	64

COUNTY INDEX

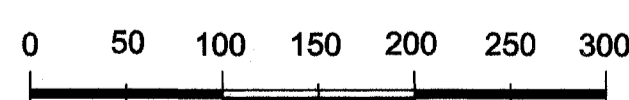
6	5	4	3	2	1
7	8	9	10	11	12
18	17	16	15	14	13
19	20	21	22	23	24
30	29	28	27	26	25
31	32	33	34	35	36

TOWNSHIP INDEX

NOTICE

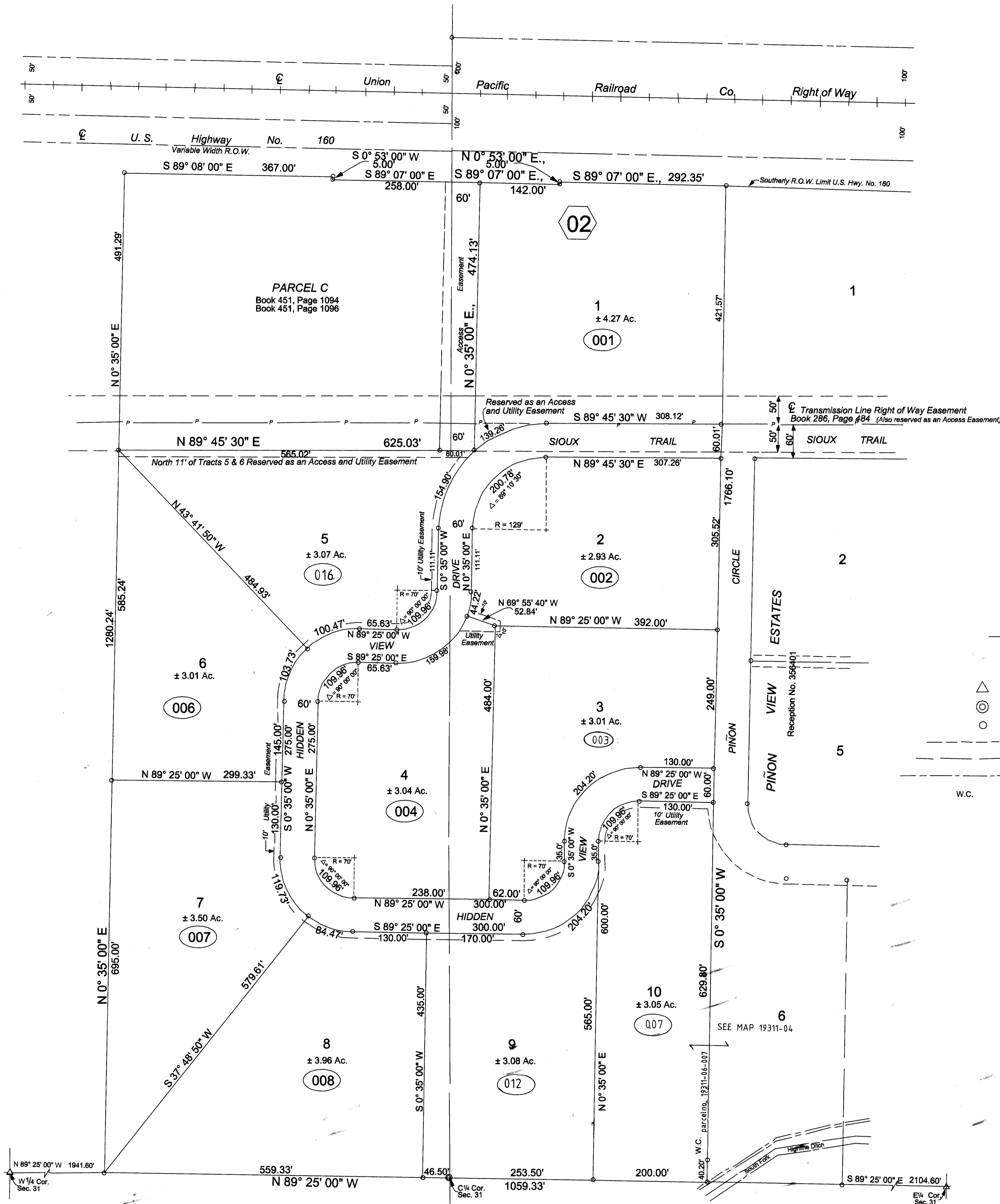
THIS MAP IS FOR ASSESSMENT PURPOSES ONLY. IT IS NOT NECESSARILY ACCURATE BY SURVEYING STANDARDS. DO NOT USE FOR LEGAL CONVEYANCE.

N



SCALE 1" = 100'

Original Drawing by:
San Luis Valley GIS/GPS Authority
P.O. Box 300
Alamosa, Colorado 81101



19-312-02
HIDDEN VIEW RANCHES
FR of the E 1/2 E 1/2 NW 1/4 and W 1/2 W 1/2 NE 1/4
Section 31, T. 40 N. R. 4 E., N.M.P.M.
RIO GRANDE COUNTY, COLORADO
Drawer 11, Map 116