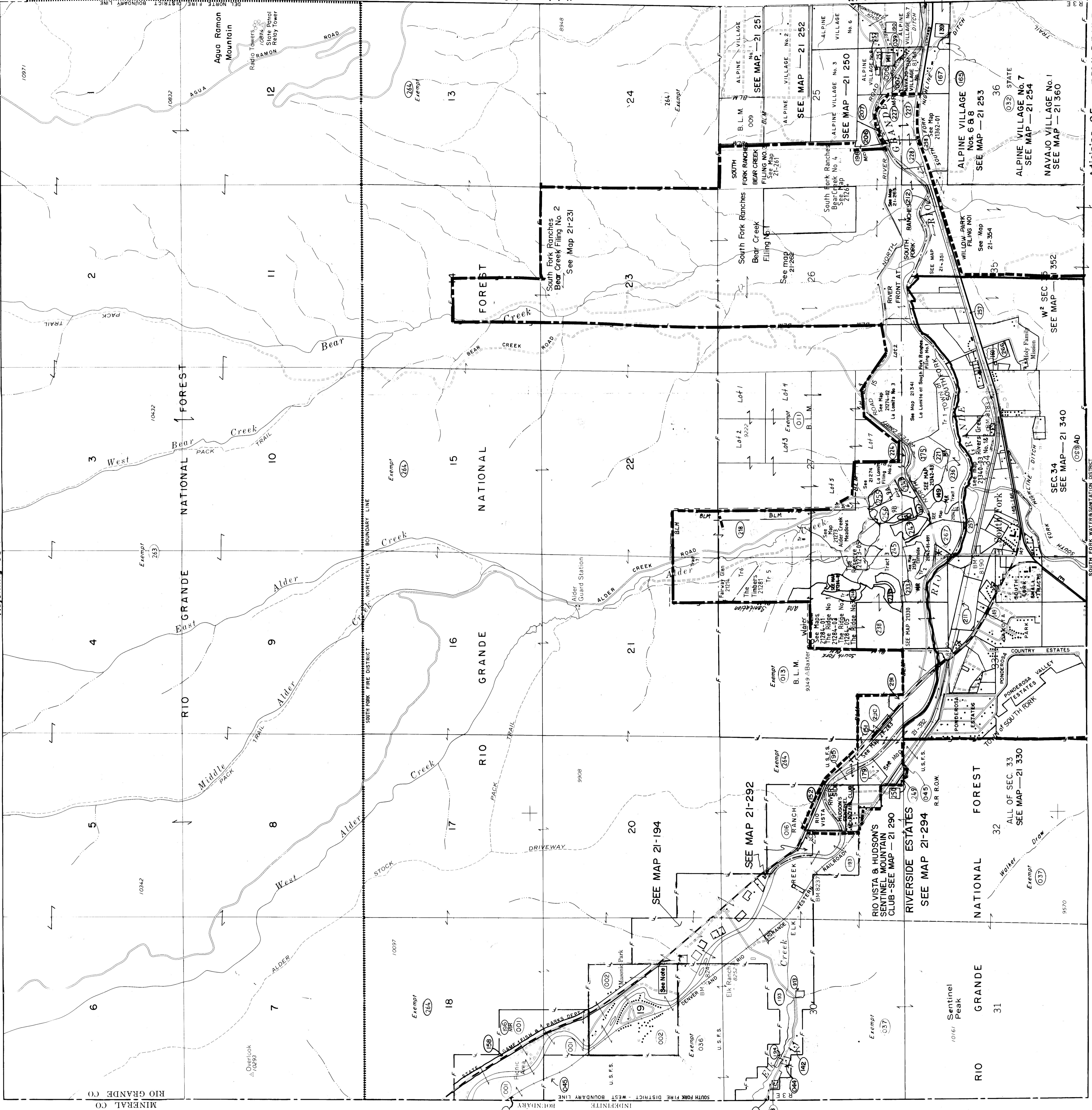


# RIO GRANDE COUNTY

Drawn By	A.O.D.	Date	1972-3
Checked By	C.J.M.	Date	1972-3
Date	By	Revised	Remarks
8-17-72	J.L.	2-2-88	EB 1/2-203 DM
8-15-75	E.B.	2-2-89	DM 1/1-166 DM
8-12-76	J.L.	7-24-80	DM 1/1-166 DM
9-12-77	EB	12-12-78	DM 1/1-166 DM
7-27-78	EB	12-13-77	ES
3-11-80	EB	1-6-94	DM 1/1-166 DM
1-11-82	EB	12-29-80	ES
1-27-83	EB	12-29-80	ES
1-26-84	EB	01-09-84	DM 1/1-166 DM
1-26-84	EB	01-09-84	DM 1/1-166 DM
1-26-84	EB	01-09-84	DM 1/1-166 DM
1-9-87	EB	12-21-87	MS

09	10	11	12
13	14	15	16
17	18	19	20
21	22	23	24
25	26	27	28
29	30	31	32
33	34	35	36
37	38	39	40
41	42	43	44
45	46	47	48
49	50	51	52
53	54	55	56
57	58	59	60
61	62	63	64
65	66	67	68
69	70	71	72
73	74	75	76
77	78	79	80
81	82	83	84
85	86	87	88
89	90	91	92
93	94	95	96
97	98	99	100

1	2	3	4
5	6	7	8
9	10	11	12
13	14	15	16
17	18	19	20
21	22	23	24
25	26	27	28
29	30	31	32
33	34	35	36



Adjoining 09  
Adjoining 19  
Adjoining 25  
Adjoining 23

10971  
10832  
10432  
10342  
10297  
10097  
10161  
9908  
9570

AQUA RAMON Mountain  
Radio Towers  
State Patrol  
Relay Tower

FOREST  
NATIONAL  
RIO GRANDE  
FOREST  
NATIONAL  
RIO GRANDE  
FOREST  
NATIONAL  
RIO GRANDE  
FOREST

South Fork Ranches Bear Creek Filing No. 2  
See Map 21-231

South Fork Ranches Bear Creek Filing No. 3  
See Map 21-252

South Fork Ranches Bear Creek Filing No. 4  
See Map 21-250

ALPINE VILLAGE No. 2  
SEE MAP — 21 252

ALPINE VILLAGE No. 3  
SEE MAP — 21 250

ALPINE VILLAGE No. 6  
SEE MAP — 21 250

ALPINE VILLAGE Nos. 6 & 8  
SEE MAP — 21 253

ALPINE VILLAGE No. 7  
SEE MAP — 21 254

NAVAJO VILLAGE No. 1  
SEE MAP — 21 360

WILLOW PARK FILING NO. 1  
See Map 21-354

W2 SEC 34  
SEE MAP — 21 352

SEC 34  
SEE MAP — 21 340

SEC 33  
SEE MAP — 21 330

ALL OF SEC. 33  
SEE MAP — 21 330

U.S.F.S. 036  
U.S.F.S. 037  
U.S.F.S. 038  
U.S.F.S. 039  
U.S.F.S. 040  
U.S.F.S. 041  
U.S.F.S. 042  
U.S.F.S. 043  
U.S.F.S. 044  
U.S.F.S. 045  
U.S.F.S. 046  
U.S.F.S. 047  
U.S.F.S. 048  
U.S.F.S. 049  
U.S.F.S. 050  
U.S.F.S. 051  
U.S.F.S. 052  
U.S.F.S. 053  
U.S.F.S. 054  
U.S.F.S. 055  
U.S.F.S. 056  
U.S.F.S. 057  
U.S.F.S. 058  
U.S.F.S. 059  
U.S.F.S. 060  
U.S.F.S. 061  
U.S.F.S. 062  
U.S.F.S. 063  
U.S.F.S. 064  
U.S.F.S. 065  
U.S.F.S. 066  
U.S.F.S. 067  
U.S.F.S. 068  
U.S.F.S. 069  
U.S.F.S. 070  
U.S.F.S. 071  
U.S.F.S. 072  
U.S.F.S. 073  
U.S.F.S. 074  
U.S.F.S. 075  
U.S.F.S. 076  
U.S.F.S. 077  
U.S.F.S. 078  
U.S.F.S. 079  
U.S.F.S. 080  
U.S.F.S. 081  
U.S.F.S. 082  
U.S.F.S. 083  
U.S.F.S. 084  
U.S.F.S. 085  
U.S.F.S. 086  
U.S.F.S. 087  
U.S.F.S. 088  
U.S.F.S. 089  
U.S.F.S. 090  
U.S.F.S. 091  
U.S.F.S. 092  
U.S.F.S. 093  
U.S.F.S. 094  
U.S.F.S. 095  
U.S.F.S. 096  
U.S.F.S. 097  
U.S.F.S. 098  
U.S.F.S. 099  
U.S.F.S. 100

Exempt (263)  
Exempt (264)  
Exempt (265)  
Exempt (266)  
Exempt (267)  
Exempt (268)  
Exempt (269)  
Exempt (270)  
Exempt (271)  
Exempt (272)  
Exempt (273)  
Exempt (274)  
Exempt (275)  
Exempt (276)  
Exempt (277)  
Exempt (278)  
Exempt (279)  
Exempt (280)  
Exempt (281)  
Exempt (282)  
Exempt (283)  
Exempt (284)  
Exempt (285)  
Exempt (286)  
Exempt (287)  
Exempt (288)  
Exempt (289)  
Exempt (290)  
Exempt (291)  
Exempt (292)  
Exempt (293)  
Exempt (294)  
Exempt (295)  
Exempt (296)  
Exempt (297)  
Exempt (298)  
Exempt (299)  
Exempt (300)

12  
11  
10  
9  
8  
7  
6  
5  
4  
3  
2

13  
14  
15  
16  
17  
18  
19  
20  
21  
22  
23  
24  
25  
26  
27  
28  
29  
30  
31  
32  
33  
34  
35  
36

FROM 19-12-00-430  
FROM 19-12-00-430

Adjoining 25 T. 39 N., R. 3 1/2 E  
Adjoining 23

23-012-00-405  
21331-00-234  
21331-06

Note: Improvements Only—Masonic Park  
SEE MAP 21-180

21

T. 40 N., R. 3 E.

Scale: 1" = 1200'

DAVIS ENGINEERING SERVICES, INC.  
P. O. BOX 87 - 5th STREET, S.E.  
DALLAS, TEXAS 75202

Last parcel number used 267