

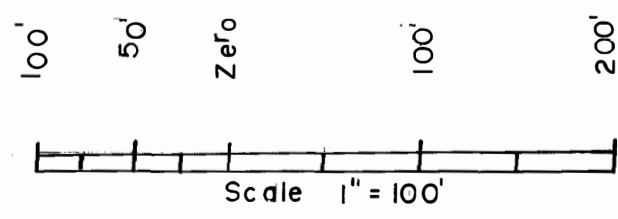
RIOGRANDE COUNTY

8-26-77	EB	11-6-12 ES
3-1-80	EB	1115/21
1-19-81	EB	
12-13-94	BD	
7-24-94	DM	
12-21-94	DM	
10-23-94	DM	
4-17-92	DM	
12-22-92	DM	
11-6-94	DM	
1-5-99	DA	
3-24-06	ES	
01-05-10	ES	

09					
19	17	15	13	11	
23	27	29	31	33	35
49	47	43	41	39	37
51	53	55	59	61	63

6	5	4	3	2	1
7	8	9	10	11	12
18	17	16	15	14	13
19	20	21	22	23	24
30	29	28	27	26	25
31	32	33	34	35	36

N

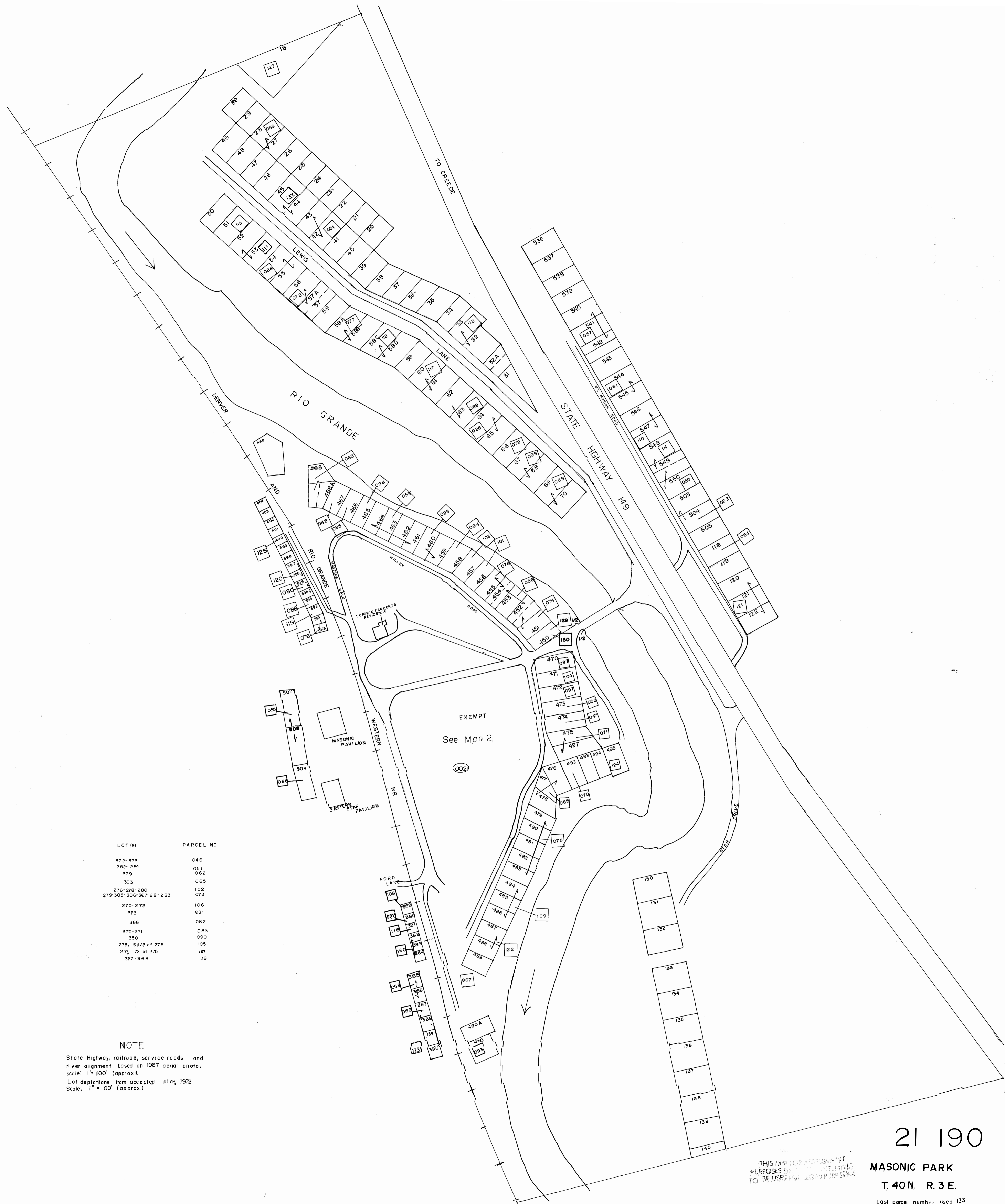


TAX DISTRICT 07C

LOT (S)	PARCEL NO.
372-373	046
282-284	051
379	062
303	065
276-278-280	102
279-305-306-307-281-283	073
270-272	106
363	081
366	082
376-371	083
350	090
273, S 1/2 of 275	105
271, 1/2 of 275	109
367-368	116

NOTE

State Highway, railroad, service roads and river alignment based on 1967 aerial photo, scale: 1" = 100' (approx).
Lot depictions from accepted plat 1972
Scale: 1" = 100' (approx).



21 190

THIS MAP FOR ASSESSMENT PURPOSES ONLY. IT IS INTENDED TO BE USED FOR LEGAL PURPOSES.

MASONIC PARK
T. 40 N. R. 3 E.

Lost parcel number used 133