

21-342-04
 NW1/4 Section 34
 T40N R3E, N.M.P.M.
RIVER CLUB AT
SOUTH FORK RANCHES,
PHASE I THRU 4
 Dr. 11, Map 2 29
RIO GRANDE COUNTY

DRAWN BY	A.W.M.	DATE	04/24/06
CHECKED BY		DATE	
REVISED			
Date	By	Remarks	
12-17-07	ES		
12-31-10	EL		
11-29-12	ES		
1-25-18	MS		

R. 3 E		R. 8 E	
T. 41 N.	9	15	11
21	19	17	13
23	25	27	31
29	31	33	35
49	47	43	41
39	37	35	33
51	53	55	57
59	61	63	65

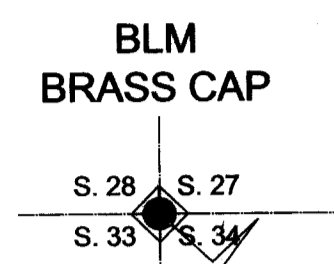
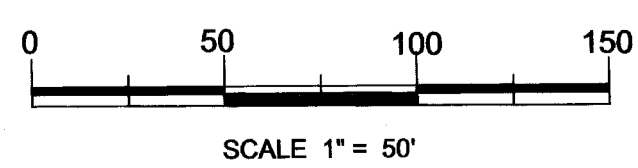
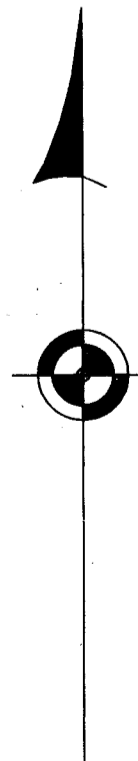
COUNTY INDEX

6	5	4	3	2	1
7	8	9	10	11	12
18	17	16	15	14	13
19	20	21	22	23	24
30	29	28	27	26	25
31	32	33	34	35	36

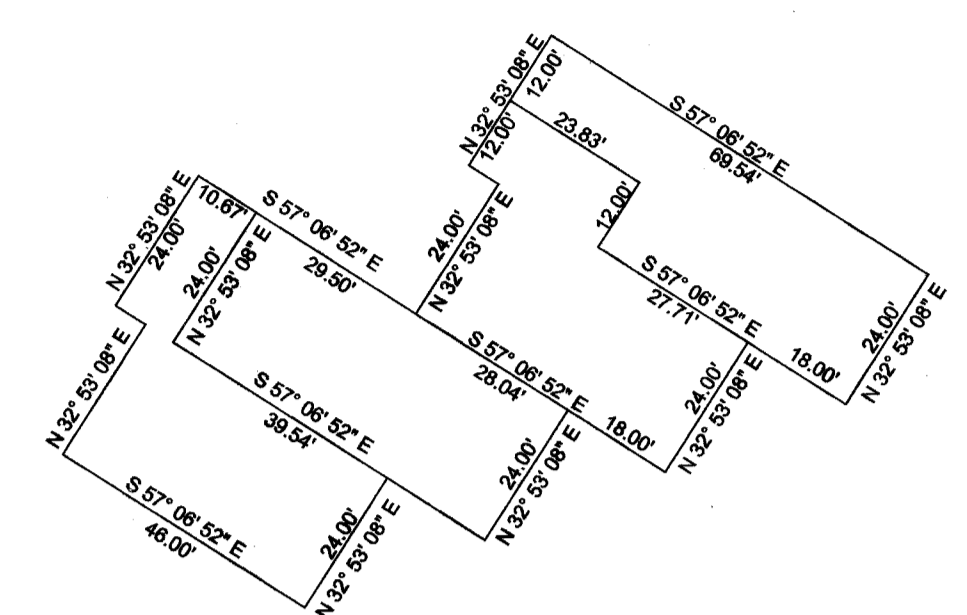
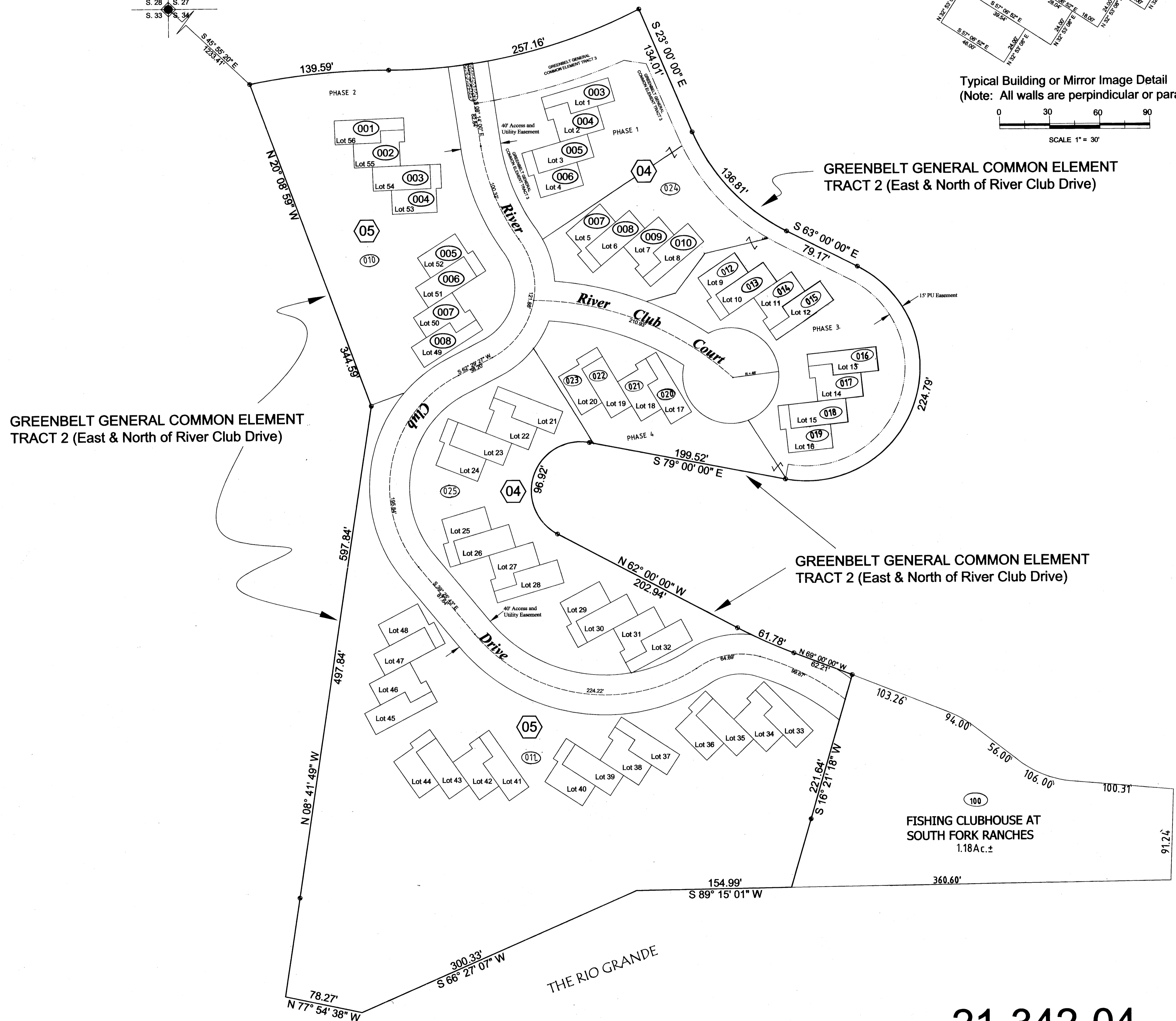
TOWNSHIP INDEX

NOTICE
 THIS MAP IS FOR ASSESSMENT PURPOSES ONLY. IT IS NOT NECESSARILY ACCURATE BY SURVEYING STANDARDS. DO NOT USE FOR LEGAL CONVEYANCE.

N



S. 28° S. 27
 S. 33° S. 34



Typical Building or Mirror Image Detail
 (Note: All walls are perpendicular or parallel)
 SCALE 1" = 30'

GREENBELT GENERAL COMMON ELEMENT TRACT 2 (East & North of River Club Drive)

GREENBELT GENERAL COMMON ELEMENT TRACT 2 (East & North of River Club Drive)

GREENBELT GENERAL COMMON ELEMENT TRACT 2 (East & North of River Club Drive)

FISHING CLUBHOUSE AT SOUTH FORK RANCHES
 1.18 Ac. ±

Denotes Recovered Survey Monument, Colorado PLS No. 22583

21-342-04
 NW1/4 Section 34
 T40N R3E, N.M.P.M.
RIVER CLUB
AT SOUTH FORK RANCHES,
PHASE I THRU 4