

RIO GRANDE COUNTY

LA LOMITA AT SOUTH FORK RANCHES
FILING NO. 1
See Map 21-341

DRAWN BY A.O.D. DATE 1972-3
CHECKED BY C.J.M. DATE 1972-3
REVISED

Date	By			
9-19-74	SL	1-9-87	EB	02-22-80 DA
5-6-75	SL	2-9-88	EB	04-30-81 DM
7-30-75	P.L.	2-8-89	DM	8-27-92 DA
8-12-76	EB	8-2-90	DM	1-14-84 DA
9-13-77	EB	12-21-90	DM	1-17-88 DM
8-11-78	EB	0-25-91	DM	9-13-84 JM
3-12-80	EB	08-14-92	DM	12-15-06 JM
1-19-81	EB	11-0-94	DM	12-17-07 ES
1-12-82	EB	11-08-94	DM	01-08-10 ES
2-2-83	EB	01-07-96	DM	11-20-12 ES
1-26-84	EB	02-09-97	DM	01-06-14 ES
12-20-84	R.O.	2-5-98	DM	11-10-15 MS
1 3/4 80		1-7-99	DA	2-24-22 MS

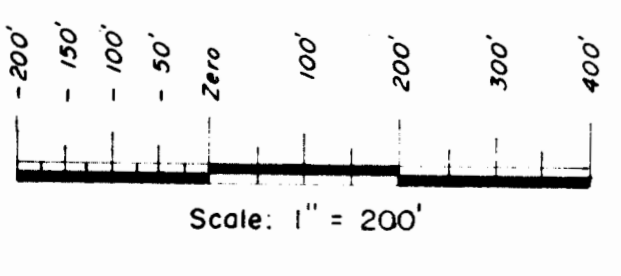
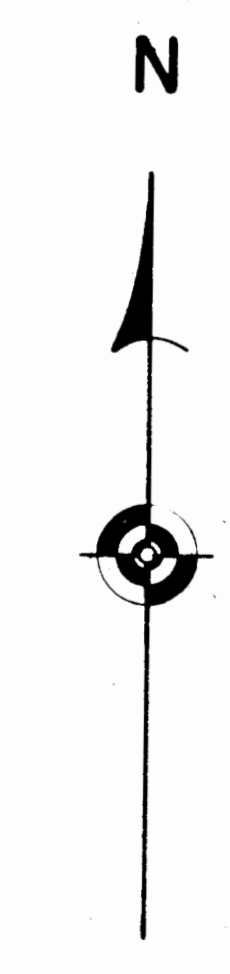
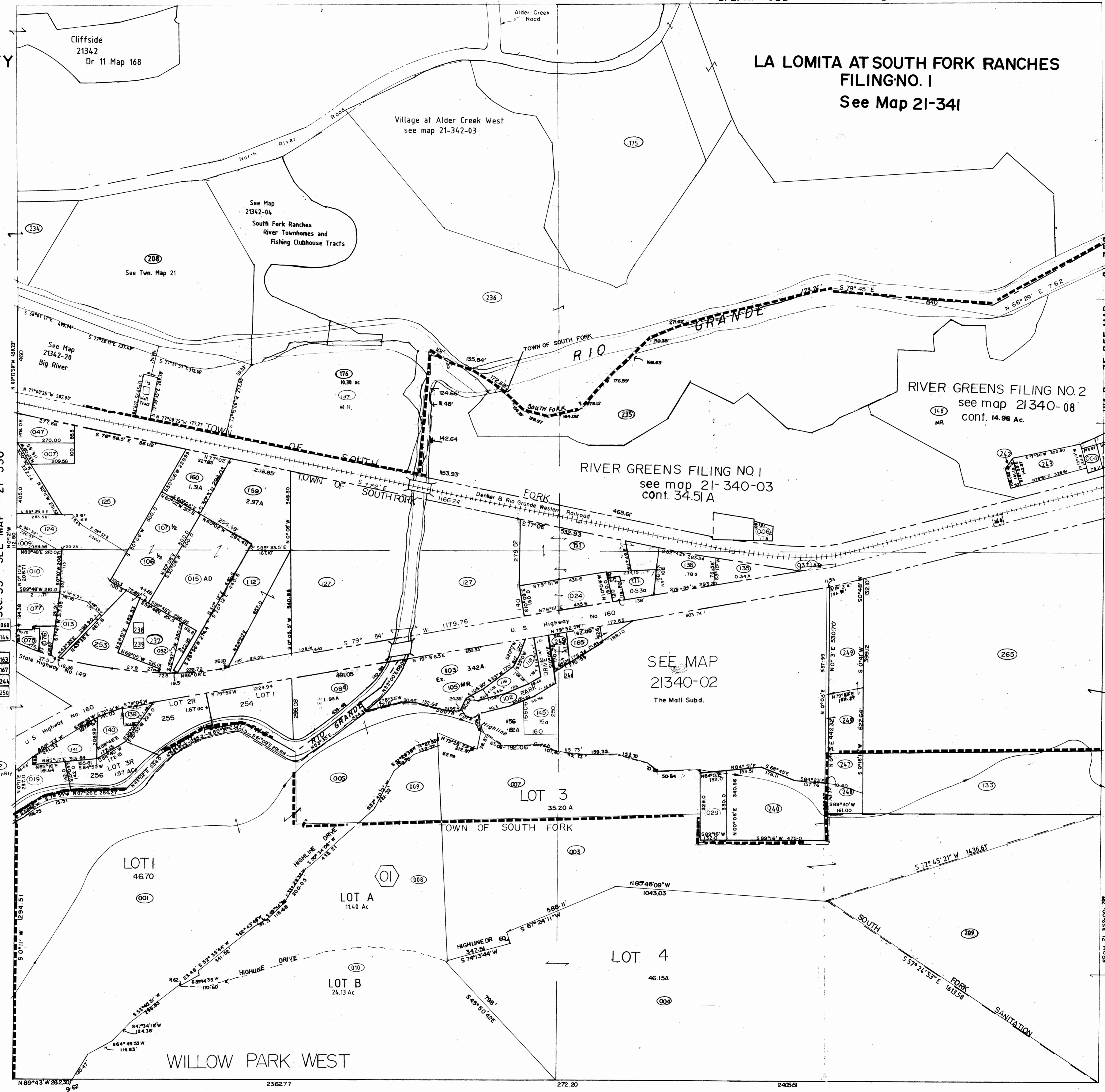
R.3 E. T.41 N.

09	19	17	15	13	11
23	27	29	31	33	35
49	47	45	43	41	39
51	53	55	57	59	61

COUNTY INDEX

6	5	4	3	2	1
7	8	9	10	11	12
18	17	16	15	14	13
19	20	21	22	23	24
30	29	28	27	26	25
31	32	33	34	35	36

TOWNSHIP INDEX



DAVIS ENGINEERING SERVICE, INC.
P. O. BOX 67 - 576 SPRUCE ST.
DEL NORTE, COLORADO 81132

THIS MAP FOR ASSESSMENT PURPOSES ONLY NOT INTENDED TO BE USED FOR LEGAL PURPOSES

21 340

Section 34
T.40 N., R.3 E.

Last parcel No. used 253