

LA LOMITA AT SOUTH FORK RANCHES FILING NO. 3

Fr. Secs 26, 27, 34 and 35 T40N R3E Dr. 11 Map 141

RIO GRANDE COUNTY

DRAWN BY	L.G.C.	DATE	2-18-02
CHECKED BY		DATE	
REVISED			
Date	By	Remarks	
01-07-02	DA		
1-21-20	CF		
1-12-21	CF		
2-24-22	MS		

R. 3 E.				R. 8 E.	
T. 41 N.	9	19	17	15	11
	21	27	29	31	35
	23	47	43	41	37
	49	53	55	59	63
	51	57	59	61	63

COUNTY INDEX

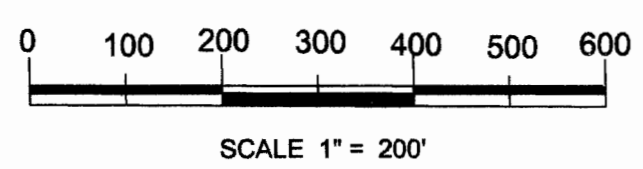
6	5	4	3	2	1
7	8	9	10	11	12
18	17	16	15	14	13
19	20	21	22	23	24
30	29	28	27	26	25
31	32	33	34	35	36

TOWNSHIP INDEX

NOTICE

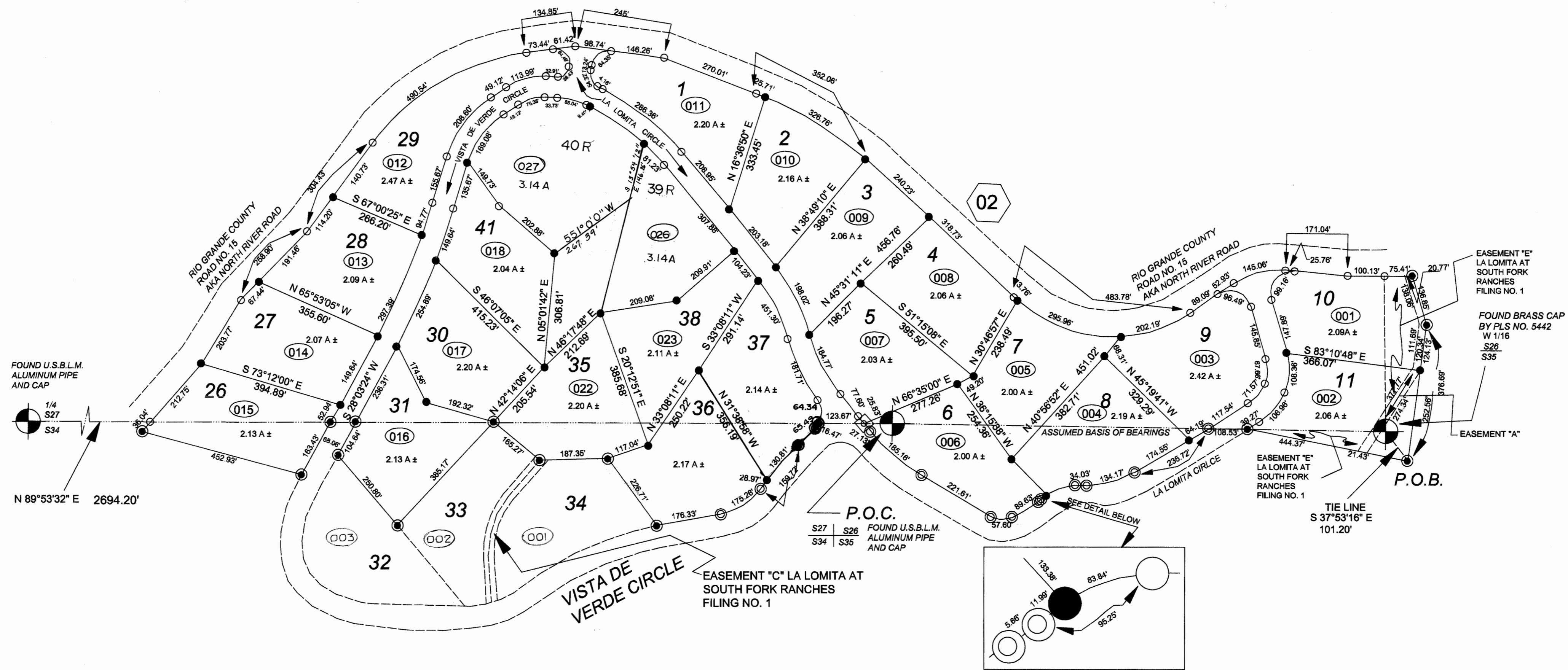
THIS MAP IS FOR ASSESSMENT PURPOSES ONLY. IT IS NOT NECESSARILY ACCURATE BY SURVEYING STANDARDS. DO NOT USE FOR LEGAL CONVEYANCE.

N



SCALE 1" = 200'

Assessor's Plat By: San Luis Valley GIS/GPS Authority, P.O. Box 300, Alamosa, Colorado 81101, 719-589-6099



LEGEND

- ALIQUOT MONUMENT AS NOTED
- SET 1/2" REBAR WITH 2.5" RED PLASTIC CAP BY COLO. PLS # 19883
- SET 1/2" REBAR WITH 1" YELLOW PLASTIC CAP BY COLO. PLS # 19883
- FOUND 1/2" REBAR WITH 3.25" RED PLASTIC CAP BY COLO. PLS # 19883 (FROM PREVIOUS SURVEY)
- FOUND 1/2" REBAR WITH 1" YELLOW PLASTIC CAP BY COLO. PLS # 19883 (FROM PREVIOUS SURVEY)
- FOUND 1/2" REBAR WITH 3.25" YELLOW PLASTIC CAP BY NO. 19883 (FPS)
- SET 3.25" RED PLASTIC CAP BY SOLO. PLS NO. 19883
- BOUNDARY LINE
- LOT LINES
- ALIQUOT LINES
- TIE LINES AND / OR EASTMENT SIDELINES

21 - 274 - 02 LA LOMITA AT SOUTH FORK RANCHES FILING NO. 3

Fr. Secs 26, 27, 34 and 35 T40N R3E Dr. 11 Map 141