

21-281  
SOUTH FORK RANCHES  
THE TIMBERS  
Fr NE<sup>4</sup> Fr SE<sup>4</sup> Sec 28 T40N R3E  
DR 11 MAP 176

RIO GRANDE COUNTY

DRAWN BY		DATE	
CHECKED BY		DATE	
REVISED			
Date	By	Remarks	
01/07/03	L.G.C.	update	
01/17/05	D.F.		
1-30-06	ES		
12-14-07	ES		
11-16-12	ES		

R. 3 E.		R. 8 E.	
T. 41 N.	9	15	11
COUNTY OF SEAT			
21	19	17	13
23	27	29	31
49	47	45	43
51	53	55	57
59	61	63	65

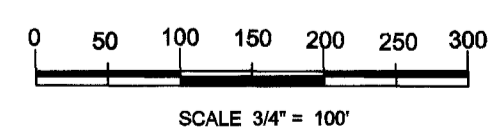
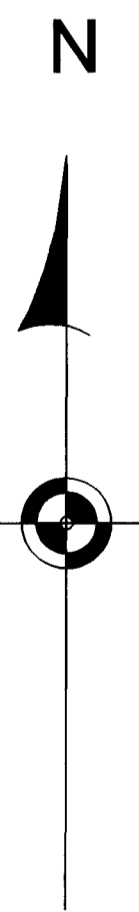
COUNTY INDEX

6	5	4	3	2	1
7	8	9	10	11	12
18	17	16	15	14	13
19	20	21	22	23	24
30	29	28	27	26	25
31	32	33	34	35	36

TOWNSHIP INDEX

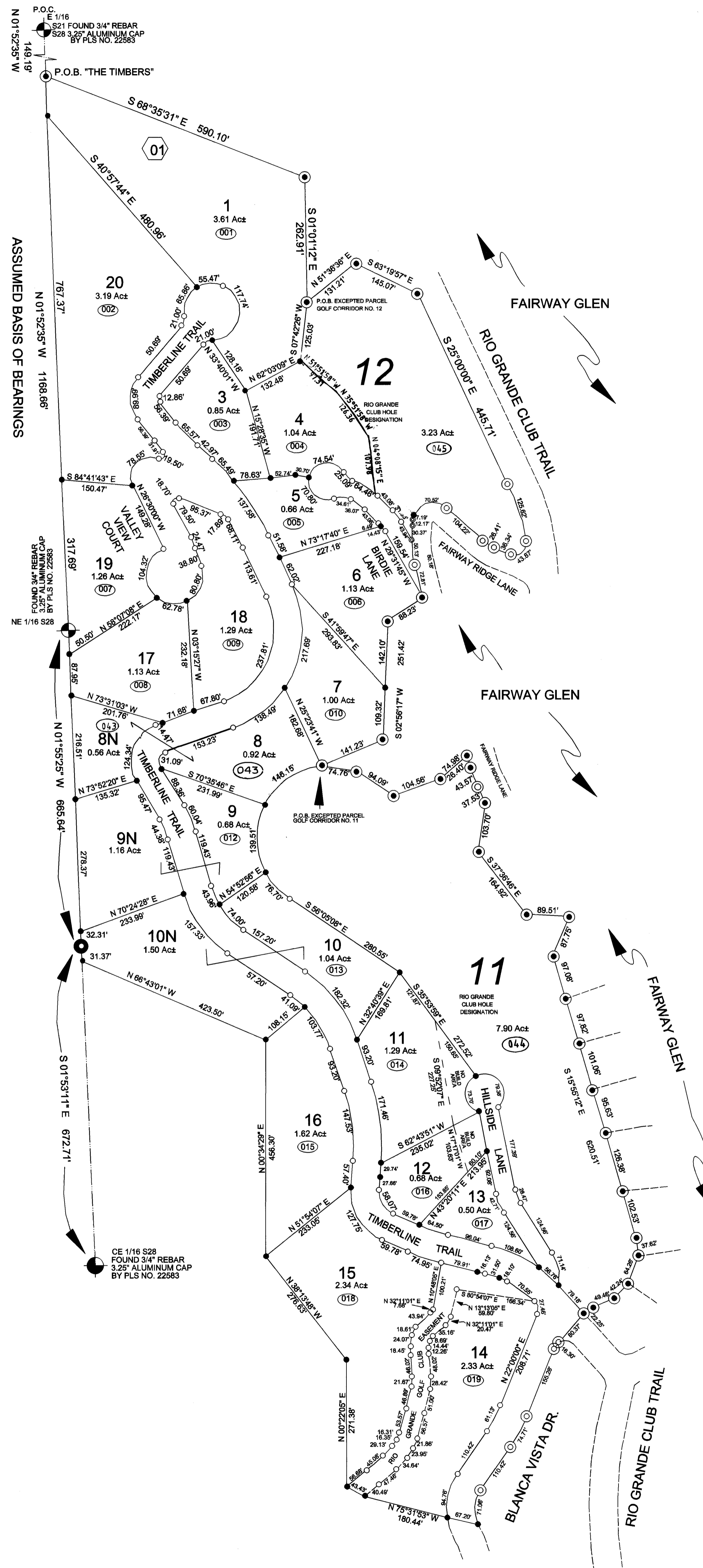
NOTICE

THIS MAP IS FOR ASSESSMENT PURPOSES ONLY. IT IS NOT NECESSARILY ACCURATE BY SURVEYING STANDARDS. DO NOT USE FOR LEGAL CONVEYANCE.



Original Drawing by:  
Shy Surveyors & Assoc.  
P.O. Box 1280  
Westcliffe, Colorado 81252

Update By:  
San Luis Valley GIS/GPS Authority  
419 San Juan Ave.  
Alamosa, Colorado 81101  
719-589-6099



LEGEND

- ALIQUOT MONUMENT AS NOTED
- FOUND 1/2" REBAR WITH 2.5" RED PLASTIC CAP BY COLO. PLS # 19883
- FOUND 1/2" REBAR WITH 1" YELLOW PLASTIC CAP BY COLO. PLS # 19883
- SET 1/2" REBAR WITH 2.5" RED PLASTIC CAP BY COLO. PLS # 19883
- SET 1/2" REBAR WITH 1" YELLOW PLASTIC CAP BY COLO. PLS # 19883
- FOUND 1/2" REBAR WITH RED PLASTIC CAP BY COLO. PLS # 19883
- #N INDICATES A NO-BUILD LOT TO BE CONNECTED BY OWNERSHIP TO THE CORRESPONDING LOT NUMBER
- BOUNDARY LINE
- LOT LINES
- ALIQUOT LINES AND/OR TIE LINES
- ROAD SIDELINES AND/OR EASEMENT LINES

21-281  
SOUTH FORK RANCHES  
THE TIMBERS

Fr NE<sup>4</sup> Fr SE<sup>4</sup> Sec 28 T40N R3E  
DR 11 MAP 176

REPLAT DR.11 MAP 297