

21-284-01

Fr SE1/4 Section 28
T40N R3E, N.M.P.M.
SOUTH FORK RANCHES,
THE RIDGE, FILING No. 1
Dr. 11, Map 233

RIO GRANDE COUNTY

DRAWN BY	A.W.M.	DATE	04/27/06
CHECKED BY		DATE	
REVISED			
Date	By	Remarks	
12-17-07	ES		
11-16-12	ES		

R. 3 E.				R. 8 E.	
21	19	17	15	13	11
23	27	29	31	33	35
49	47	45	43	41	39
51	53	55	57	59	61
63					

COUNTY INDEX

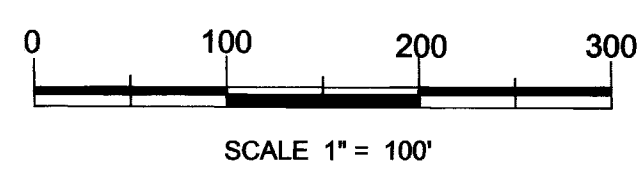
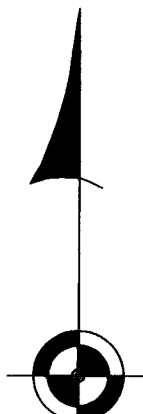
6	5	4	3	2	1
7	8	9	10	11	12
18	17	16	15	14	13
19	20	21	22	23	24
30	29	28	27	26	25
31	32	33	34	35	36

TOWNSHIP INDEX

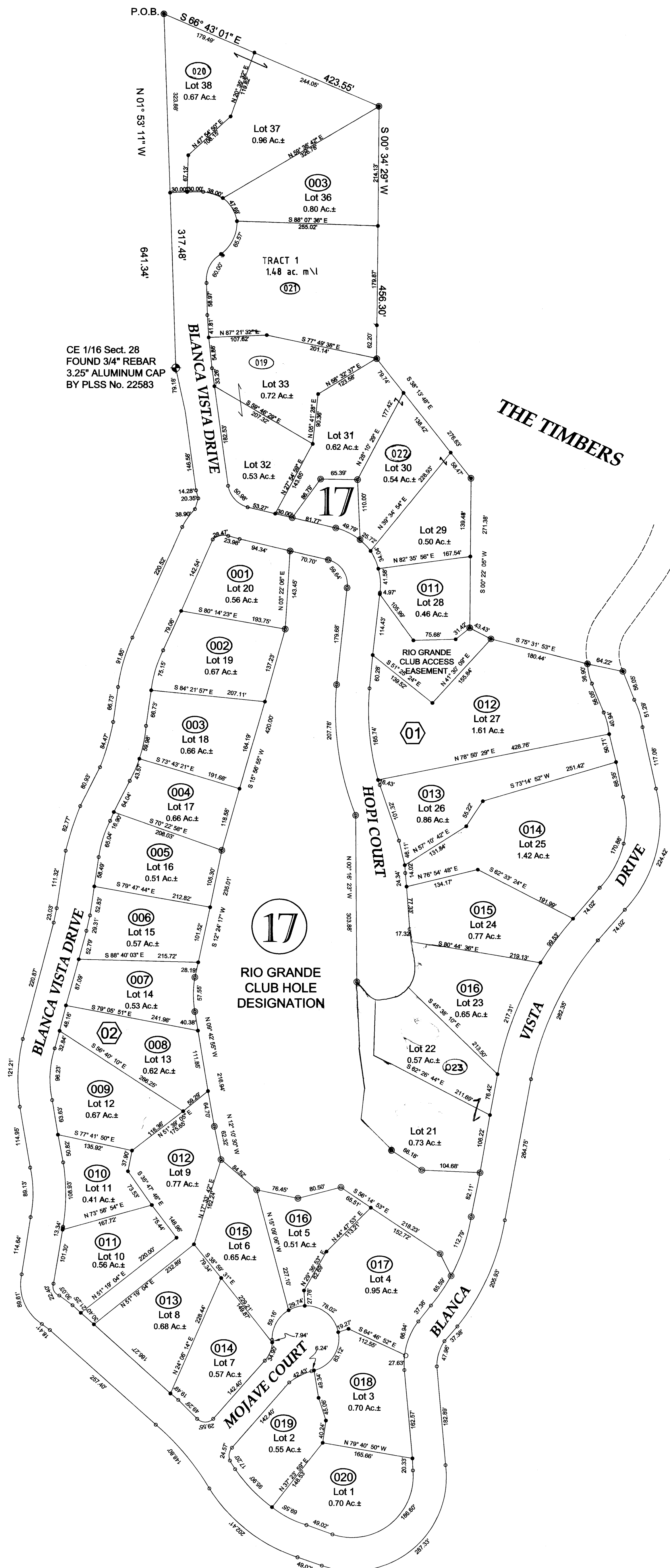
NOTICE

THIS MAP IS FOR ASSESSMENT PURPOSES ONLY. IT IS NOT NECESSARILY ACCURATE BY SURVEYING STANDARDS. DO NOT USE FOR LEGAL CONVEYANCE.

N



San Luis Valley GIS/GPS Authority
419 San Juan Ave.
Alamosa, Colorado 81101
719-587-0286
www.slvgis.info



Legend

- Aliquot Monument as noted
- Found 1/2" rebar with 2.5" red plastic cap by Colo. PLS # 19883 (from a previous survey).
- Found 1/2" rebar with 1" yellow plastic cap by Colo. PLS # 19883 (from a previous survey).
- Set 1/2" rebar with 2.5" red plastic cap by Colo. PLS # 19883.
- Set 1/2" rebar with 1" yellow plastic cap by Colo. PLS # 19883.

21-284-01
Fr SE1/4 Section 28
T40N R3E, N.M.P.M.
SOUTH FORK RANCHES,
THE RIDGE, FILING No. 1
Dr. 11, Map 233