

21-284-02  
 Fr SE 1/4 Section 28  
 T40N R3E, N.M.P.M.  
**SOUTH FORK RANCHES,  
 THE RIDGE, FILING No. 2**  
 Dr. 11, Map 274  
**RIO GRANDE COUNTY**

DRAWN BY	A.W.M.	DATE	5/8/06
CHECKED BY		DATE	
REVISED			
Date	By	Remarks	

R 3 E				R 4 E	
T 41 N	9	19	17	15	11
	21	27	29	31	35
	23	25	26	33	37
	49	47	43	41	39
T 37 N	51	53	55	57	63

COUNTY INDEX

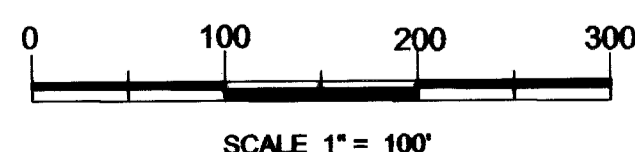
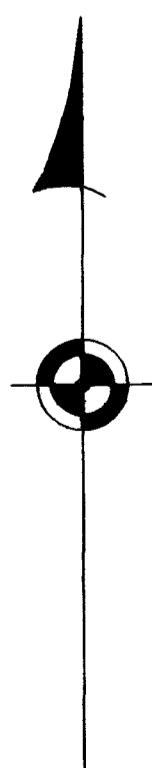
6	5	4	3	2	1
7	8	9	10	11	12
18	17	16	15	14	13
19	20	21	22	23	24
30	29	28	27	26	25
31	32	33	34	35	36

TOWNSHIP INDEX

**NOTICE**

THIS MAP IS FOR ASSESSMENT PURPOSES ONLY. IT IS NOT NECESSARILY ACCURATE BY SURVEYING STANDARDS. DO NOT USE FOR LEGAL CONVEYANCE.

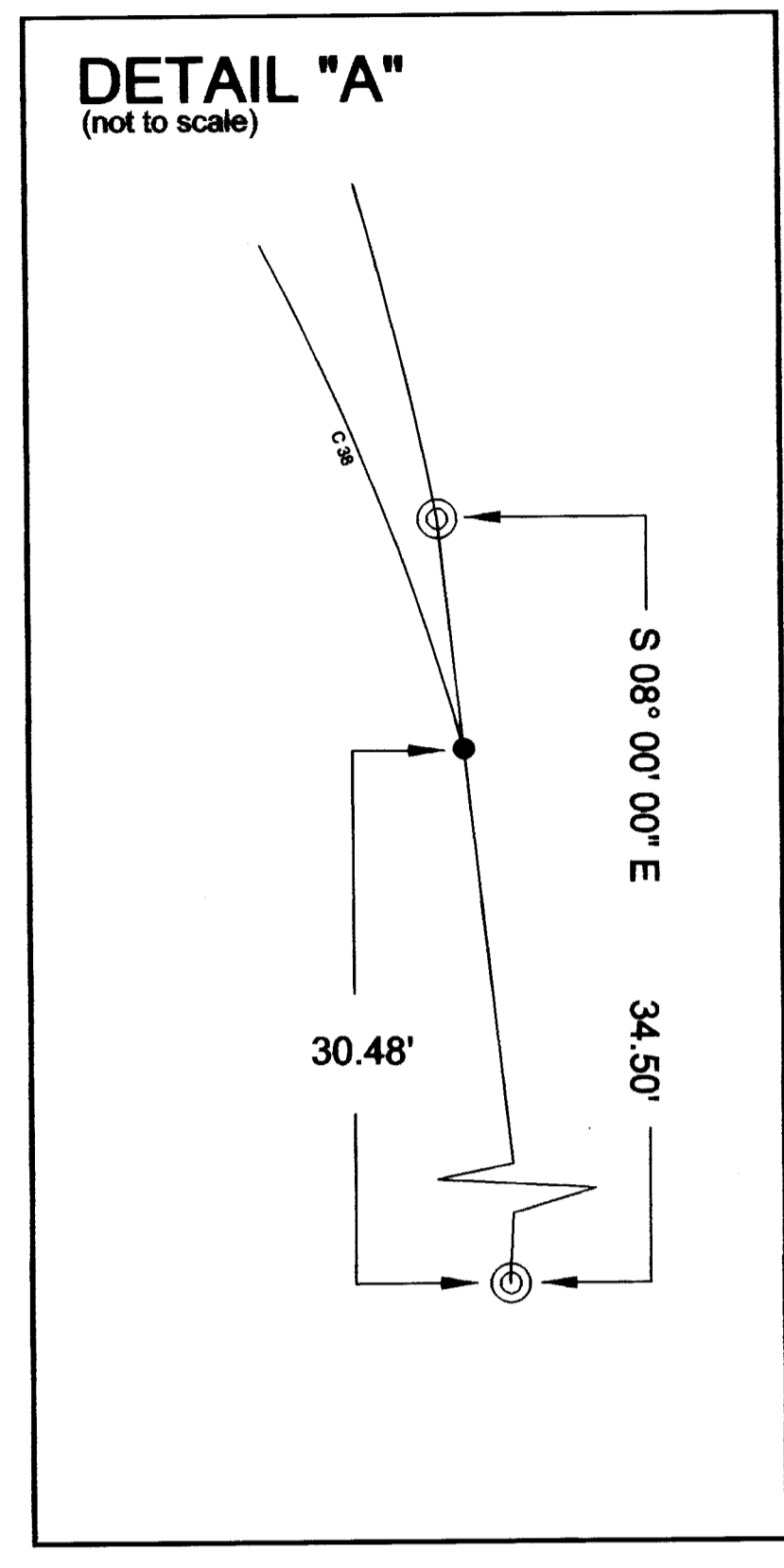
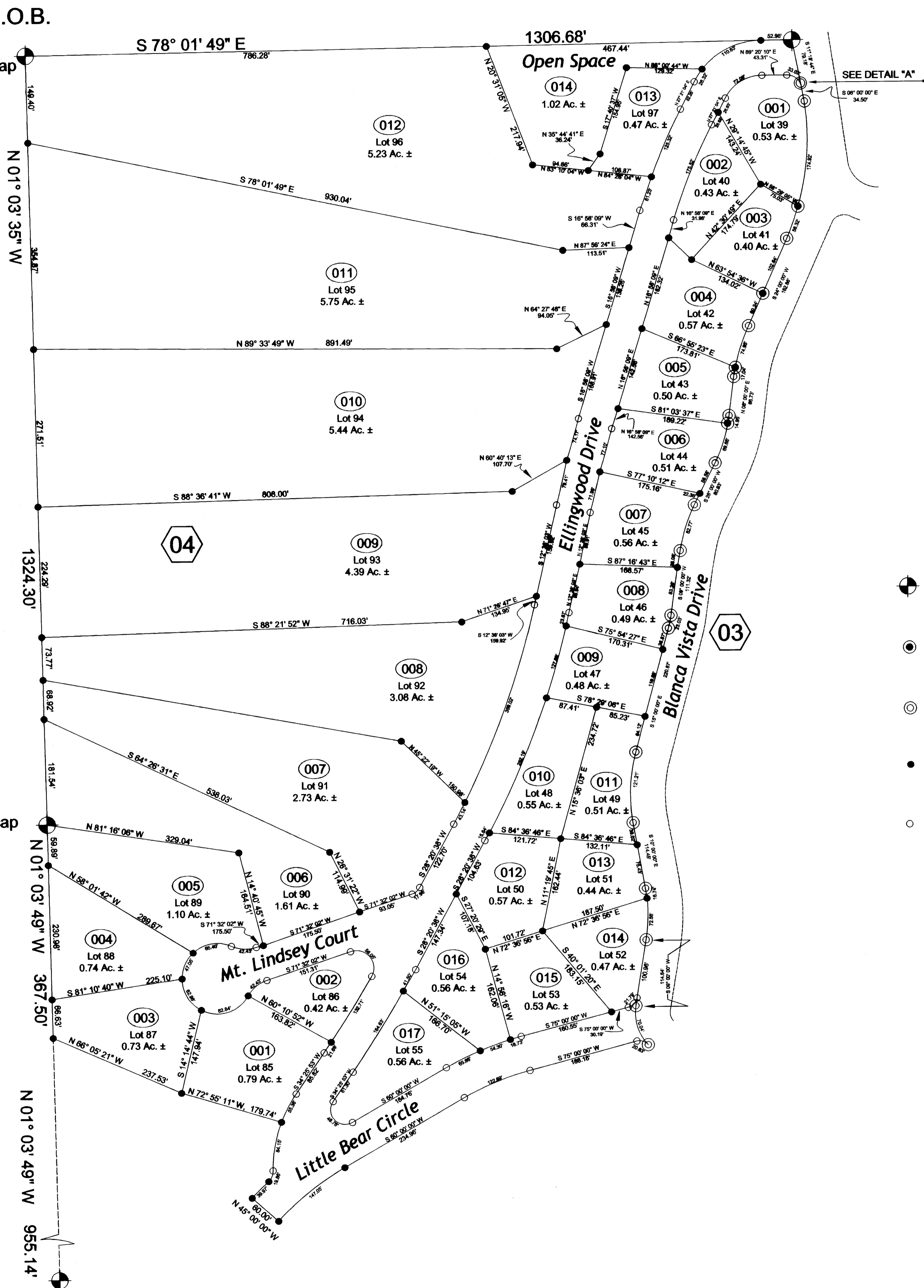
N



C 1/4 S28  
 Found 3/4" rebar  
 3.25" Aluminum cap  
 by PLS # 22583

CS 1/16 S28  
 Found 3/4" rebar  
 3.25" Aluminum cap  
 by PLS # 22583

Found U.S. B.L.M.  
 Brass cap \*1958"



**Legend**

- Aliquot Monument as noted
- Found 1/2" rebar with 1" yellow plastic cap by Colo. PLS # 19883 (from a previous survey). Replaced cap with a 2.5" red plastic cap by Colo. PLS # 19883.
- Found 1/2" rebar with 1" yellow plastic cap by Colo. PLS # 19883 (from a previous survey).
- Set 1/2" rebar with 2.5" red plastic cap by Colo. PLS # 19883.
- Set 1/2" rebar with 1" yellow plastic cap by Colo. PLS # 19883.

21-284-02  
 Fr SE 1/4 Section 28  
 T40N R3E, N.M.P.M.  
**SOUTH FORK RANCHES,  
 THE RIDGE, FILING No. 2**