

# RIO GRANDE COUNTY

DRAWN BY A.O.D. DATE 1972-3			
CHECKED BY C.J.M. DATE 1972-3			
REVISED			
Date	By	Remarks	Center Quarter
9-14-74	AL	1-30-76 ES	Co. Sec. 29
5-6-76	AL	12-29-76 ES	T. 40N., R. 3E.
7-31-75	P.W.	12-13-75 ES	N.W. 1/4
7-27-78	EB	11-16-78 ES	Brass cap.
5-12-81	EB		
1-11-82	EB		
12-14-84	B.D.		
1-1-87	B.P.		
2-7-89	D.M.		
8-1-90	D.M.		
1-6-91	D.M.		
0115-96	D.M.		
0205-98	D.M.		

T. 39 N.			R. 3 E.		
09	19	17	15	13	11
21	27	29	31	33	35
49	47	45	41	39	37
51	53	55	59	61	63
T. 37 N.			R. 3 E.		

COUNTY INDEX

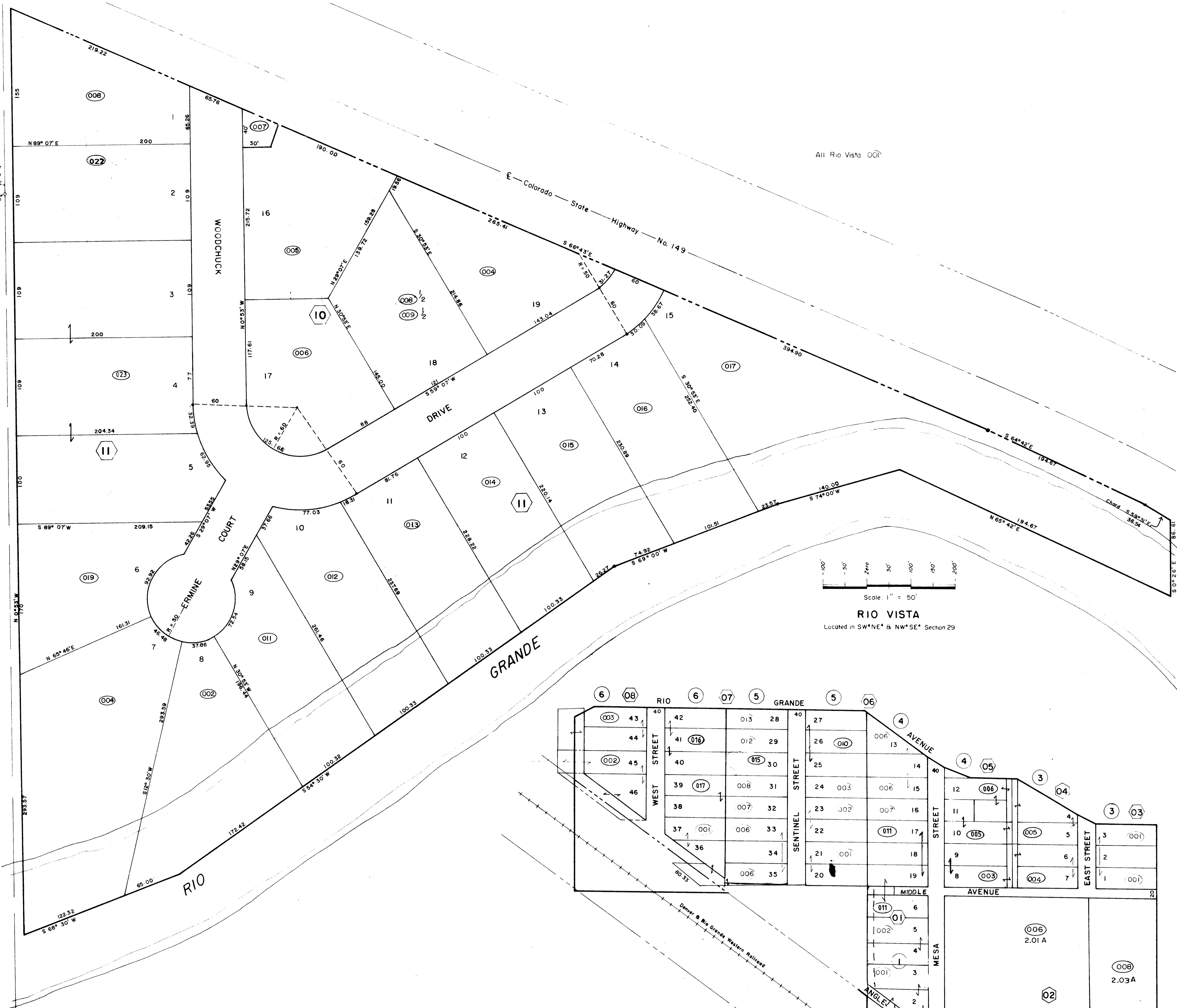
T. 40 N.					
6	5	4	3	2	1
7	8	9	10	11	12
O7A					
18	17	16	15	14	13
19	20	21	22	23	24
30	28	27	26	25	
O7C					
31	32	33	34	35	36
T. 38 N.					

TOWNSHIP INDEX

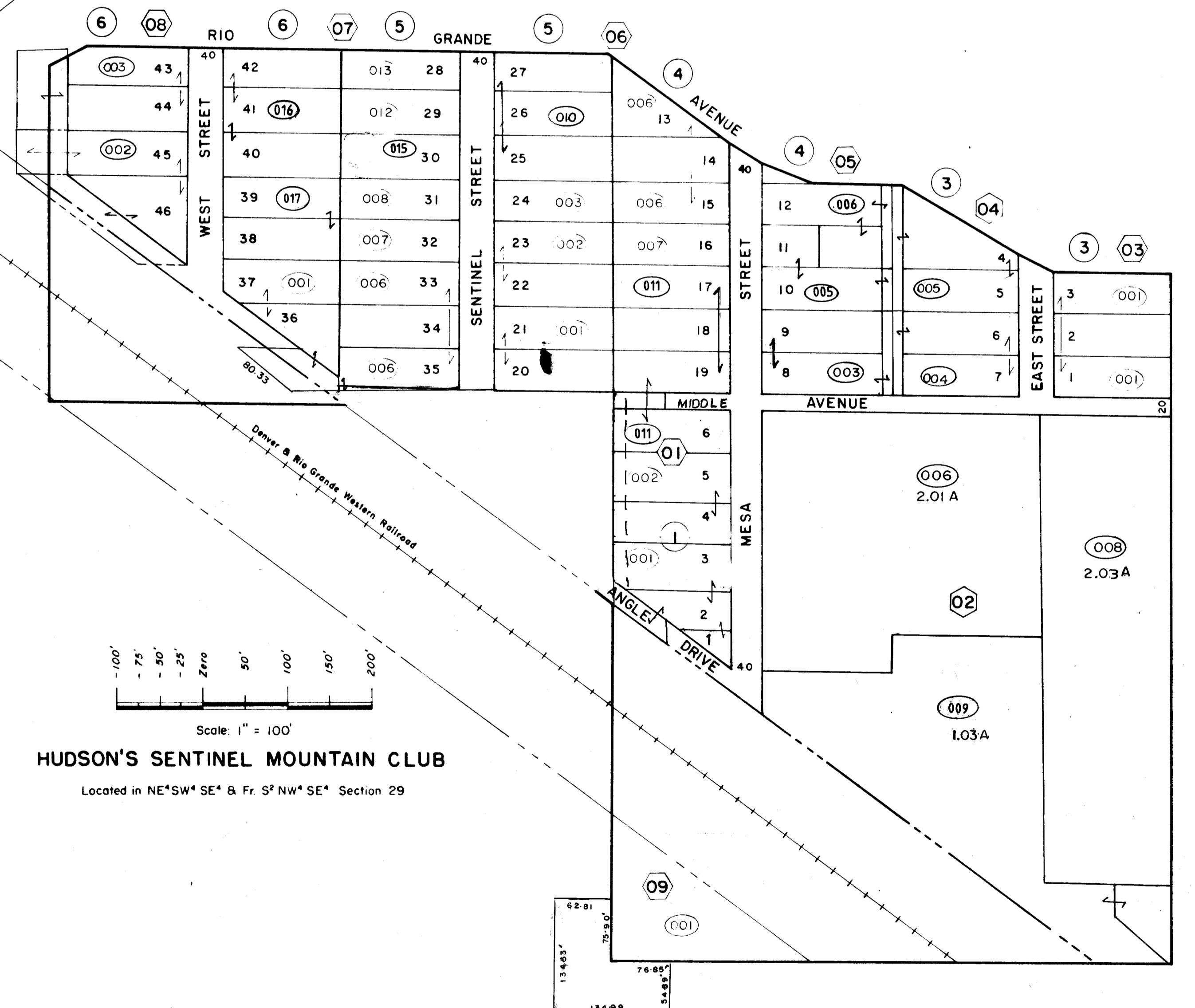


SCALES AS NOTED

DAVIS ENGINEERING INC. P.C. INC.  
P. O. BOX 67 - 376 SPRUCE ST.  
DEL NORTE, COLORADO 81132



For more detail see plats on file in the office of the County Clerk and Recorder.



HUDSON'S SENTINEL MOUNTAIN CLUB  
Located in NE\*SW\* SE\* & Fr. S\* NW\* SE\* Section 29

THIS MAP FOR ASSESSMENT  
PURPOSES ONLY NOT INTENDED  
TO BE USED FOR LEGAL PURPOSES