

RIO GRANDE COUNTY

DRAWN BY A.O.D. DATE 1972-3  
 CHECKED BY C.J.M. DATE 1972-3  
 REVISED

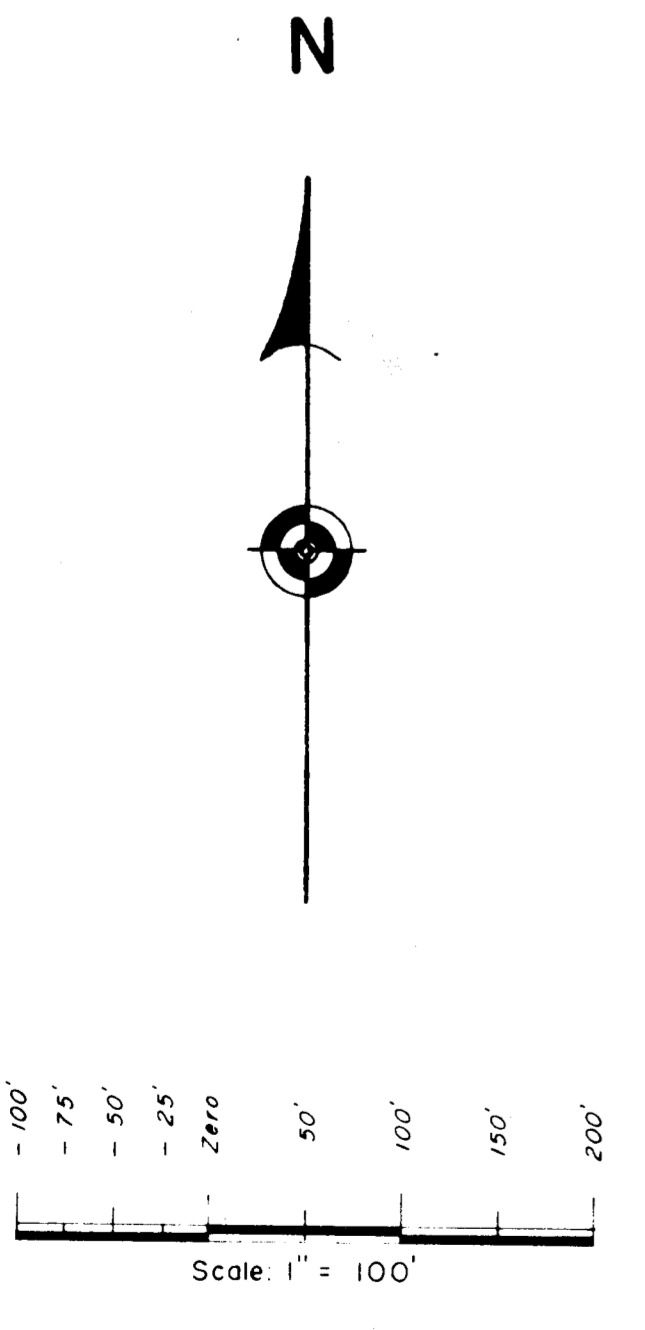
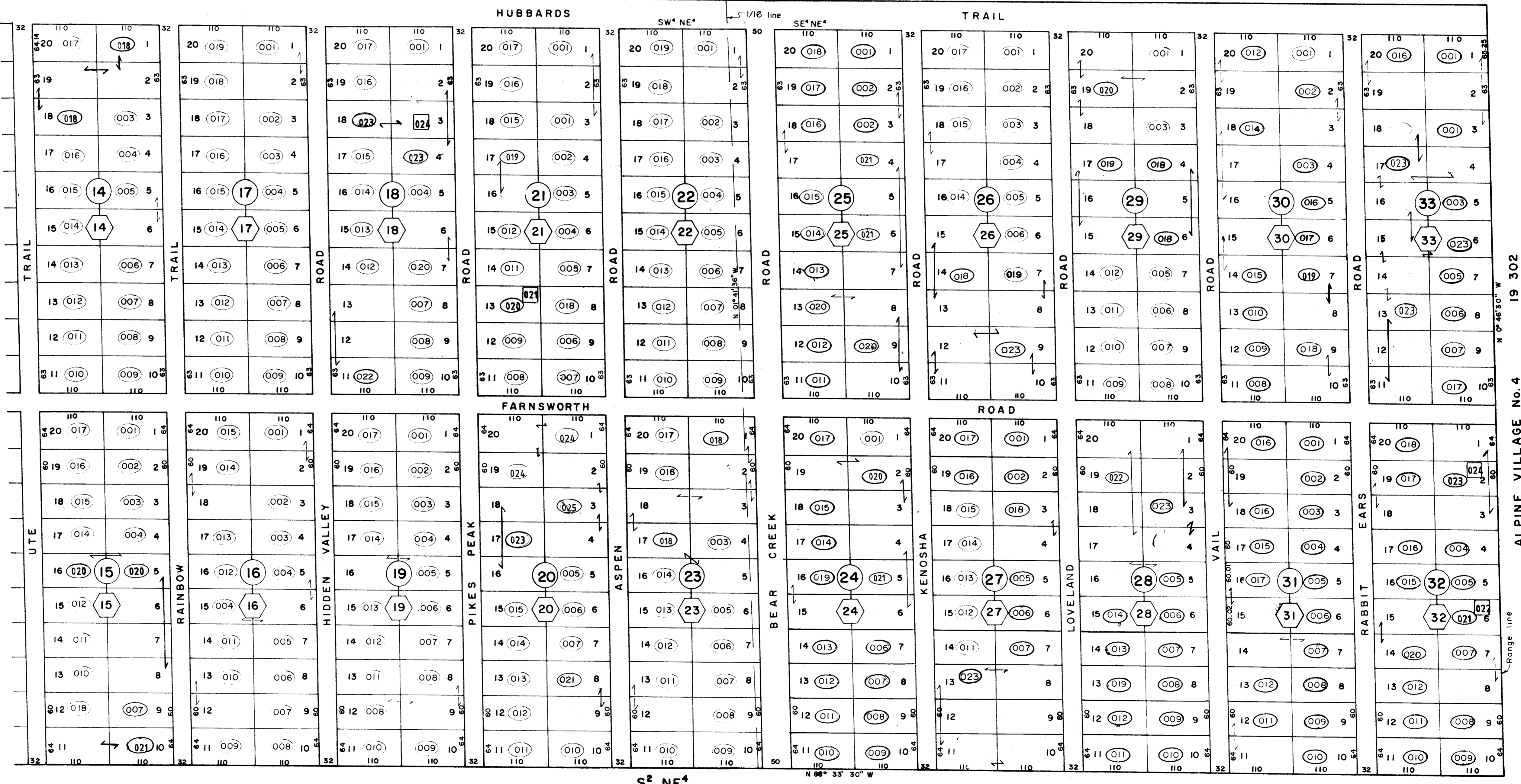
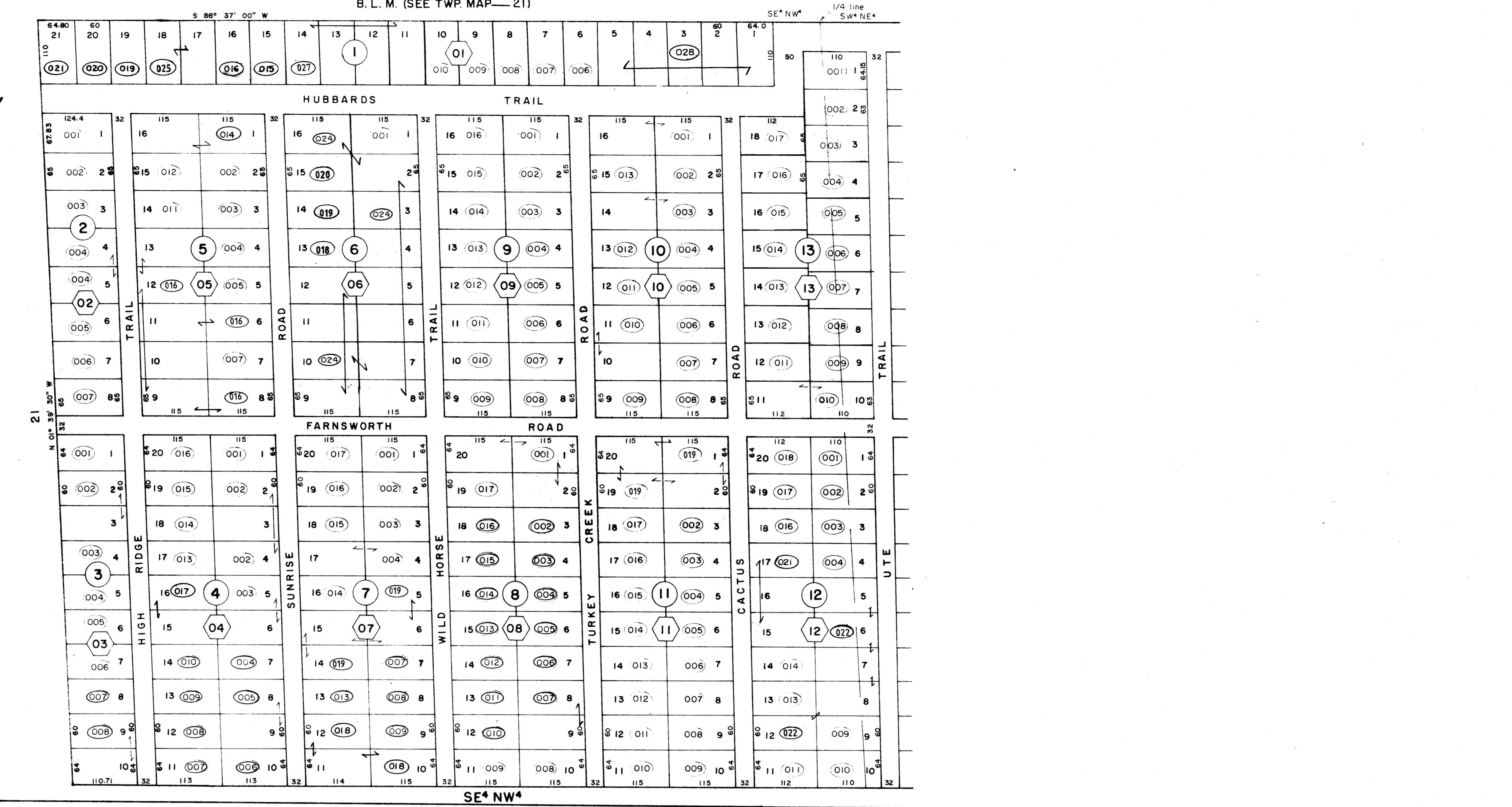
Date	By	Remarks
3-19-71	J.L.	1.6-9.4 DM 01-05-18 ES
8-11-75	P.W.	12-22-94 DM 12-28-18 ES
8-12-78	E.B.	02-14-97 DM 12-13-11 ES
9-12-77	EB	01-02-98 DM 11-14-12 ES
7-27-78	EB	01-05-99 W.M. 09-23-14 ES
3-11-80	EB	01-08-99 W.M. 09-23-14 ES
1-19-81	EB	01-08-99 W.M. 09-23-14 ES
1-26-84	EB	01-08-99 W.M. 09-23-14 ES
1-9-87	EB	01-08-99 W.M. 09-23-14 ES
2-2-88	EB	01-08-99 W.M. 09-23-14 ES
7-24-90	DM	01-17-05 2-23-22 MS
1-29-92	DM	01-30-06 ES 12-21-22 MS
1-12-93	DM	12-14-07 ES

19	17	15	13	11
25	27	29	31	33
49	47	45	43	41
51	53	55	57	59

COUNTY INDEX

6	5	4	3	2	1
7	8	9	10	11	12
18	17	16	15	14	13
19	20	21	22	23	24
30	29	28	27	26	25
31	32	33	34	35	36

TOWNSHIP INDEX



DAVIS ENGINEERING SERVICE, INC.  
 P. O. BOX 47 - 576 SPRUCE ST.  
 DEL NORTE, COLORADO 81132

For more detail see plat on file in the office of the County Clerk and Recorder.

ALPINE VILLAGE No. 2  
 S<sup>2</sup>NE<sup>4</sup> & SE<sup>4</sup>NW<sup>4</sup> Sec. 25  
 T. 40 N., R. 3 E.

THIS MAP FOR ASSESSMENT PURPOSES ONLY NOT INTENDED TO BE USED FOR LEGAL PURPOSES