

(A) ALPINE VILLAGE No. 8
(B) ALPINE VILLAGE No. 6
FR. Sec. 25 (SEE DESC.)
T. 40 N., R. 3 E.

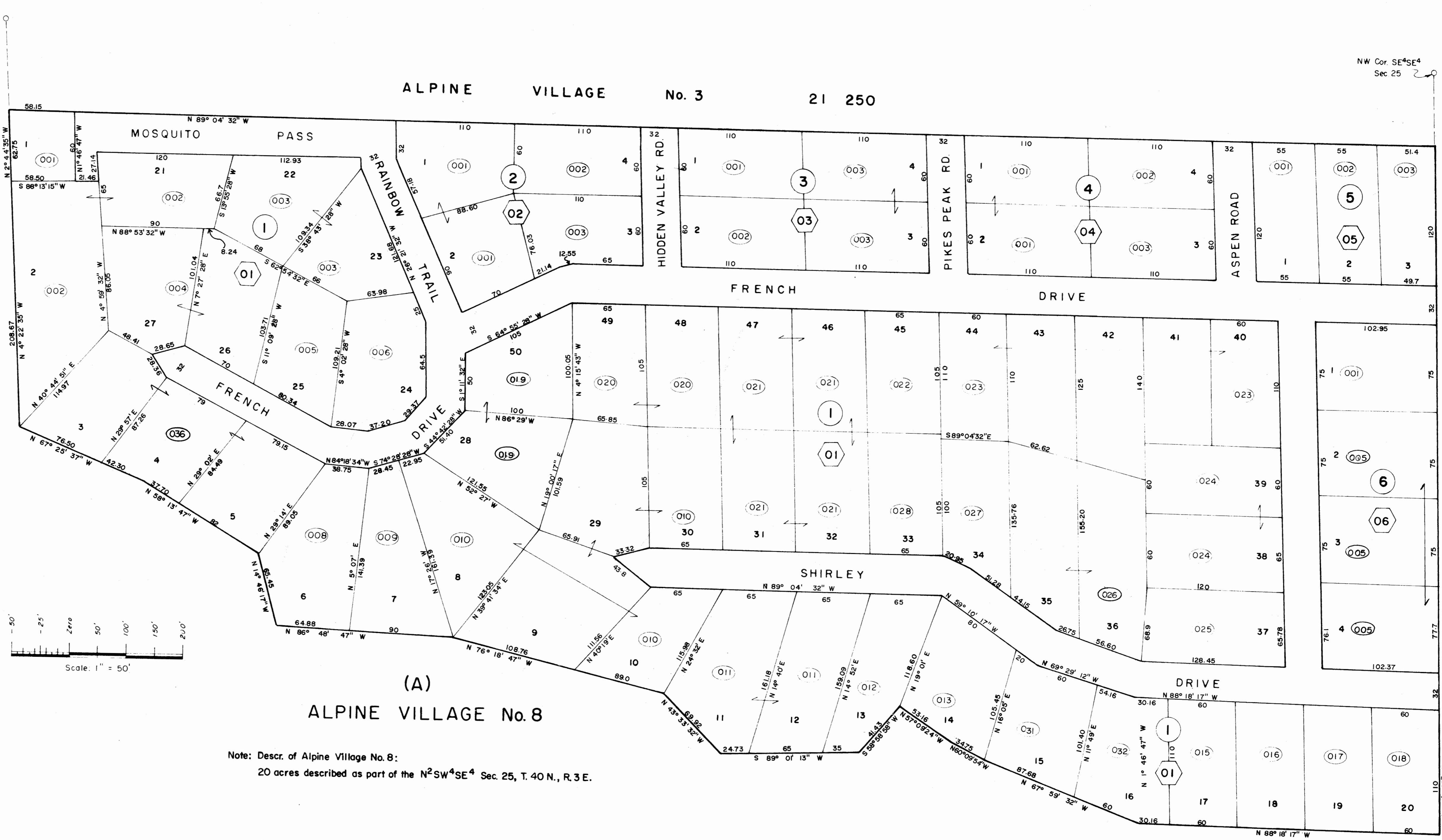
RIO GRANDE COUNTY

DRAWN BY AOD DATE 1/72 3
CHECKED BY C.J.M. DATE 1972-3

Date	By	Remarks
9-14-74	at	0214-97 DM
3-20-75	P.L.S.	010698 DM
8-12-76	E.B.	01-30-01 DA
9-12-77	E.B.	01-11-01 DA
7-27-78	E.B.	1-30-06 ES
3-11-80	E.B.	12-14-07 ES
2-9-84	E.B.	12-29-10 ES
12-14-84	B.D.	12-13-11 ES
1-9-87	E.B.	01-03-14 ES
2-9-88	E.B.	89-11-14 ES
2-7-89	D.M.	1-25-18 MS
8-1-89	D.M.	1-12-21 CF
04-5-98	D.M.	12-23-22 CF

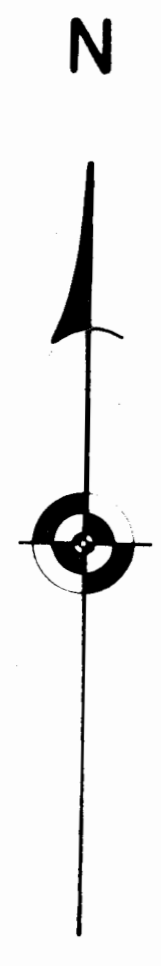
T. 41 N.		R. 3 E.	
09	10	11	12
19	20	21	22
29	30	31	32
39	40	41	42
49	50	51	52
59	60	61	62
69	70	71	72
79	80	81	82
89	90	91	92
99	100	101	102

COUNTY INDEX



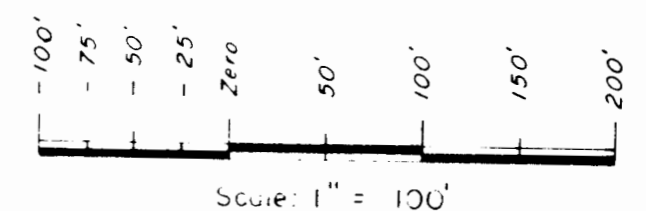
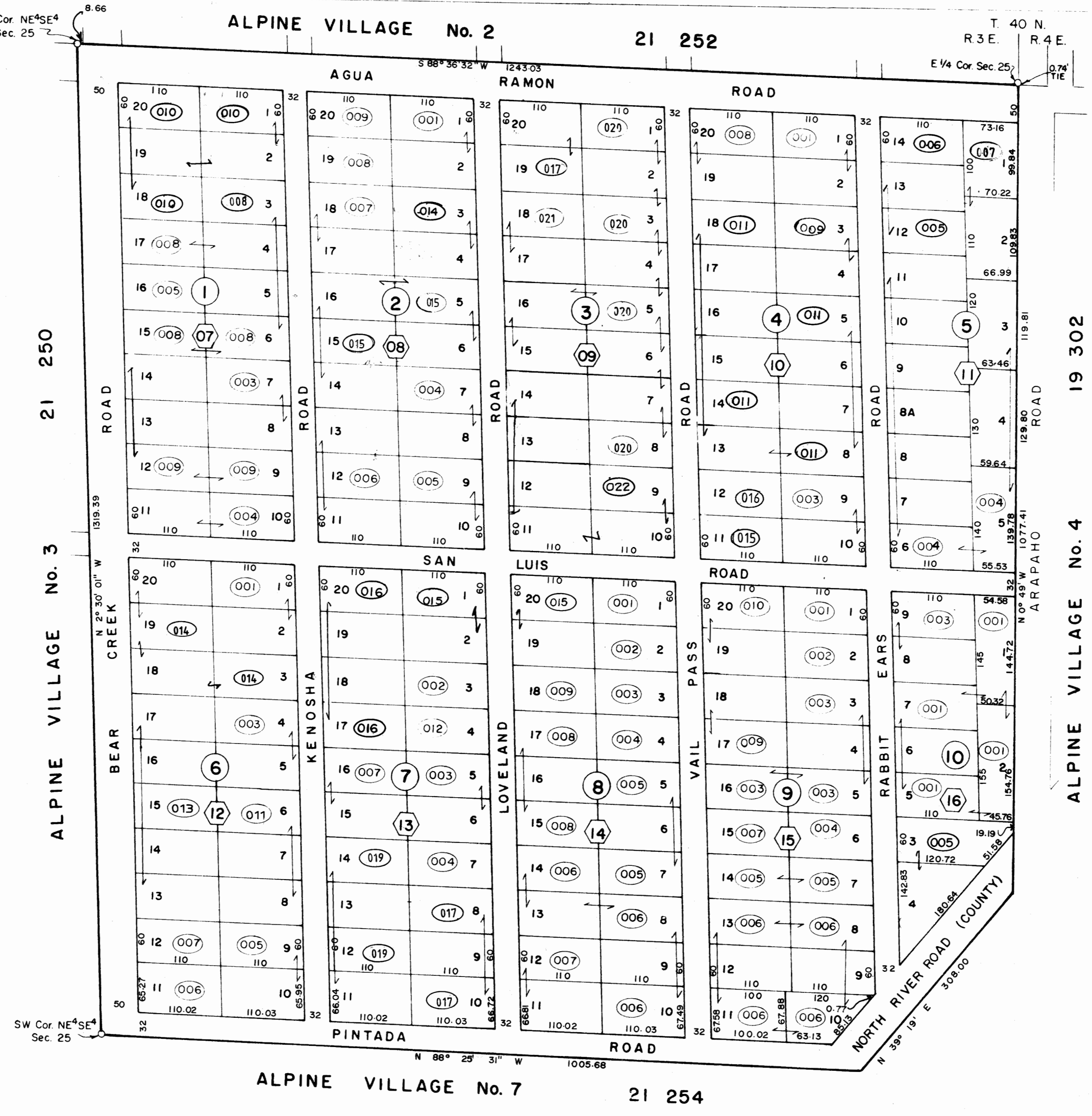
6	5	4	3	2	1
7	8	9	10	11	12
18	17	16	15	14	13
19	20	21	22	23	24
30	29	28	27	26	25
31	32	33	34	35	36

TOWNSHIP INDEX



SCALES AS NOTED

DAVIS ENGINEERING SEA-HELL, INC.
P. O. BOX 67 - 576 SPRUCE ST.
DIX, NORTE, COLORADO 81132



THIS MAP FOR ASSESSMENT PURPOSES ONLY NOT INTENDED TO BE USED FOR LEGAL PURPOSES