

23 033 - 03  
 BEAVER MOUNTAIN ESTATES,  
 PHASE 3, FILING No. 1,  
 Tract 43, Sec. 3, T.39N, R.3E,  
 N.M.P.M.

RIO GRANDE COUNTY

DRAWN BY	J.A.M.	DATE	Jan 05
CHECKED BY	D.A.	DATE	Feb 05
REVISED			
Date	By	Remarks	
02-2004	JM		
01-2014	ES		
1-25-16	MS		

			R.3E		
T.41N	9				
	21	19	17	15	13
	23	27	29	31	33
	49	47	45	43	41
	51	53	55	57	59
T.37N					

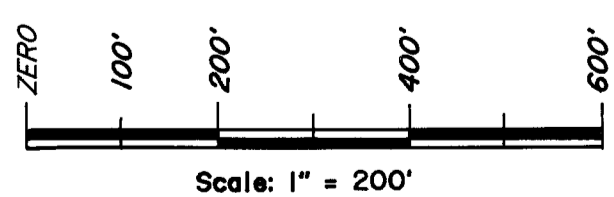
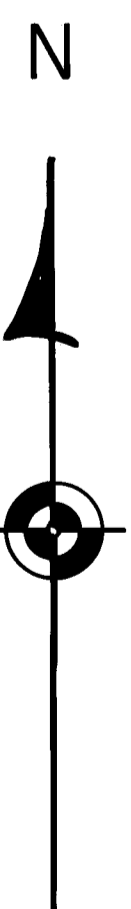
COUNTY INDEX

6	5	4	3	2	1
7	8	9	10	11	12
18	17	16	15	14	13
19	20	21	22	23	24
30	29	28	27	26	25
31	32	33	34	35	36

TOWNSHIP INDEX

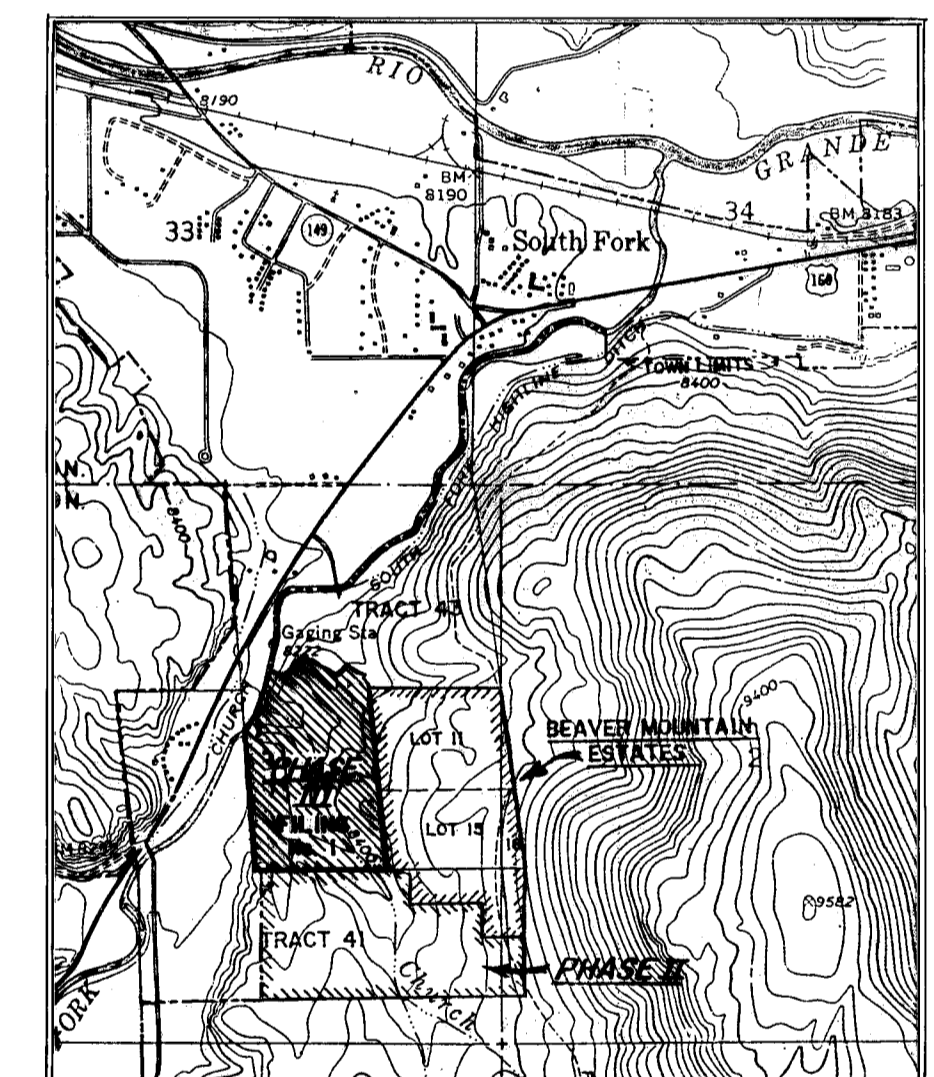
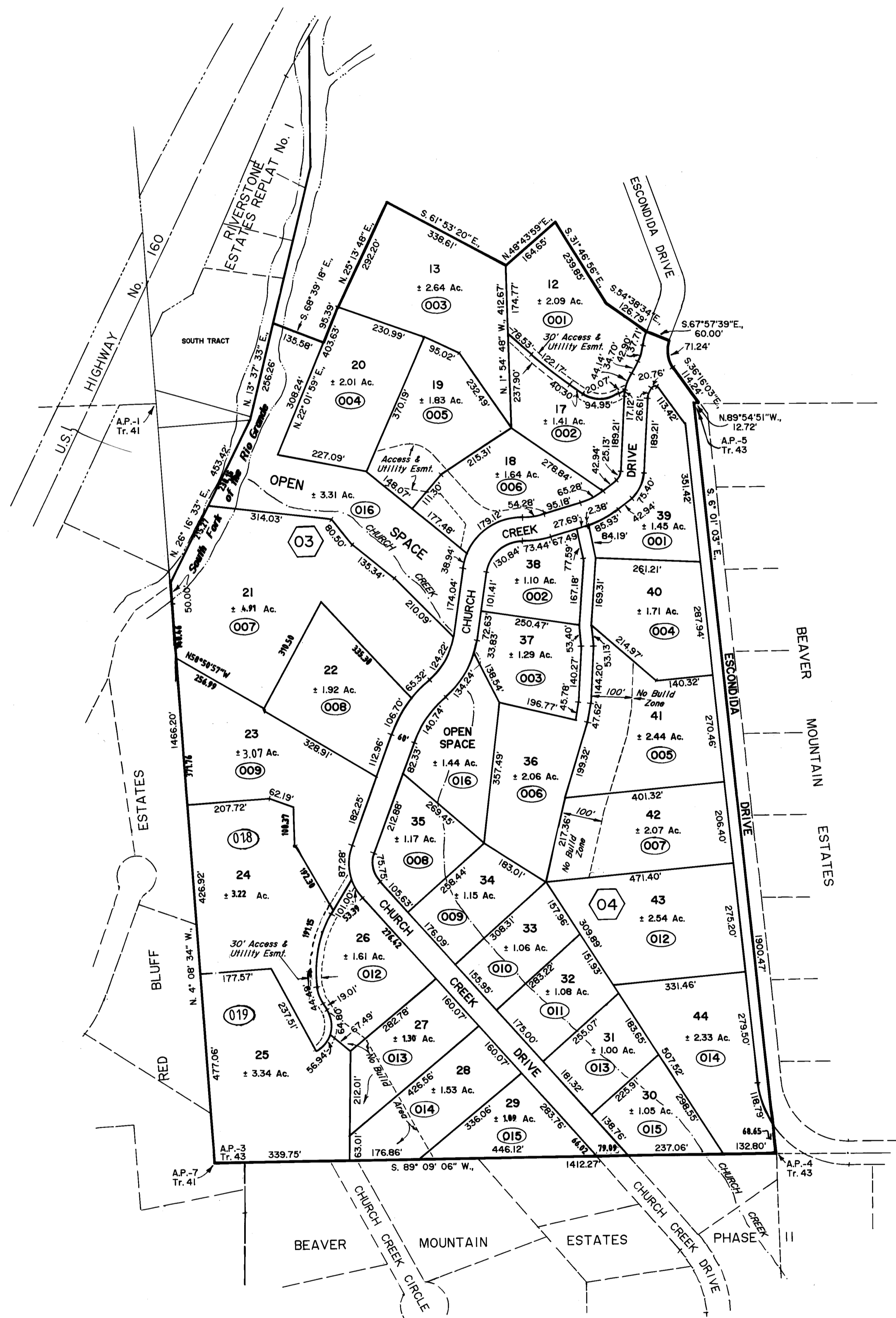
NOTICE

THIS MAP IS FOR ASSESSMENT PURPOSES ONLY. IT IS NOT NECESSARILY ACCURATE BY SURVEYING STANDARDS. DO NOT USE FOR LEGAL CONVEYANCE.



Scale: 1" = 200'

Davis Engineering Service, Inc.  
 1314 11th Street  
 Alamosa, Colorado 81101



VICINITY MAP  
 SCALE: 1" = 2000'

PROTECTIVE COVENANTS

THE DEED RESTRICTIONS, PROTECTIVE COVENANTS AND DEFINITIONS OF OPEN SPACE, WHICH APPLY TO THE TRACTS OF BEAVER MOUNTAIN ESTATES, PHASE 3, FILING No. 1, ARE RECORDED UNDER RECEPTION No. 385597 IN BOOK 517 AT PAGE 1630. IN THE RECORDS OF THE RIO GRANDE COUNTY CLERK AND RECORDER.

23 033 - 03

BEAVER MOUNTAIN ESTATES,  
 PHASE 3, FILING No. 1

Frac. Tract 43, Section 3, Independent Resurvey  
 of T. 39 N., R. 3 E., N.M.P.M.  
 Amended Plat of Portion of Beaver Mountain Estates  
 Phase 3, Filing No. 1

Drawer 11, Map 227  
 Drawer 11, Map 236