

29 320
 PINOS ACRES, YUND SUBDIVISION,
 HIDDEN VALLEY ESTATES
 T. 38 N., R. 5 E. and T. 39 N., R. 5 E.

RIO GRANDE COUNTY

DRAWN BY AOD LATE 1972-3
 CHECKED BY CVM DATE 1972-3
 REVISED

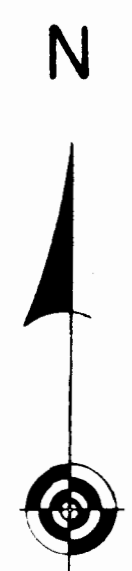
Date	By	Remarks
6-16-74	JL	8-6-90 DM
5-7-75	JL	12-21-90 DM
7-11-75	PLS	12-23-92 DM
8-13-76	EB	1-3-95 DM
9-14-77	EB	02-20-97 DM
8-1-78	EB	2-9-98 DM
3-17-80	EB	2-10-99 DA
1-13-82	EB	01-31-01 DA
2-2-83	EB	01-13-05 DA
2-9-84	EB	12-31-10 CL
12-21-84	ED	01-07-14 ES
1-14-87	EB	3-1-22 MS
3-1-88	EB	

09					
21	19	17	15	13	11
23	25	27	29	31	33
49	47	45	43	41	39
51	53	55	57	59	61

COUNTY INDEX

6	5	4	3	2	1
7	8	9	10	11	12
18	17	16	15	14	13
19	20	21	22	23	24
30	29	28	27	26	25
31	32	33	34	35	36

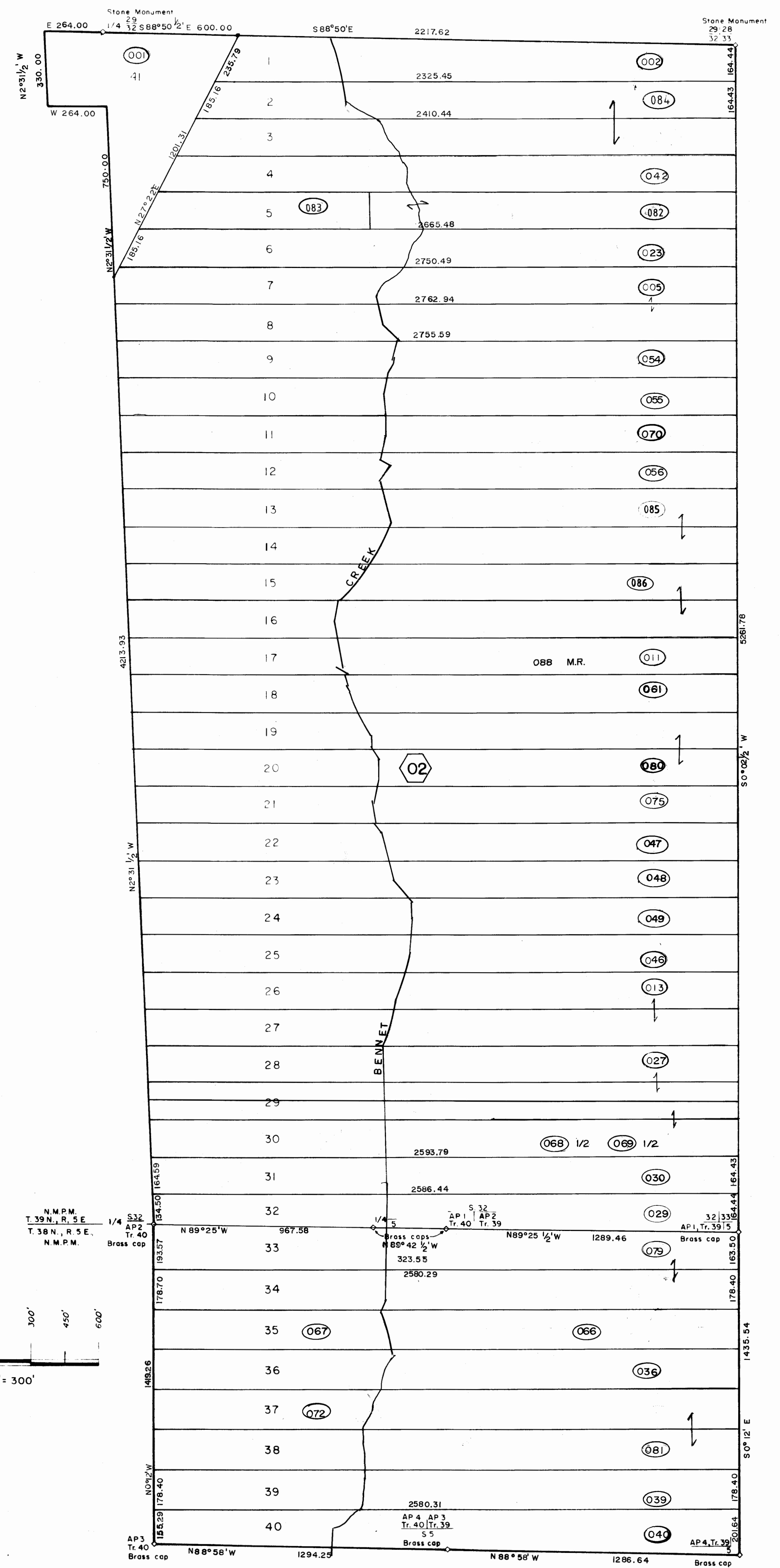
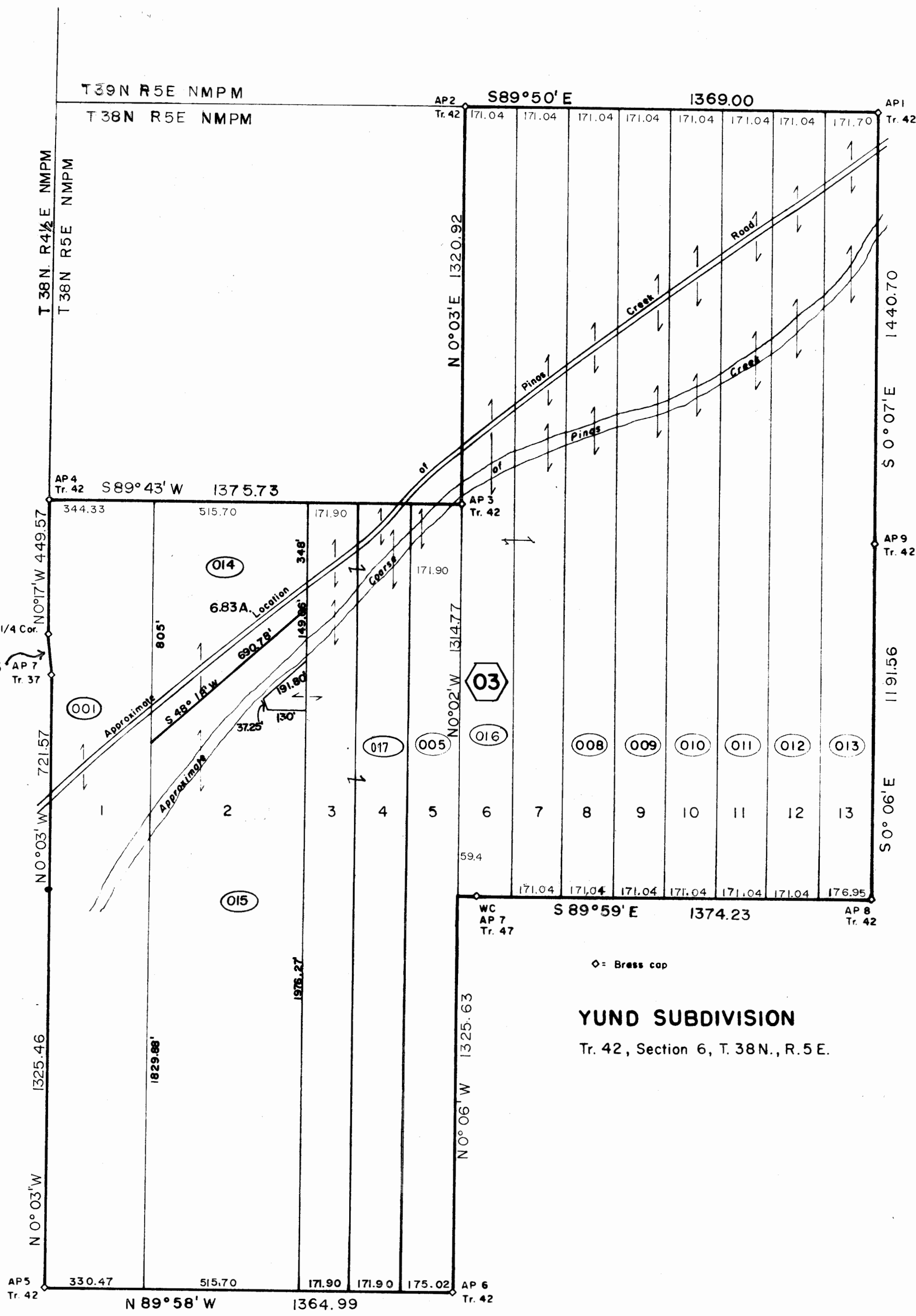
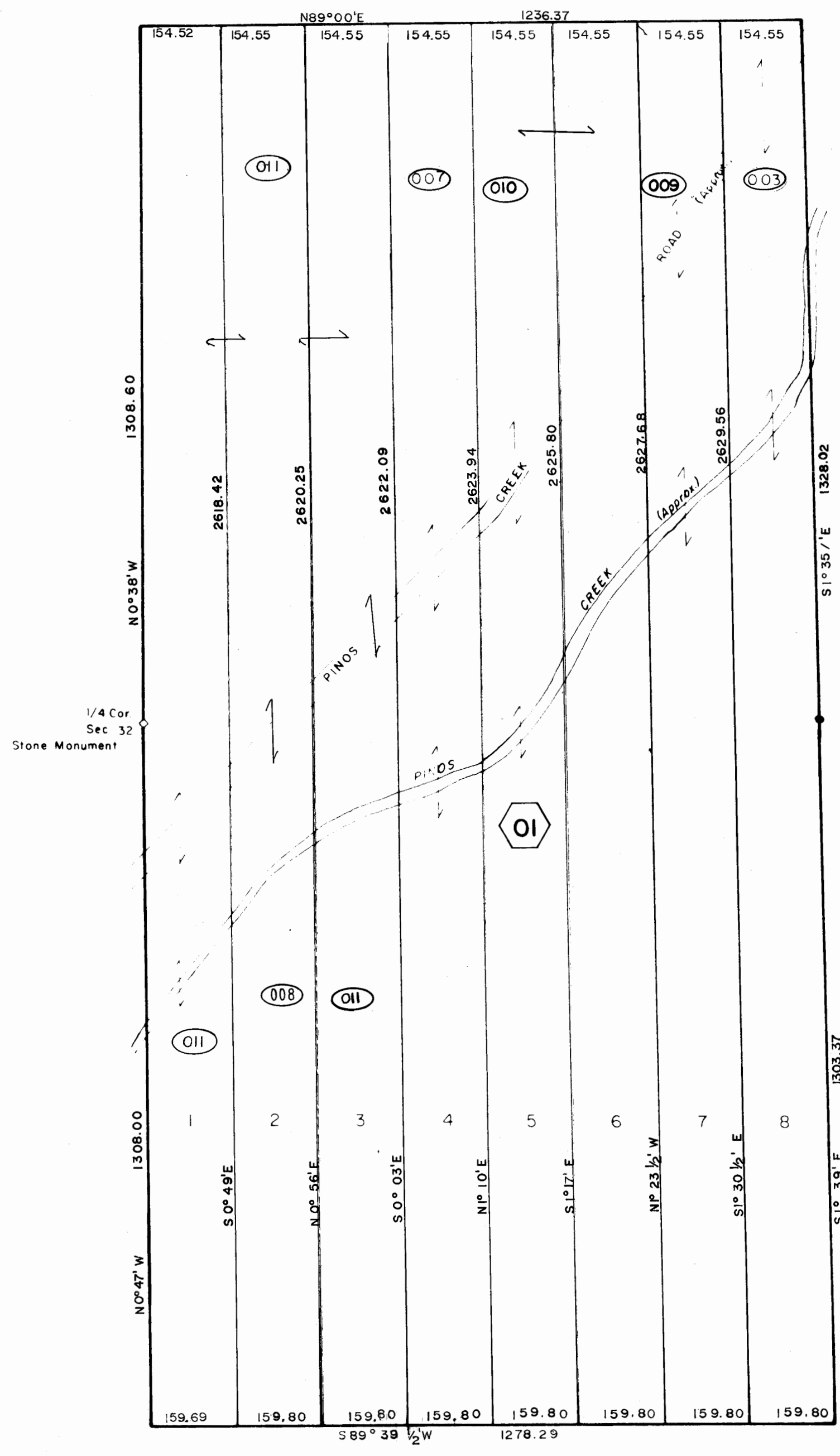
TOWNSHIP INDEX



SCALES AS NOTED

For more detail see plots on file in the office of the County Clerk and Recorder.

DAVIS ENGINEERING SERVICE, INC.
 P. O. BOX 67 - 576 SPRUCE ST.
 DEL NORTE, COLORADO 81132



Note: Arbitrary Block numbers are in ascending order.
 Township, Range and Section will correspond to actual location.

THIS MAP FOR ASSESSMENT
 PURPOSES ONLY NOT INTENDED
 TO BE USED FOR LEGAL PURPOSES

43 062 29 320

**PINOS ACRES, YUND SUBDIVISION,
 HIDDEN VALLEY ESTATES**

T. 38 N., R. 5 E. and T. 39 N., R. 5 E.