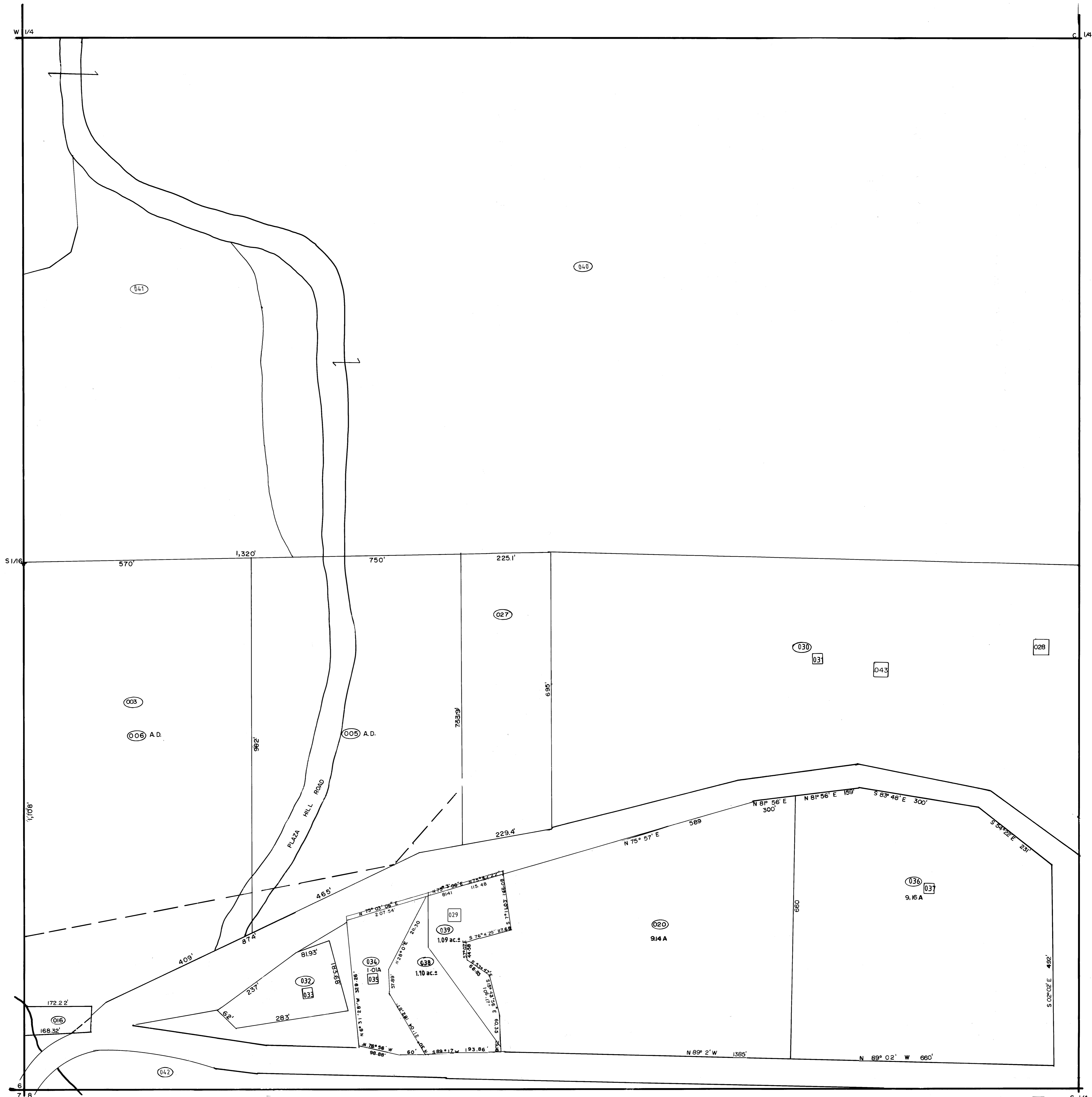
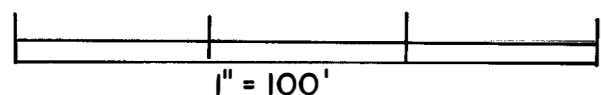
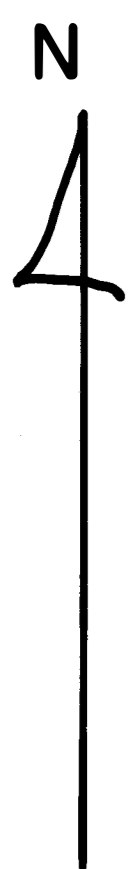


RIO GRANDE COUNTY

EB	5-3-78	ES	12-15-11
EB	3-17-88	MS	11-17-16
EB	1-13-82	MS	1-22-20
EB	2-28-83		
ED	1-1-84		
DM	2-28-82		
DM	1-3-86		
DM	1-11-87		
DM	3-25-86		
DA	8-21-87		
DA	5-1-82		
ES	2-2-84		
ES	12-17-87		

09					
21	19	17	15	13	11
23	25	27	29	31	33
49	47	45	43	41	39
51	53	55	57	59	61

6	5	4	3	2	1
7	8	9	10	11	12
18	17	16	15	14	13
19	20	21	22	23	24
30	29	28	27	26	25
31	32	33	34	35	36



THIS MAP FOR ASSESSMENT PURPOSES ONLY NOT INTENDED TO BE USED FOR LEGAL PURPOSES

33 -053
 THIS MAP FOR ASSESSMENT PURPOSES ONLY NOT INTENDED TO BE USED FOR LEGAL PURPOSES
SW⁴ T. 39N. R. 7E.

Last parcel number 042