

33071-01  
 Plaza Del Rio  
 Fr. NE 1/4 Section 7 Twn 39N. Rg 7E.  
 Dr. 11 Map 181

RIO GRANDE COUNTY

| DRAWN BY   | DATE   |         |
|------------|--------|---------|
| CHECKED BY | DATE   |         |
| REVISED    |        |         |
| Date       | By     | Remarks |
| 01/02/03   | L.G.C. | update  |
|            |        |         |
|            |        |         |
|            |        |         |
|            |        |         |
|            |        |         |
|            |        |         |
|            |        |         |
|            |        |         |

| R. 3 E  |    | R. 4 E |    | R. 5 E |    |
|---------|----|--------|----|--------|----|
| T. 37 N | 9  | 10     | 11 | 12     | 13 |
| 21      | 19 | 17     | 15 | 13     | 11 |
| 23      | 21 | 19     | 17 | 15     | 13 |
| 25      | 23 | 21     | 19 | 17     | 15 |
| 27      | 25 | 23     | 21 | 19     | 17 |
| 29      | 27 | 25     | 23 | 21     | 19 |
| 31      | 29 | 27     | 25 | 23     | 21 |
| 33      | 31 | 29     | 27 | 25     | 23 |
| 35      | 33 | 31     | 29 | 27     | 25 |
| 37      | 35 | 33     | 31 | 29     | 27 |
| 39      | 37 | 35     | 33 | 31     | 29 |
| 41      | 39 | 37     | 35 | 33     | 31 |
| 43      | 41 | 39     | 37 | 35     | 33 |
| 45      | 43 | 41     | 39 | 37     | 35 |
| 47      | 45 | 43     | 41 | 39     | 37 |
| 49      | 47 | 45     | 43 | 41     | 39 |
| 51      | 49 | 47     | 45 | 43     | 41 |
| 53      | 51 | 49     | 47 | 45     | 43 |
| 55      | 53 | 51     | 49 | 47     | 45 |
| 57      | 55 | 53     | 51 | 49     | 47 |
| 59      | 57 | 55     | 53 | 51     | 49 |
| 61      | 59 | 57     | 55 | 53     | 51 |
| 63      | 61 | 59     | 57 | 55     | 53 |

COUNTY INDEX

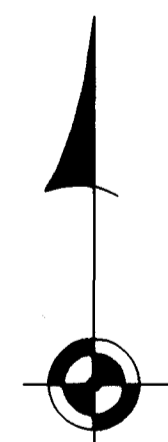
| R. 6 E  |    | R. 7 E |    | R. 8 E |    |
|---------|----|--------|----|--------|----|
| T. 37 N | 14 | 15     | 16 | 17     | 18 |
| 6       | 5  | 4      | 3  | 2      | 1  |
| 7       | 6  | 5      | 4  | 3      | 2  |
| 8       | 7  | 6      | 5  | 4      | 3  |
| 9       | 8  | 7      | 6  | 5      | 4  |
| 10      | 9  | 8      | 7  | 6      | 5  |
| 11      | 10 | 9      | 8  | 7      | 6  |
| 12      | 11 | 10     | 9  | 8      | 7  |
| 13      | 12 | 11     | 10 | 9      | 8  |
| 14      | 13 | 12     | 11 | 10     | 9  |
| 15      | 14 | 13     | 12 | 11     | 10 |
| 16      | 15 | 14     | 13 | 12     | 11 |
| 17      | 16 | 15     | 14 | 13     | 12 |
| 18      | 17 | 16     | 15 | 14     | 13 |
| 19      | 18 | 17     | 16 | 15     | 14 |
| 20      | 19 | 18     | 17 | 16     | 15 |
| 21      | 20 | 19     | 18 | 17     | 16 |
| 22      | 21 | 20     | 19 | 18     | 17 |
| 23      | 22 | 21     | 20 | 19     | 18 |
| 24      | 23 | 22     | 21 | 20     | 19 |
| 25      | 24 | 23     | 22 | 21     | 20 |
| 26      | 25 | 24     | 23 | 22     | 21 |
| 27      | 26 | 25     | 24 | 23     | 22 |
| 28      | 27 | 26     | 25 | 24     | 23 |
| 29      | 28 | 27     | 26 | 25     | 24 |
| 30      | 29 | 28     | 27 | 26     | 25 |
| 31      | 30 | 29     | 28 | 27     | 26 |
| 32      | 31 | 30     | 29 | 28     | 27 |
| 33      | 32 | 31     | 30 | 29     | 28 |
| 34      | 33 | 32     | 31 | 30     | 29 |
| 35      | 34 | 33     | 32 | 31     | 30 |
| 36      | 35 | 34     | 33 | 32     | 31 |

TOWNSHIP INDEX

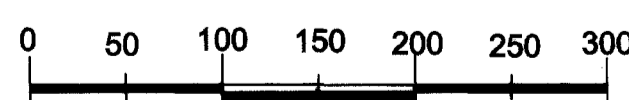
NOTICE

THIS MAP IS FOR ASSESSMENT PURPOSES ONLY. IT IS NOT NECESSARILY ACCURATE BY SURVEYING STANDARDS. DO NOT USE FOR LEGAL CONVEYANCE.

N



BEARINGS ARE BASED ON THE EAST LINE OF THE NE 1/4 BEING N 00°06'02" E MONUMENTED AS SHOWN BY THIS PLAT.

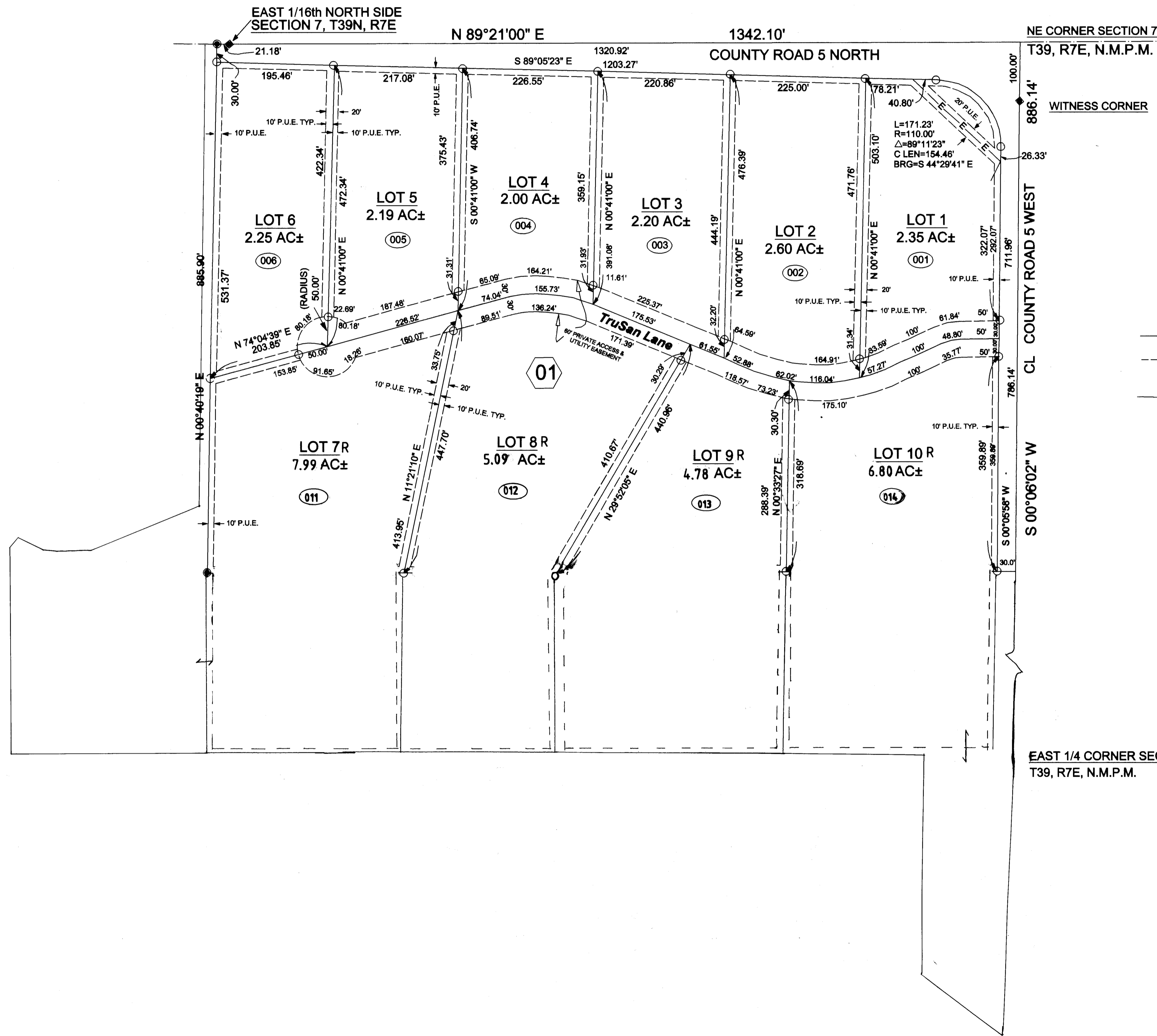
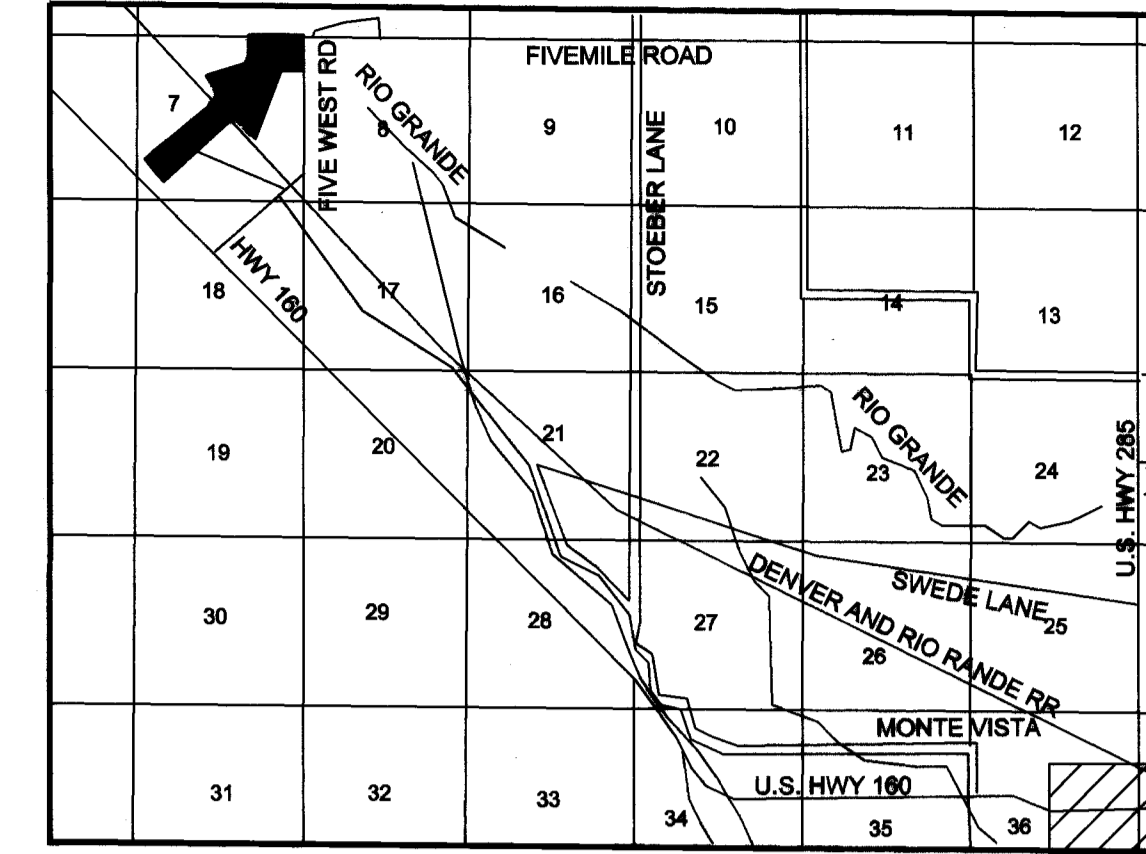


SCALE 1" = 100'

Original Drawing by:  
 Davis Engineering Service, Inc.  
 576 Spruce Street  
 Del Norte, Colorado 81132

Update By:  
 San Luis Valley GIS/GPS Authority  
 P.O. Box 300  
 Alamosa, Colorado 81101  
 719-589-6099

LOCATION INSET



- LEGEND**
- ◆ Set 30" No. 6 Rebar With 3 1/4" Aluminum Cap
  - Set 24" No. 4 Rebar With Yellow Plastic Cap
  - Recovered Iron Bar with PLS 5442
  - Property Boundary
  - - - Public Utility Easement (P.U.E.) and/or Road, as Described
  - - - Section or Quarter Section Line

33071-01  
 Plaza Del Rio & Riverbend Ranch Replat  
 Lots 1 thru 6      Lots 7R Thru 10R  
 Fr. NE 1/4 Section 7 Twn 39N. Rg 7E.  
 Dr. 11 Map 181