

33 241
NE 4 Section 24
T. 39 N., R. 7 E.

RIO GRANDE COUNTY

DRAWN BY AOD DATE 1972-3
CHECKED BY CJM DATE 1972-3

REVISED

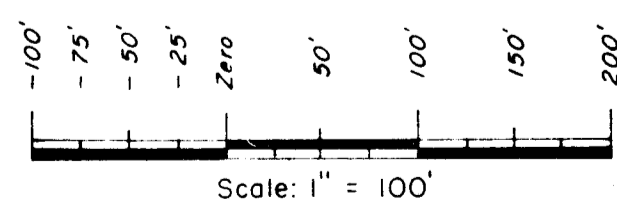
Date	By	Remarks
4-24-74	SL	1-11-94 DM
7-7-75	SL	2-8-96 DM
9-15-77	EB	2-21-97 DM
8-1-78	EB	2-10-98
3-24-80	EB	0-15-99 DA
1-21-81	EB	02-25-30 DA
1-13-82	EB	09-26-87
2-9-83	EB	03-04-82 DA
12-26-84	B. D.	12-18-04 ES
1-14-87	EB	12-12-12 ES
8-7-90	DM	
12-21-91	DM	
12-28-93	DM	

COUNTY INDEX

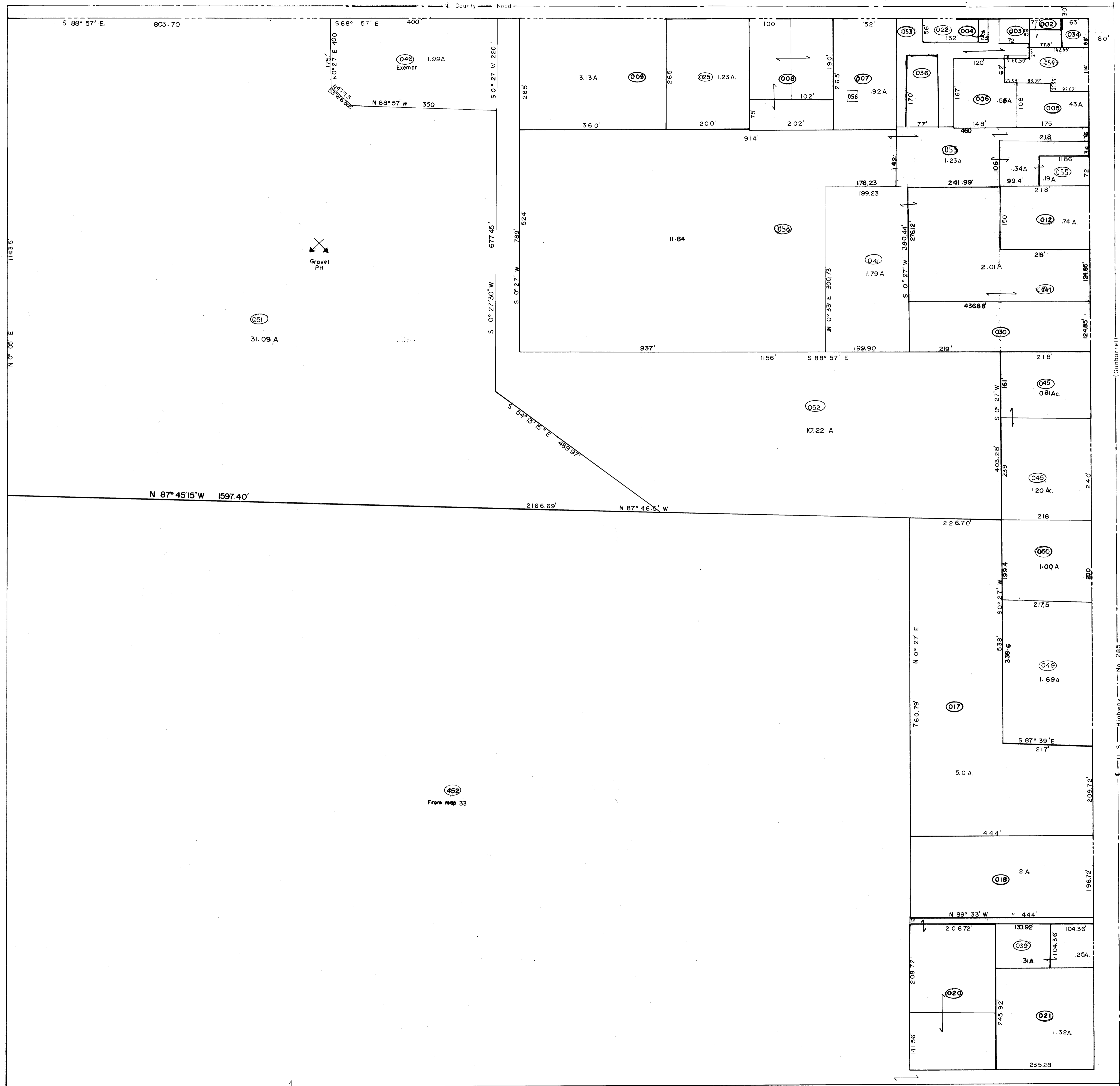
09	10	11
21	19	17
23	27	29
49	47	43
51	53	55

TOWNSHIP INDEX

6	33C	4	3	2	1
7	07C	9	10	11	12
16	17	18	15	14	13
19	20	21	22	23	24
07B	29	28	27	26	25
31	32	33	34	35	36



DAVID ENGINEERING, INC., P. O. BOX 67 - 576 SHELTON, DEL. NORTE, COLORADO 81132



From map 33-244-00-452

THIS MAP FOR ASSESSMENT PURPOSES ONLY NOT INTENDED TO BE USED FOR LEGAL PURPOSES

33 241

NE 4 Section 24
T. 39 N., R. 7 E.

Last parcel number used 055