

33 254
 S² NE⁴ & SE⁴ Sec 25
 T. 39 N., R. 7 E.

RIO GRANDE COUNTY

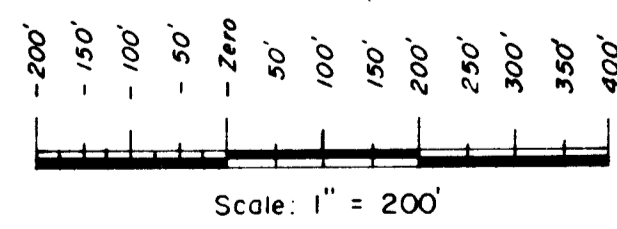
DRAWN BY A.O.D. DATE 1972-3		
CHECKED BY C.J.M. DATE 1972-3		
REVISED		
Date	By	Remarks
6-24-77	JL	2-97-46 ES
8-13-76	EB	12-17-77 ES
9-15-77	EB	
8-11-78	EB	
3-24-80	EB	
1-13-82	EB	
2-9-84	EB	
3-8-88	EB	
10-31-91	DM	
11-11-94	DM	
11-1-94	DM	
2-8-96	DM	
2-25-20	DA	

R. 3 E.		R. 4 E.		R. 5 E.		R. 6 E.	
09	19	17	15	13	11		
21	27	29	31	33	35		
23	25	27	29	31	33		
49	47	45	43	41	39		
51	53	55	57	59	61		

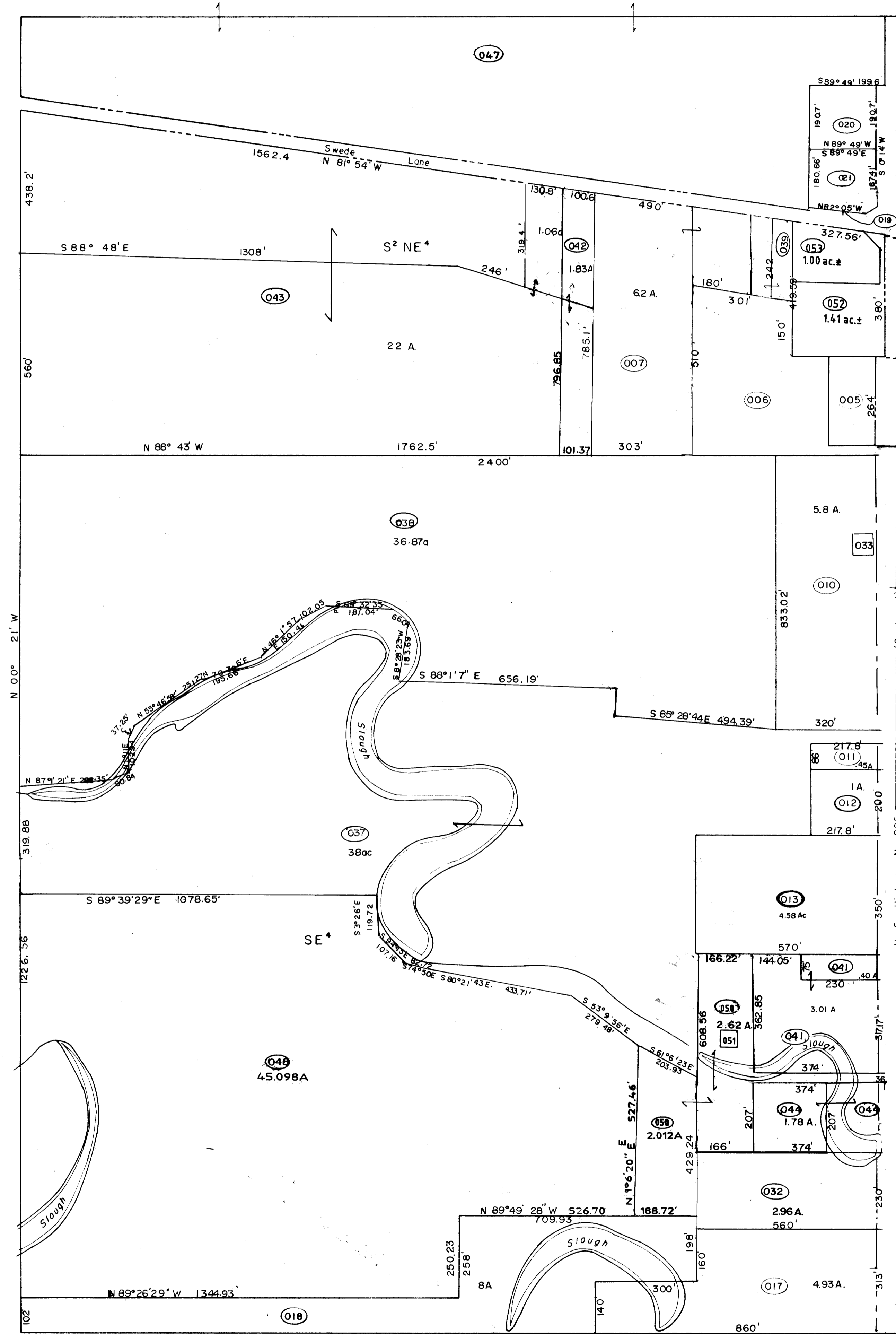
COUNTY INDEX

T. 38 N.		T. 39 N.		T. 40 N.	
6	7	8	9	10	11
12	13	14	15	16	17
18	19	20	21	22	23
24	25	26	27	28	29
30	31	32	33	34	35

TOWNSHIP INDEX



DAVIS ENGINEERING SERVICE, INC.
 P. O. BOX 67 - 574 SPRUCE ST.
 DEL NORTE, COLORADO 81132



33 254

S² NE⁴ & SE⁴ Sec. 25
 T. 39 N., R. 7 E.

THIS MAP FOR ASSESSMENT
 PURPOSES ONLY NOT INTENDED
 TO BE USED FOR LEGAL PURPOSES