

33 080  
NE 1/4 NE 1/4 Section 8  
T. 39 N., R. 7 E.

RIO GRANDE COUNTY

DRAWN BY A.O.D. DATE 1972-3  
CHECKED BY C.J.M. DATE 1972-3

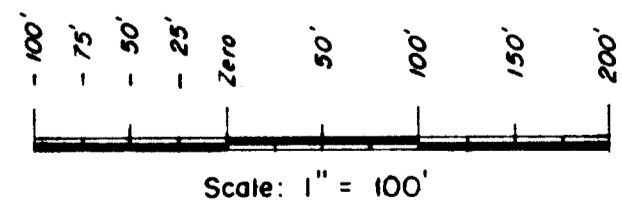
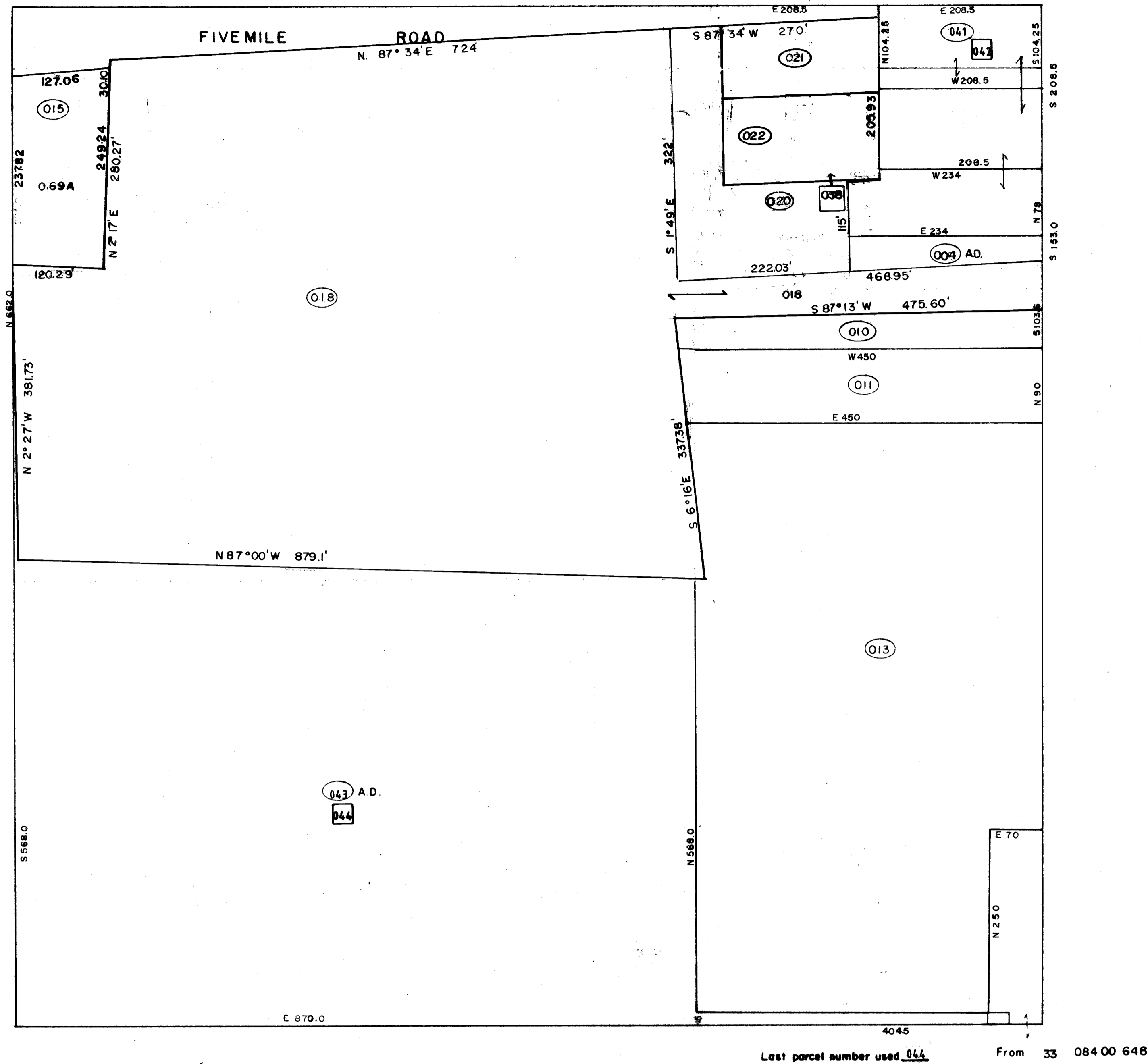
REVISED		
Date	By	Remarks
8-1-77	SL	91-84-11 ES
7-7-77	SL	
9-17-75	EB	
8-1-75	EB	
5-17-80	EB	
1-21-81	EB	
12-20-84	BD	
1-6-86	ES	
1-11-94	DM	
02-20-97	DM	
03-07-02	DA	
12/18/06	ES	
12-17-07	ES	

R 3 E			R 8 E		
21	19	17	15	13	11
23	21	19	17	15	13
49	47	45	43	41	39
51	49	47	45	43	41
T 37 N			T 38 N		

COUNTY INDEX

6	33	4	3	2	1
7	34	5	4	3	2
8	35	6	5	4	3
14	17	10	9	8	7
19	20	21	22	23	24
30	29	28	27	26	25
31	32	33	34	35	36

TOWNSHIP INDEX



DAVIS ENGINEERING SERVICE, INC.  
P. O. BOX 67 - 576 SPRUCE ST.  
DEL NORTE, COLORADO 81138

THIS MAP FOR ASSESSMENT PURPOSES ONLY NOT INTENDED TO BE USED FOR LEGAL PURPOSES

33 080  
NE 1/4 NE 1/4 Section 8  
T. 39 N., R. 7 E.